

Module Interfaces (Caller and Called are IMS Subscribers)			
Calling UE	IMS Network	Called UE	EventStudio System Designer 4.0

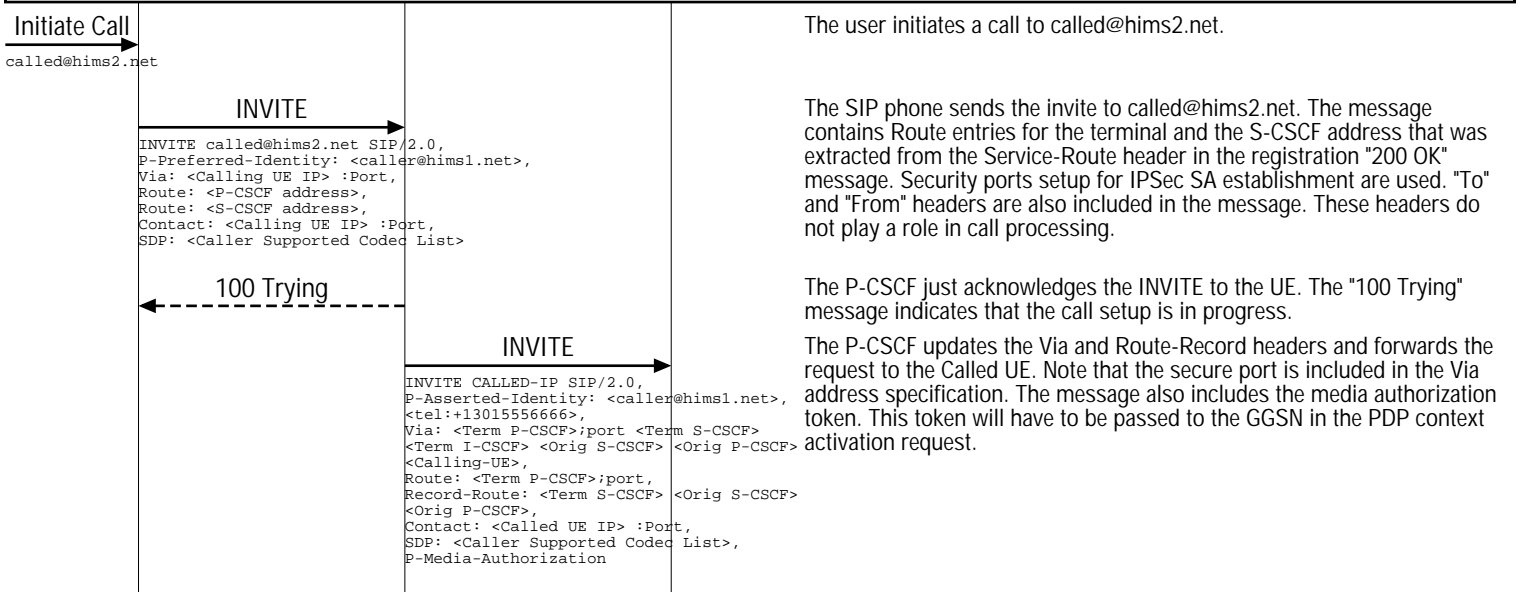
This sequence diagram describes the call setup of a call from one IMS subscriber to another IMS subscriber. The calling subscriber is roaming in another IMS supporting network. The called subscriber is in the home IMS network.

The call flow focuses on the IMS routing of SIP dialog. The major steps in the call flow are:

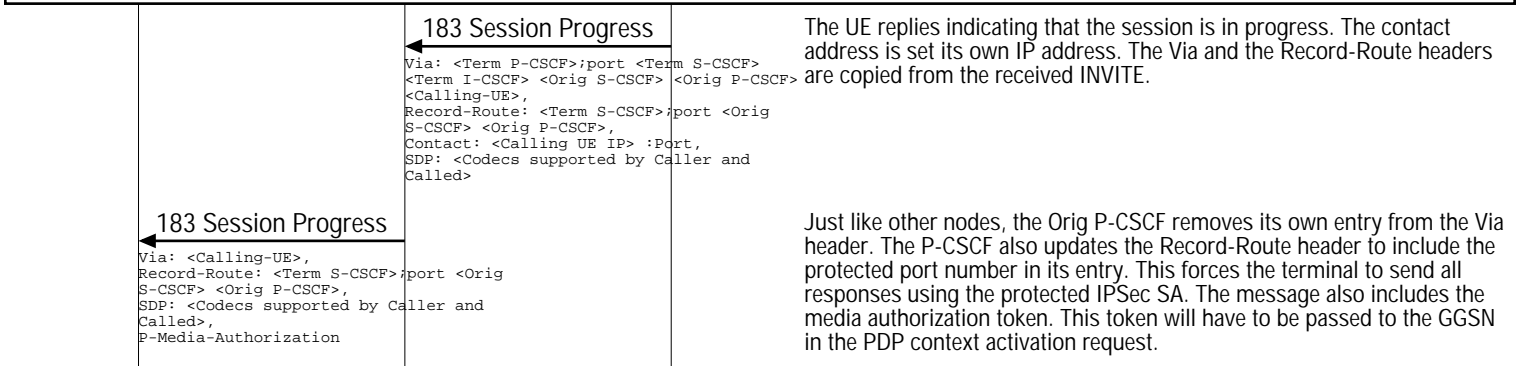
- (1) IMS Routing of Initial SIP INVITE.
- (2) IMS Routing of First Response to the SIP Invite.
- (3) PDP Context Activation and Audio/Video Path Setup.

This sequence diagram was generated with EventStudio System Designer 4.0 (<http://www.EventHelix.com/EventStudio>). Copyright © 2007 EventHelix.com Inc. All Rights Reserved.

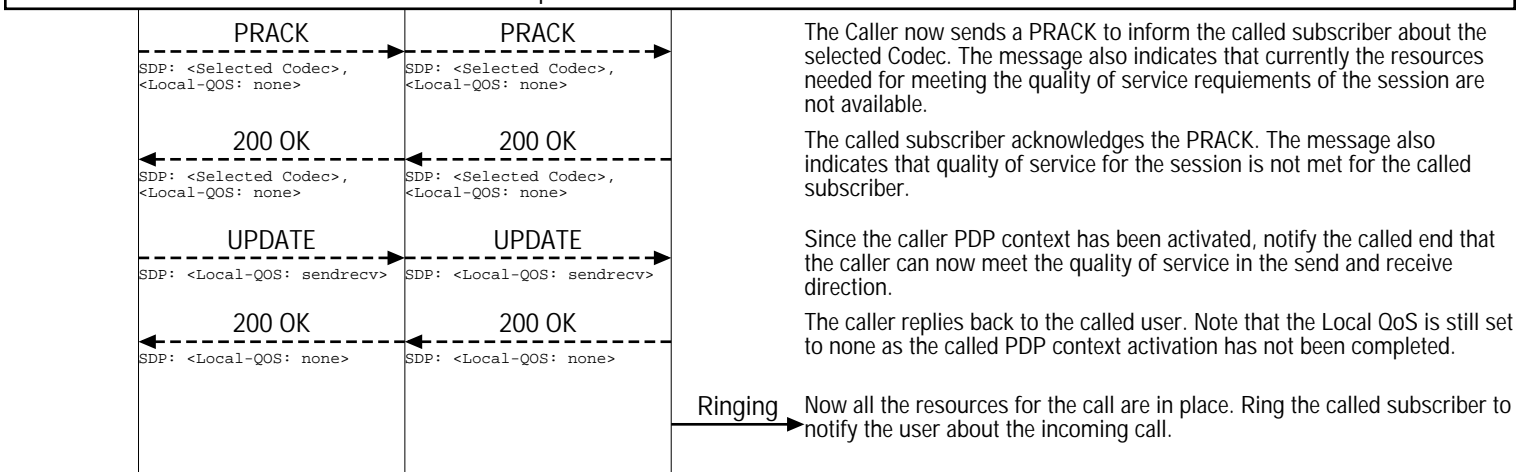
### IMS Routing of Initial SIP INVITE



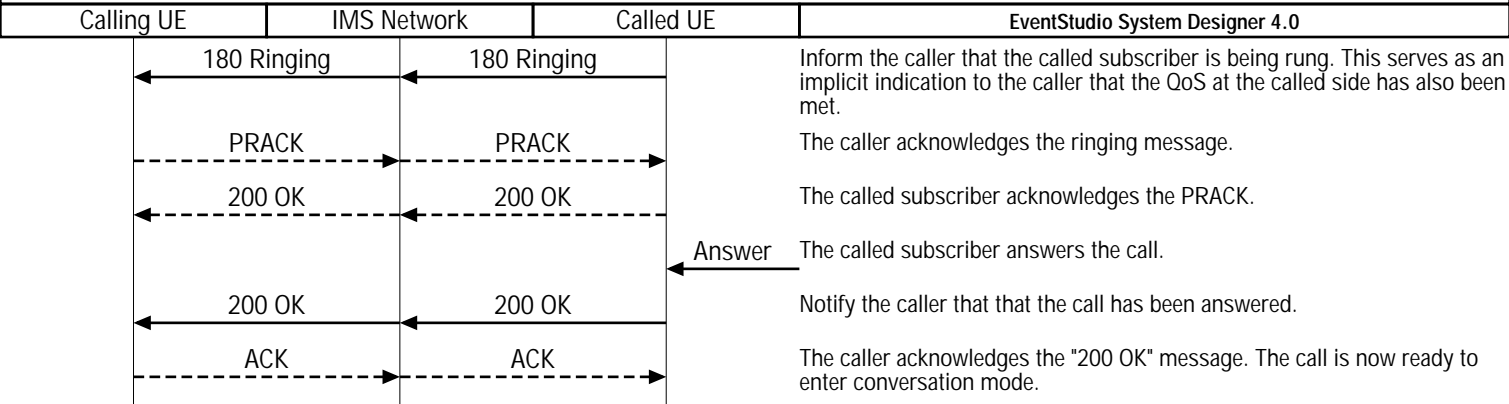
### IMS Routing of First Response to the SIP Invite



### PDP Context Activation and Audio/Video Path Setup



**Module Interfaces (Caller and Called are IMS Subscribers)**



Conversation on a direct RTP/RTCP connection between the caller and called subscriber SIP phones.

