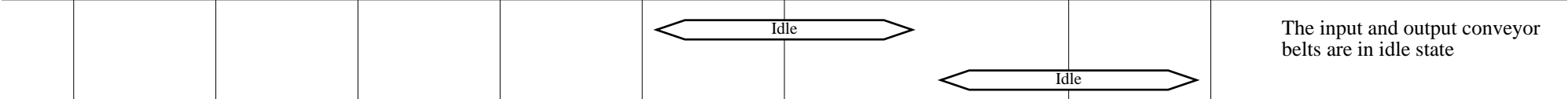


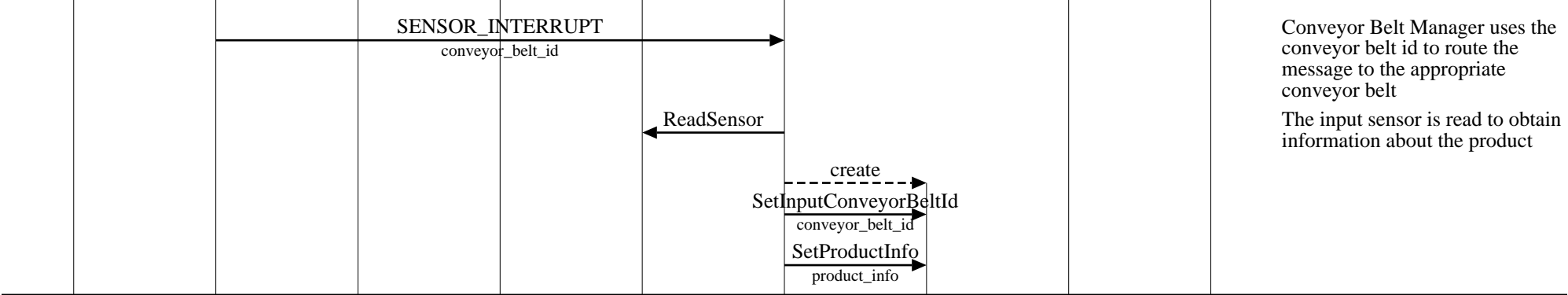
Conveyor_belt Interfaces (Package Routed Successfully)									
helix router									EventHelix.com/EventStudio 2.0
core				input			output		05-Jul-03 11:23 (Page 1)
interrupt handler	conveyor belt manager	operator	routing table	input magnetic sensor	input conveyor belt	package	output conveyor belt	output magnetic sensor	

Copyright © 2000-2003 EventHelix.com Inc. All Rights Reserved.



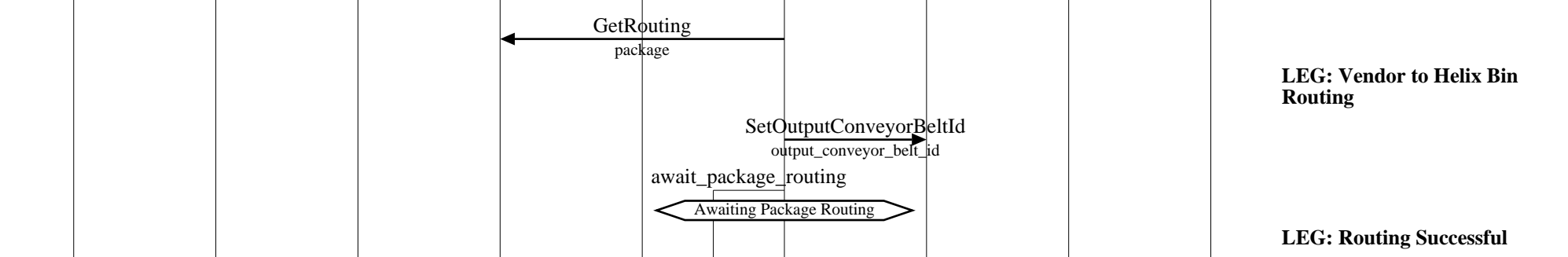
The input and output conveyor belts are in idle state

A new package has been received at an input conveyor belt.



Conveyor Belt Manager uses the conveyor belt id to route the message to the appropriate conveyor belt  
 The input sensor is read to obtain information about the product

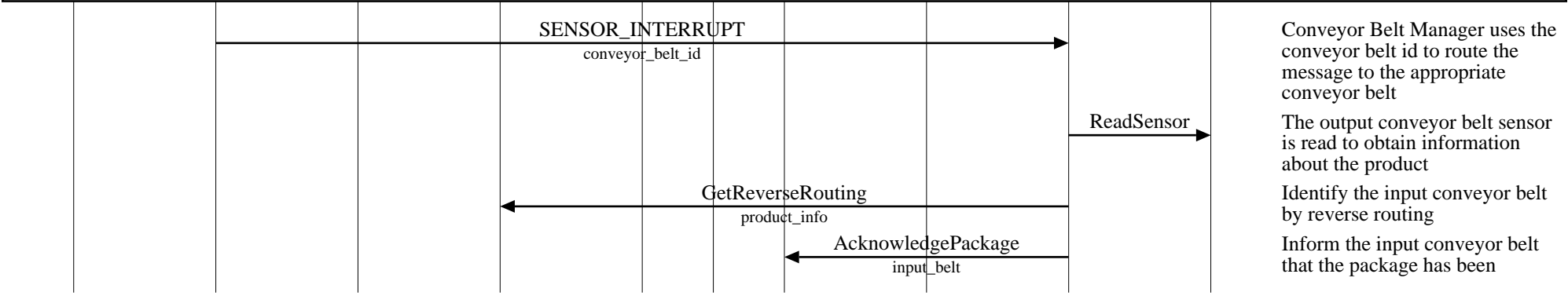
Routing the received package



**LEG: Vendor to Helix Bin Routing**

**LEG: Routing Successful**

Package reaches the destination conveyor belt



Conveyor Belt Manager uses the conveyor belt id to route the message to the appropriate conveyor belt  
 The output conveyor belt sensor is read to obtain information about the product  
 Identify the input conveyor belt by reverse routing  
 Inform the input conveyor belt that the package has been

Conveyor\_belt Interfaces (Package Routed Successfully)

helix router

EventHelix.com/EventStudio 2.0

core

input

output

interrupt handler

conveyor belt manager

operator

routing table

input magnetic sensor

input conveyor belt

package

output conveyor belt

output magnetic sensor

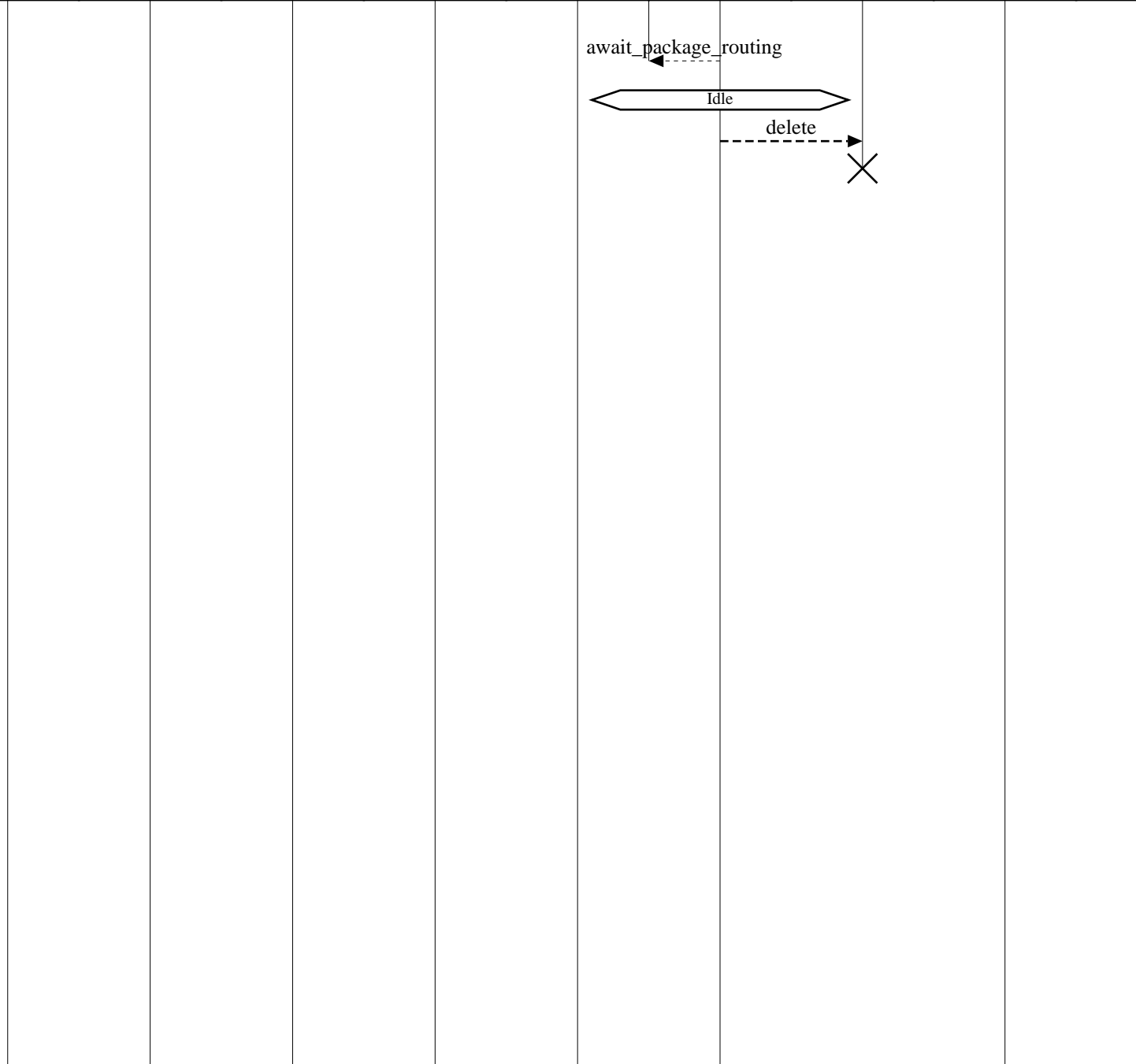
05-Jul-03 11:23 (Page 2)

await\_package\_routing

Idle

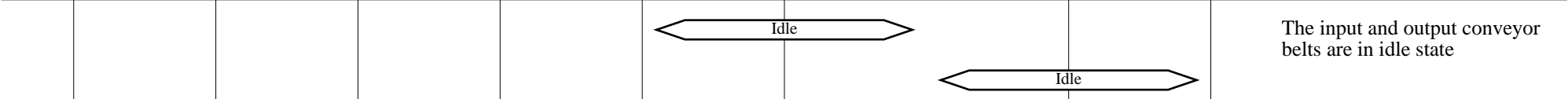
delete

received  
Package has been correctly  
routed, so stop the timer  
Back to idle state



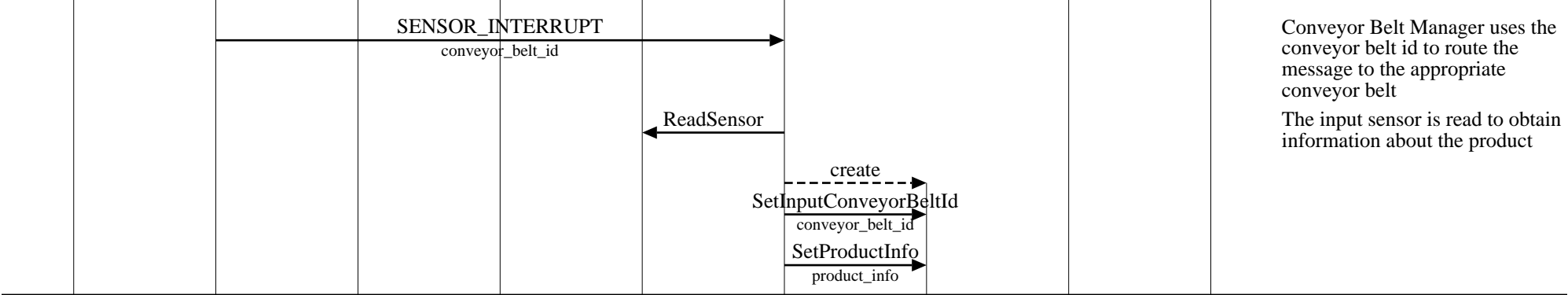
Conveyor_belt Interfaces (Conveyor Belt Jammed)									
helix router									EventHelix.com/EventStudio 2.0
core			input			output			05-Jul-03 11:23 (Page 3)
interrupt handler	conveyor belt manager	operator	routing table	input magnetic sensor	input conveyor belt	package	output conveyor belt	output magnetic sensor	

Copyright © 2000-2003 EventHelix.com Inc. All Rights Reserved.



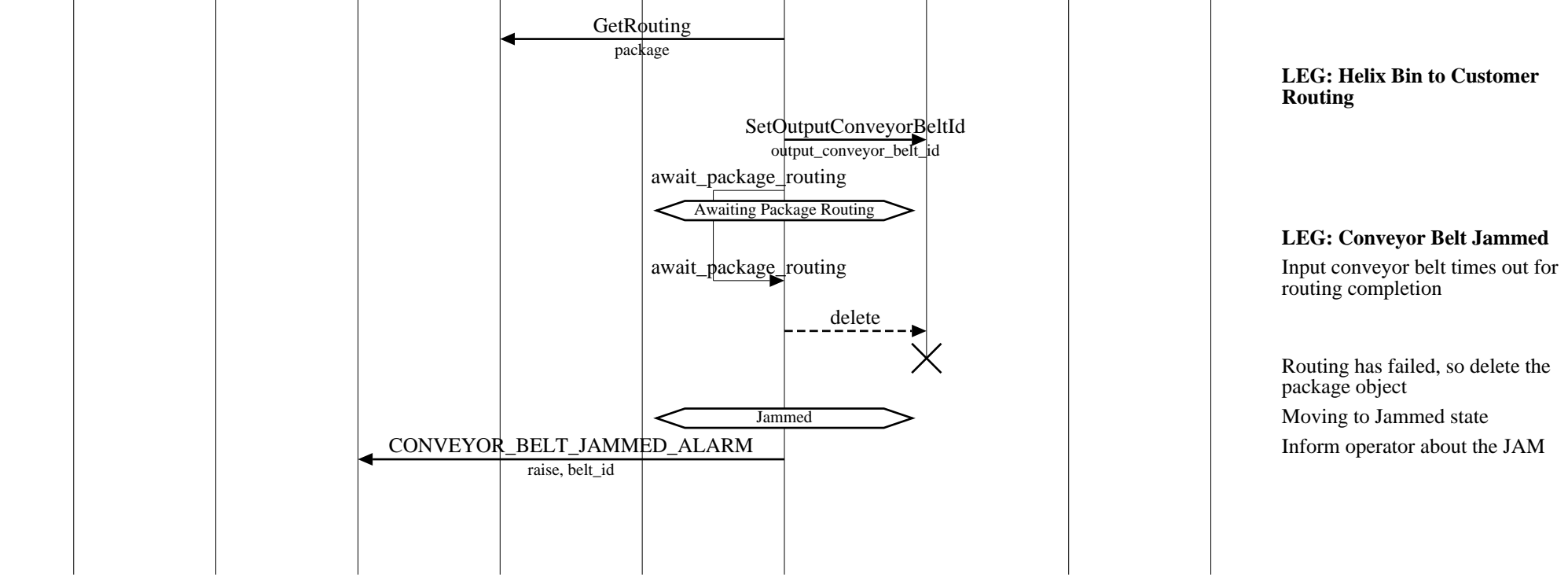
The input and output conveyor belts are in idle state

A new package has been received at an input conveyor belt.



Conveyor Belt Manager uses the conveyor belt id to route the message to the appropriate conveyor belt  
The input sensor is read to obtain information about the product

Routing the received package



**LEG: Helix Bin to Customer Routing**

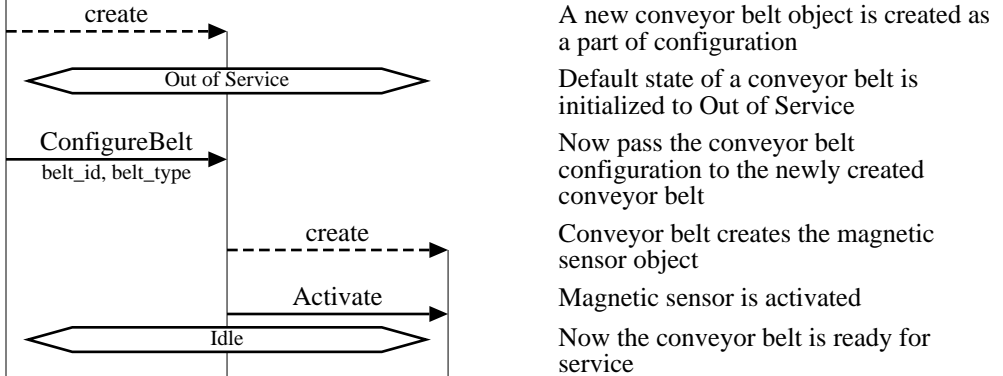
**LEG: Conveyor Belt Jammed**  
Input conveyor belt times out for routing completion

Routing has failed, so delete the package object  
Moving to Jammed state  
Inform operator about the JAM

Conveyor_belt Interfaces (Creating and Deleting a Conveyor Belt)						
helix router						EventHelix.com/EventStudio 2.0
core			belt			
interrupt handler	router	operator	routing table	conveyor belt manager	conveyor belt	magnetic sensor
05-Jul-03 11:23 (Page 4)						

Copyright © 2000-2003 EventHelix.com Inc. All Rights Reserved.

Creating a Conveyor Belt



Routing Table Update for the New Conveyor Belt

Deleting a Conveyor Belt

