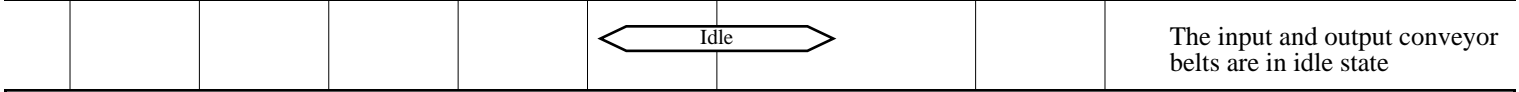
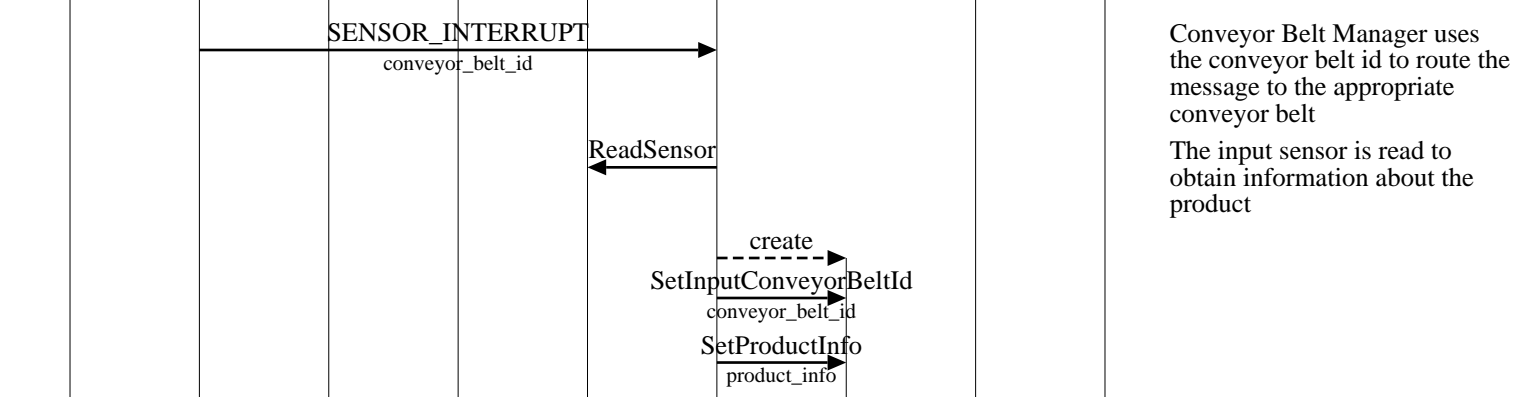


Input_conveyor_belt Interfaces (Package Routed Successfully)									
helix router									EventHelix.com/EventStudio 2.0
core				input			output		
interrupt handler	conveyor belt manager	operator	routing table	input magnetic sensor	input conveyor belt	package	output conveyor belt	output magnetic sensor	05-Jul-03 11:23 (Page 1)

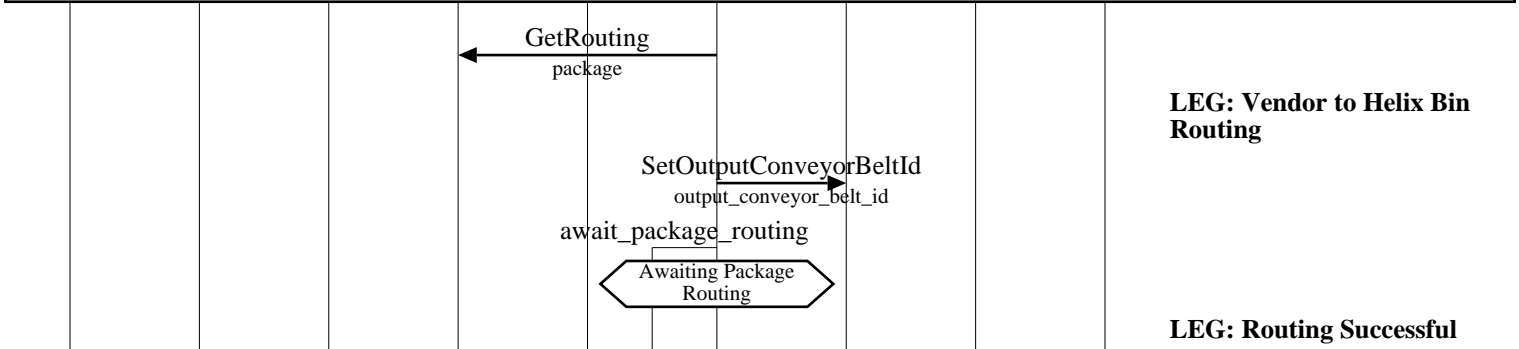
Copyright © 2000-2003 EventHelix.com Inc. All Rights Reserved.



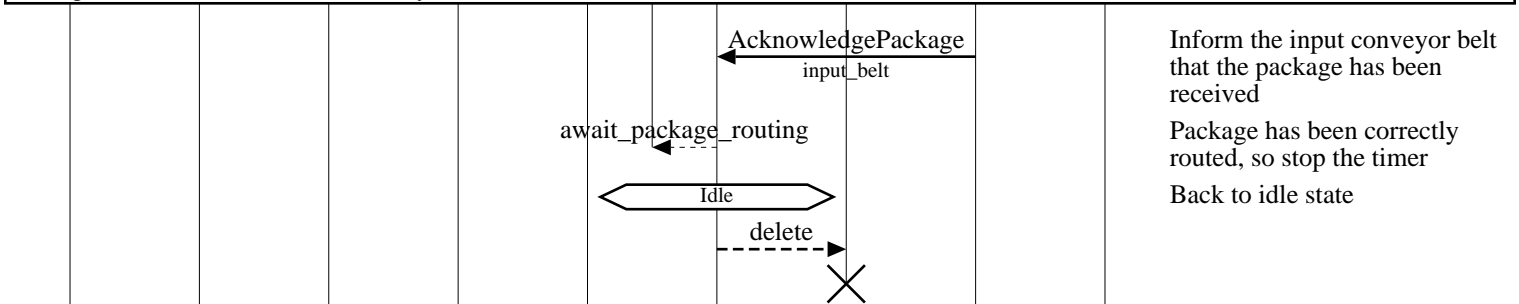
A new package has been received at an input conveyor belt.



Routing the received package

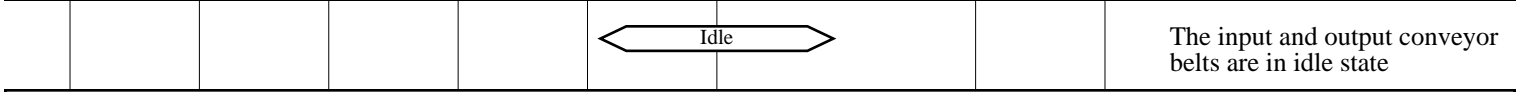


Package reaches the destination conveyor belt

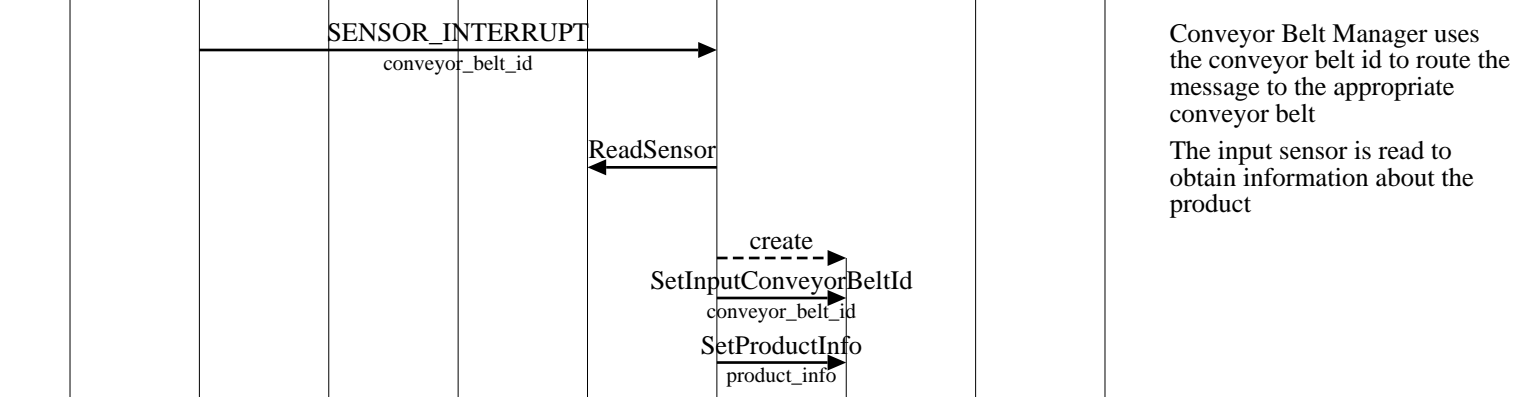


Input_conveyor_belt Interfaces (Conveyor Belt Jammed)									
helix router								EventHelix.com/EventStudio 2.0	
core				input			output		
interrupt handler	conveyor belt manager	operator	routing table	input magnetic sensor	input conveyor belt	package	output conveyor belt	output magnetic sensor	05-Jul-03 11:23 (Page 2)

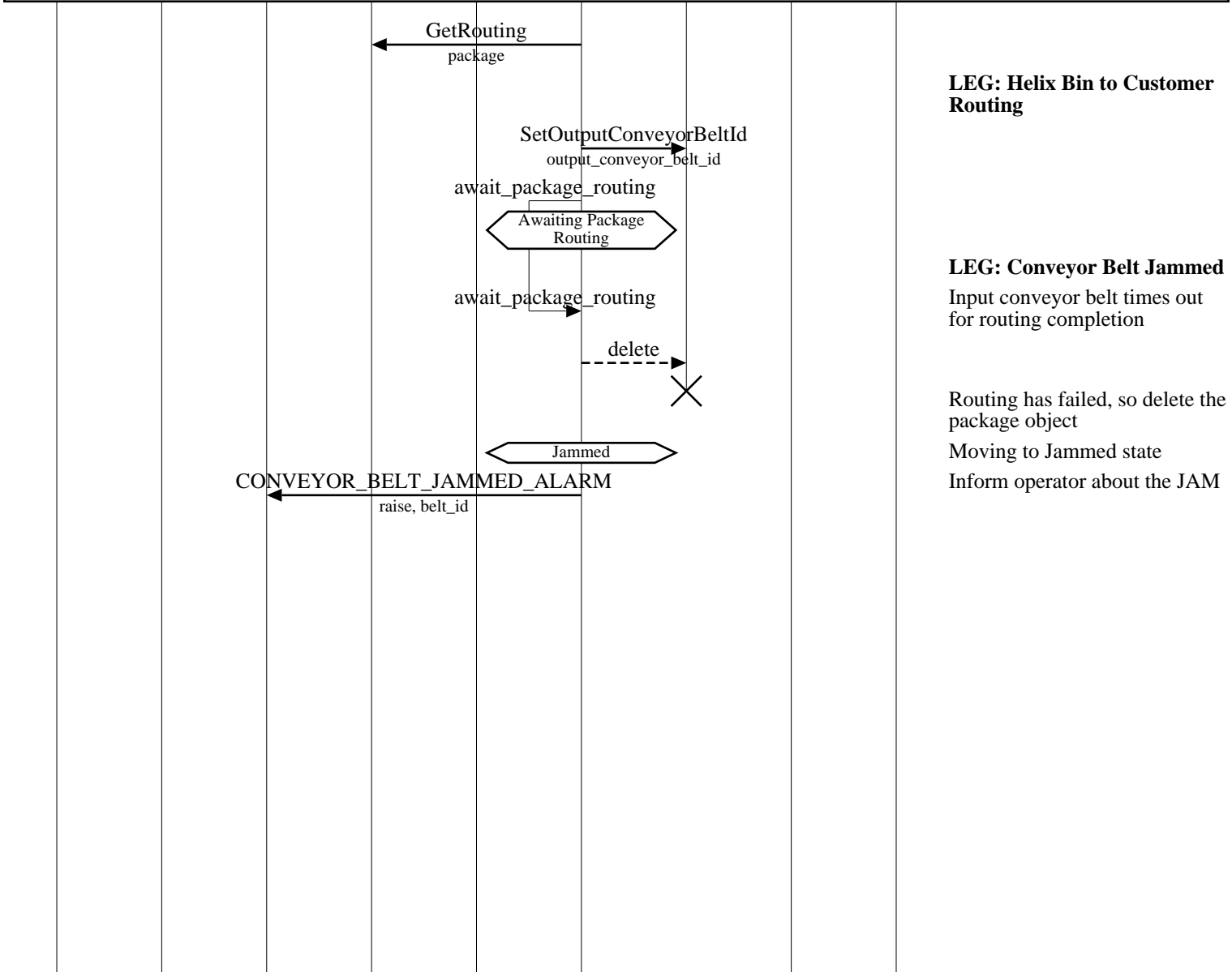
Copyright © 2000-2003 EventHelix.com Inc. All Rights Reserved.



A new package has been received at an input conveyor belt.



Routing the received package



Input_conveyor_belt Interfaces (Creating and Deleting a Conveyor Belt)

helix router						EventHelix.com/EventStudio 2.0	
core				belt			05-Jul-03 11:23 (Page 3)
interrupt handler	router	operator	routing table	conveyor belt manager	conveyor belt	magnetic sensor	

Copyright © 2000-2003 EventHelix.com Inc. All Rights Reserved.

Creating a Conveyor Belt

Routing Table Update for the New Conveyor Belt

Deleting a Conveyor Belt

--	--	--	--	--	--	--