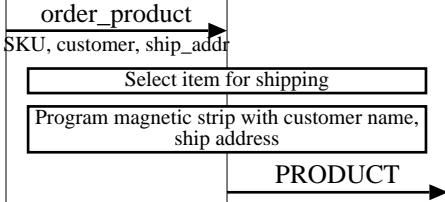


Bin Interfaces (Customer Purchases a Product)							
internet				helix store			EventHelix.com/EventStudio 2.0
customer	manufacturer	courier	payment service	helix server	helix bin	helix router	05-Jul-03 11:23 (Page 1)
customer	manufacturer	courier	payment service	server	bin	router	

Copyright © 2000-2003 EventHelix.com Inc. All Rights Reserved.



Helix Bin uses its routing tables to route the item based on the ship address and courier service. The item is routed to the nearest router that can deliver the product to the courier service

Product package is shipped to the final destination

Bin Interfaces (HelixStore Replenishes Inventory)							
internet				helix store			EventHelix.com/EventStudio 2.0
customer	manufacturer	courier	payment service	helix server	helix bin	helix router	05-Jul-03 11:23 (Page 2)
customer	order service	courier	payment service	server	bin	router	

Copyright © 2000-2003 EventHelix.com Inc. All Rights Reserved.

Check if inventory has fallen below a pre specified threshold

inventory\_fallen  
SKU

Helix Bin informs server about the fall in inventory

Ordered items reach the final destination

PRODUCTS

Collect all the items corresponding to a the specified order number

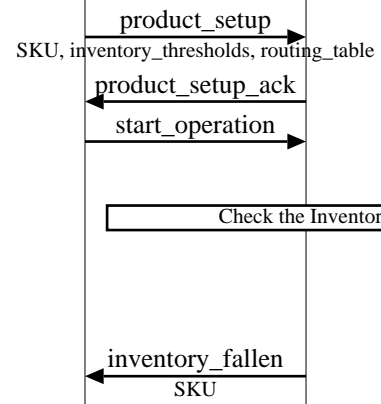
items\_received  
order\_number, SKU, quantity

Bin informs Helix Server that it has received items for a specified order number. The SKU and the quantity received are also specified

Bin Interfaces (Adding a New Product to HelixStore)							
internet				helix store			EventHelix.com/EventStudio 2.0
customer	manufacturer	courier	payment service	helix server	helix bin	helix router	05-Jul-03 11:23 (Page 3)
customer	manufacturer	courier	payment service	server	bin	router	

Management decides to add a new product to HelixStore. Management also decides if the product will be classified as fast moving or slow moving.  
 Copyright © 2000-2003 EventHelix.com Inc. All Rights Reserved.

Connect Helix Bin and Helix Router to the HelixStore network



The new HelixBin is updated with all the routing tables

Helix Server has completed setup for the new product, so it asks the new Helix Bin to start operation

The first action taken by the Bin is to check against the inventory threshold. Since the Bin is currently empty, it will automatically place an order using the inventory\_fallen message

First order will be placed for the new products

HelixStore is now ready to receive orders for the new product

The standard inventory replenishment procedure will fill up the Bin as soon as the manufacturers ship products