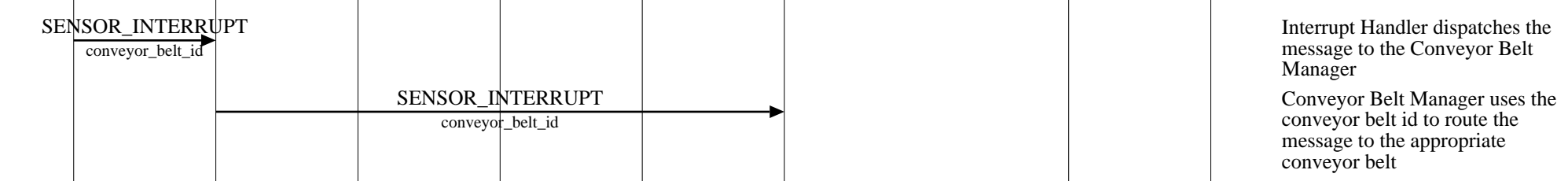


Conveyor_belt_manager Interfaces (Package Routed Successfully)									
helix router									EventHelix.com/EventStudio 2.0
core				input			output		
interrupt handler	conveyor belt manager	operator	routing table	input magnetic sensor	input conveyor belt	package	output conveyor belt	output magnetic sensor	05-Jul-03 11:23 (Page 1)

Copyright © 2000-2003 EventHelix.com Inc. All Rights Reserved.

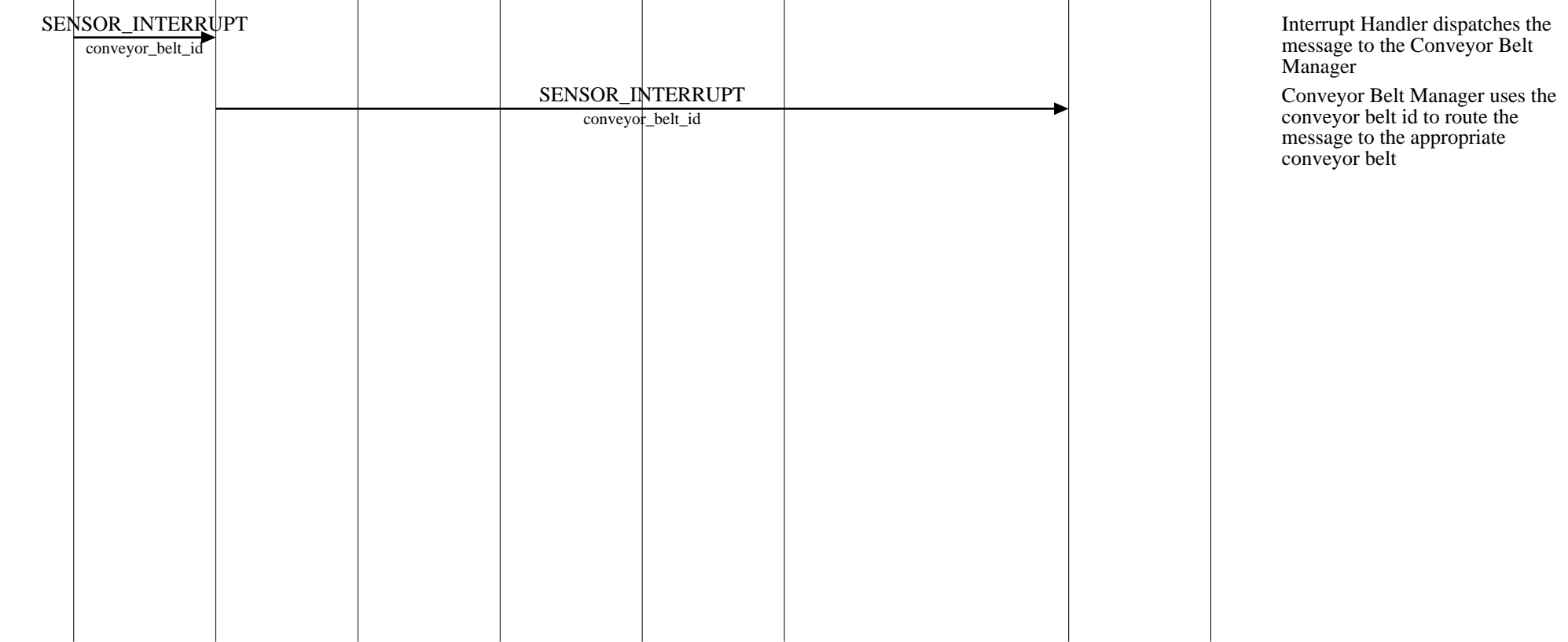
A new package has been received at an input conveyor belt.



Routing the received package



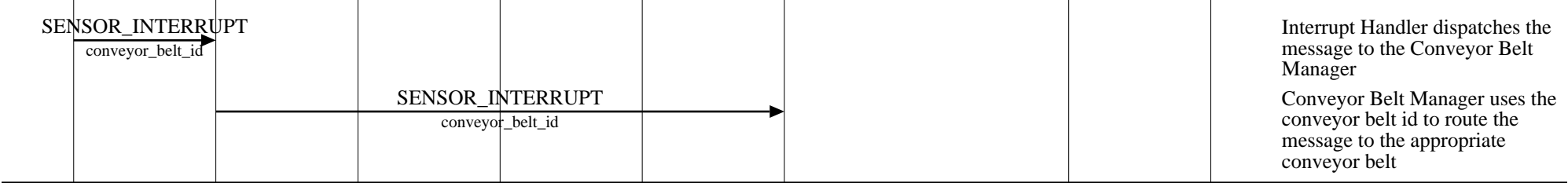
Package reaches the destination conveyor belt



Conveyor_belt_manager Interfaces (Conveyor Belt Jammed)									
helix router									EventHelix.com/EventStudio 2.0
core				input			output		
interrupt handler	conveyor belt manager	operator	routing table	input magnetic sensor	input conveyor belt	package	output conveyor belt	output magnetic sensor	05-Jul-03 11:23 (Page 2)

Copyright © 2000-2003 EventHelix.com Inc. All Rights Reserved.

A new package has been received at an input conveyor belt.



Interrupt Handler dispatches the message to the Conveyor Belt Manager
 Conveyor Belt Manager uses the conveyor belt id to route the message to the appropriate conveyor belt

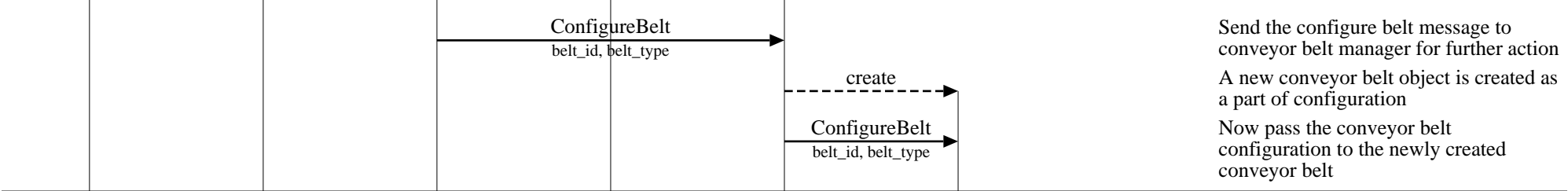
Routing the received package

LEG: Helix Bin to Customer Routing
LEG: Conveyor Belt Jammed

Conveyor_belt_manager Interfaces (Creating and Deleting a Conveyor Belt)						
helix router						EventHelix.com/EventStudio 2.0
core			belt			
interrupt handler	router	operator	routing table	conveyor belt manager	conveyor belt	magnetic sensor
05-Jul-03 11:23 (Page 3)						

Copyright © 2000-2003 EventHelix.com Inc. All Rights Reserved.

Creating a Conveyor Belt



Routing Table Update for the New Conveyor Belt

Deleting a Conveyor Belt

