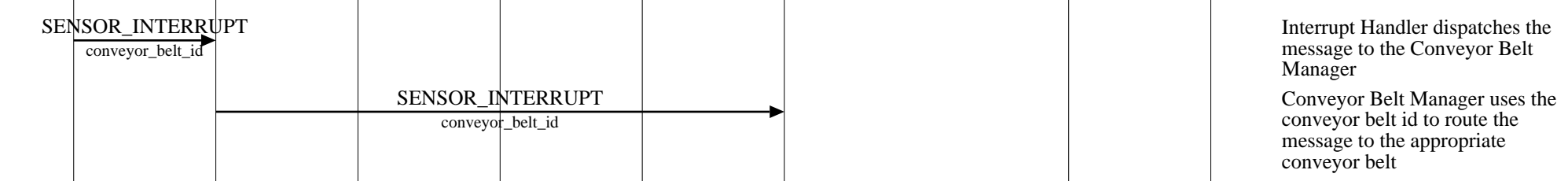


| SENSOR Interfaces (Package Routed Successfully) | | | | | | | | | |
|---|-----------------------|----------|---------------|-----------------------|---------------------|---------|----------------------|------------------------|--------------------------------|
| helix router | | | | | | | | | EventHelix.com/EventStudio 2.0 |
| core | | | | input | | | output | | |
| interrupt handler | conveyor belt manager | operator | routing table | input magnetic sensor | input conveyor belt | package | output conveyor belt | output magnetic sensor | 05-Jul-03 11:23 (Page 1) |

Copyright © 2000-2003 EventHelix.com Inc. All Rights Reserved.

A new package has been received at an input conveyor belt.



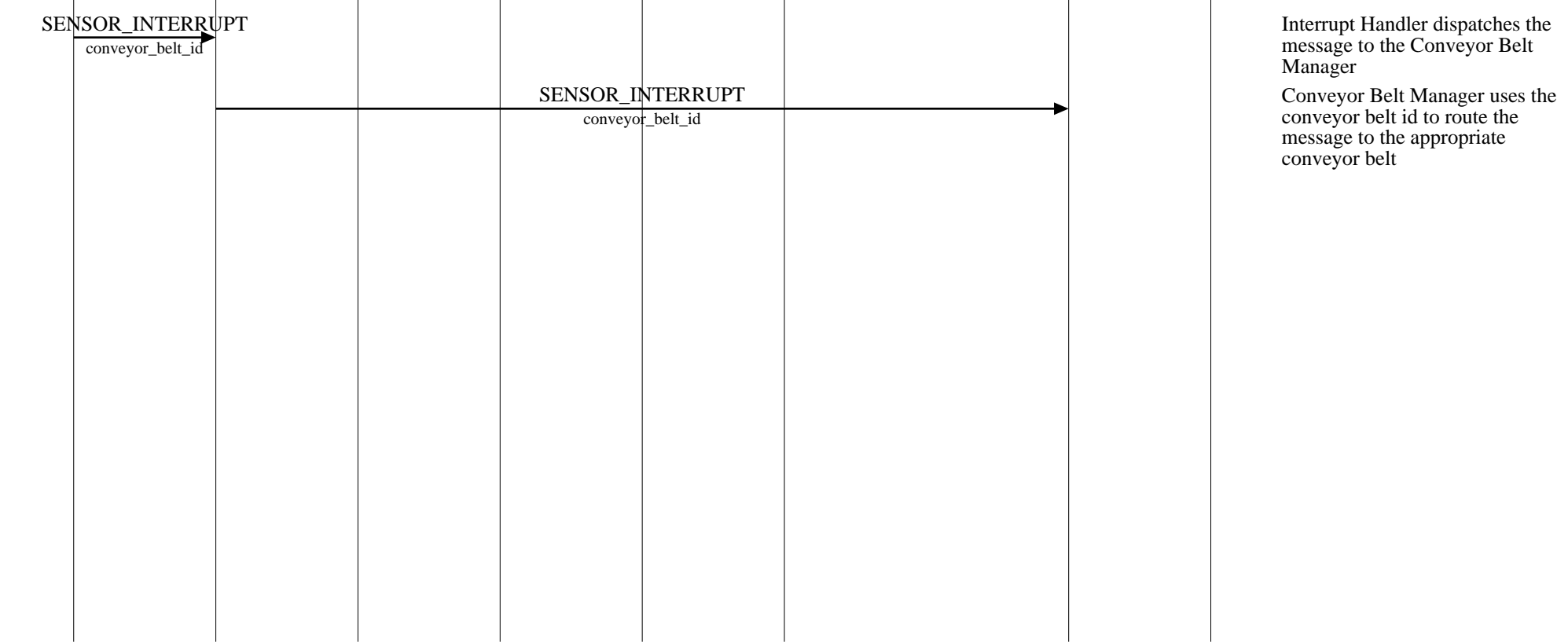
Interrupt Handler dispatches the message to the Conveyor Belt Manager
 Conveyor Belt Manager uses the conveyor belt id to route the message to the appropriate conveyor belt

Routing the received package



LEG: Vendor to Helix Bin Routing
LEG: Routing Successful

Package reaches the destination conveyor belt

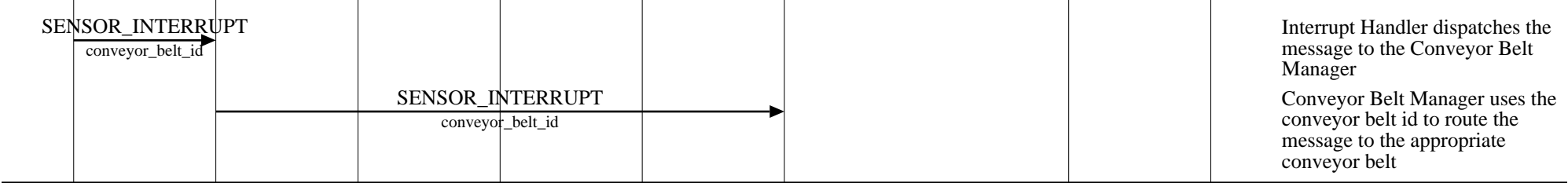


Interrupt Handler dispatches the message to the Conveyor Belt Manager
 Conveyor Belt Manager uses the conveyor belt id to route the message to the appropriate conveyor belt

| | | | | | | | | | |
|---|-----------------------|----------|---------------|-----------------------|---------------------|---------|----------------------|------------------------|--------------------------------|
| SENSOR Interfaces (Conveyor Belt Jammed) | | | | | | | | | |
| helix router | | | | | | | | | EventHelix.com/EventStudio 2.0 |
| core | | | | input | | | output | | |
| interrupt handler | conveyor belt manager | operator | routing table | input magnetic sensor | input conveyor belt | package | output conveyor belt | output magnetic sensor | 05-Jul-03 11:23 (Page 2) |

Copyright © 2000-2003 EventHelix.com Inc. All Rights Reserved.

A new package has been received at an input conveyor belt.



Interrupt Handler dispatches the message to the Conveyor Belt Manager
 Conveyor Belt Manager uses the conveyor belt id to route the message to the appropriate conveyor belt

Routing the received package

LEG: Helix Bin to Customer Routing
LEG: Conveyor Belt Jammed

| | | | | | | |
|--|--------|----------|---------------|-----------------------|---------------|--------------------------------|
| SENSOR Interfaces (Creating and Deleting a Conveyor Belt) | | | | | | |
| helix router | | | | | | EventHelix.com/EventStudio 2.0 |
| core | | | | belt | | |
| interrupt handler | router | operator | routing table | conveyor belt manager | conveyor belt | magnetic sensor |
| | | | | | | 05-Jul-03 11:23 (Page 3) |

Copyright © 2000-2003 EventHelix.com Inc. All Rights Reserved.

Creating a Conveyor Belt

Routing Table Update for the New Conveyor Belt

Deleting a Conveyor Belt

| | | | | | | |
|--|--|--|--|--|--|--|
| | | | | | | |
|--|--|--|--|--|--|--|