

Processor Interfaces (NFS Protocol Sequence Diagram)

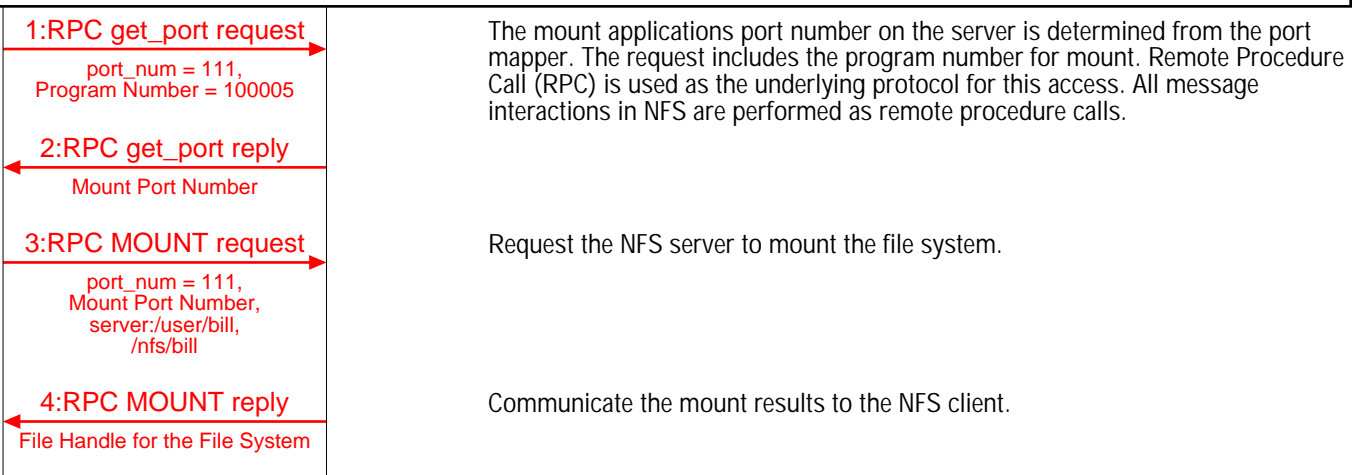
Client	Server	EventStudio System Designer 4.0
NFS Client	NFS Server	11-Aug-07 22:47 (Page 1)

This diagram was generated with EventStudio System Designer 4.0. (<http://www.EventHelix.com/EventStudio>)
 Copyright © 2000-2007 EventHelix.com Inc. All Rights Reserved.

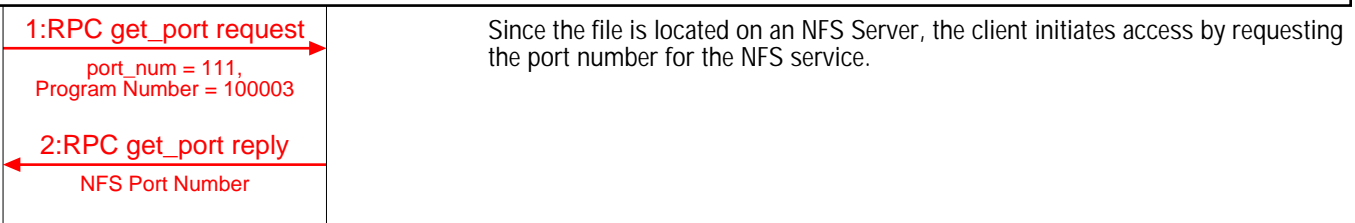
This sequence diagram describes mounting, opening and reading of a file via the NFS (Network File System).

Server Startup

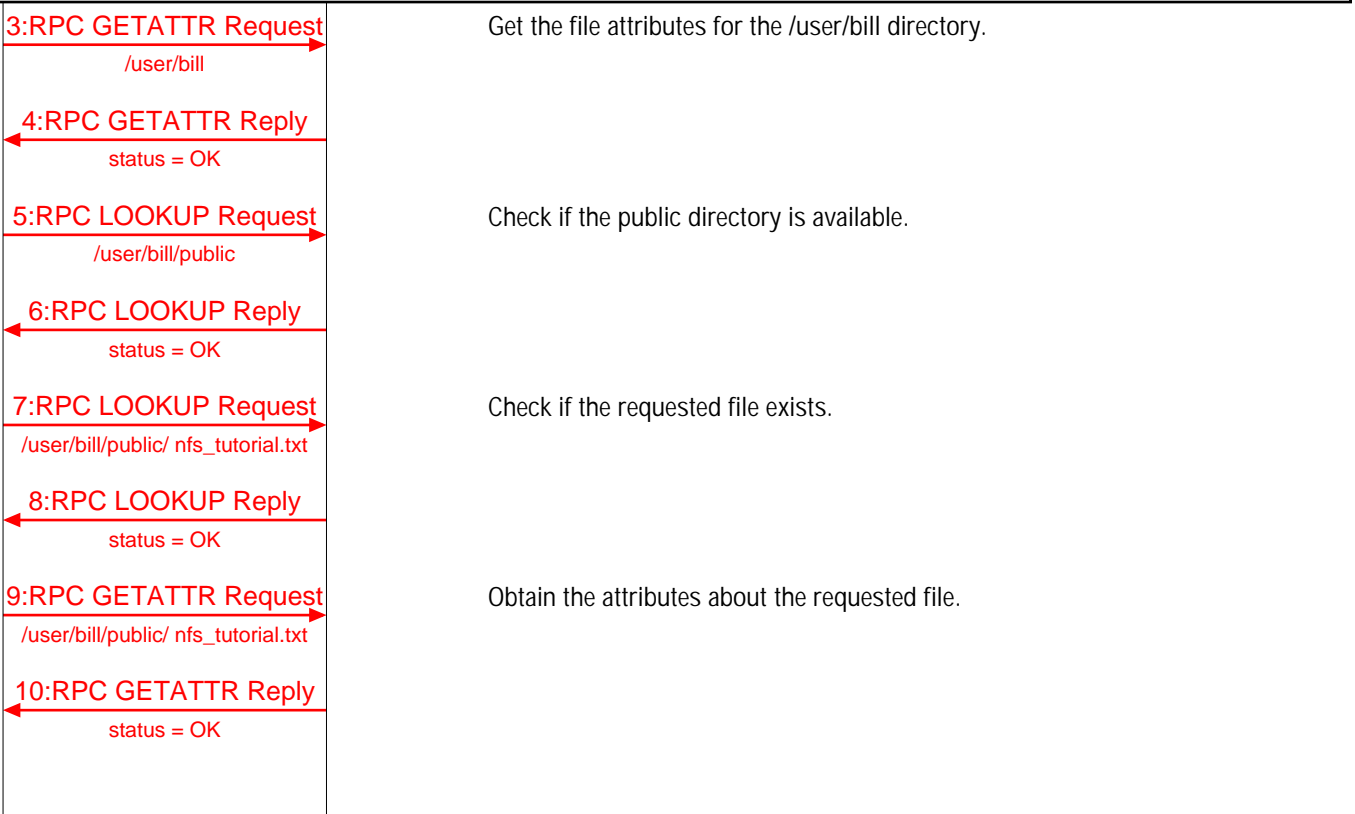
NFS Mount



Opening a File



The client hierarchically parses the path and obtains a file handle. NFS commands GETATTR and LOOKUP are used to perform these operations. GETATTR returns the attributes of a file, for example permissions, file size, file owner. LOOKUP looks up the file and returns a file handle to the file.



Processor Interfaces (NFS Protocol Sequence Diagram)

Client	Server	EventStudio System Designer 4.0
NFS Client	NFS Server	11-Aug-07 22:47 (Page 2)

Reading File Contents

This file is on a NFS mounted file system, so the read command is performed via NFS READ RPC calls. The READ calls specify the file name, the starting offset in each request. The NFS server reads the standard block size and returns to the client. Note that the NFS server itself is stateless and handles each request independently. The client maintains the application and performs multiple reads to complete the file read.

The following interaction shows how the client performs multiple reads to complete the file reading operation.

