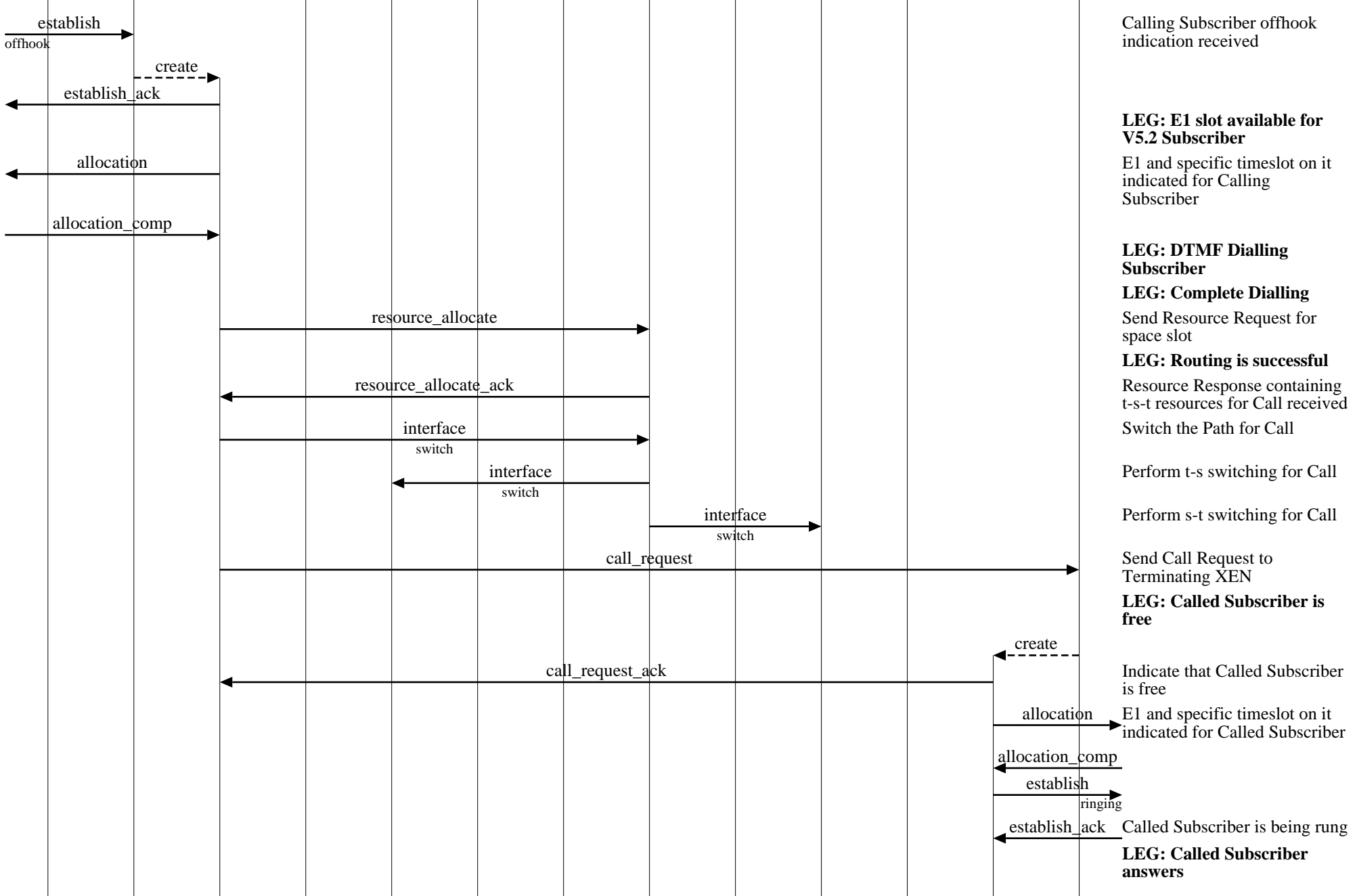


**Processor Interfaces (V5.2 - V5.2: Successful call)**

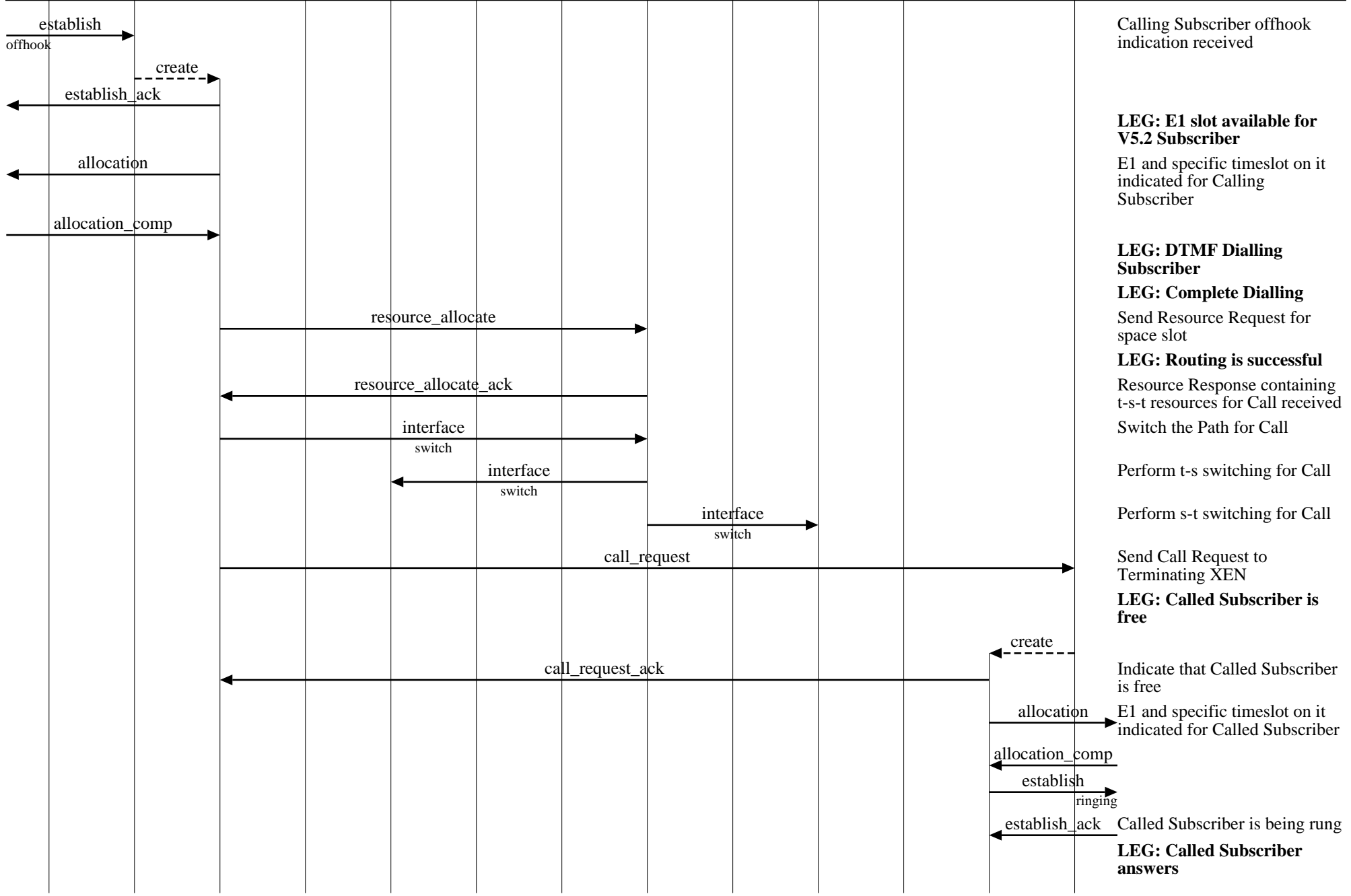
xenon													<b>EventStudio 1.0.2</b>
xen1						cas			xen2				22-Oct-00 19:27 (Page 1)
dsp1	v5 mgr1	v5 call1	E1 mgr1	ts mgr1	tone mgr1	rout mgr	ss mgr	tone mgr2	ts mgr2	E1 mgr2	v5 call2	v5 mgr2	

Copyright (c) 2000 EventHelix.com. All Rights Reserved.





Copyright (c) 2000 EventHelix.com. All Rights Reserved.



Calling Subscriber offhook indication received

**LEG: E1 slot available for V5.2 Subscriber**

E1 and specific timeslot on it indicated for Calling Subscriber

**LEG: DTMF Dialling Subscriber**

**LEG: Complete Dialling**

Send Resource Request for space slot

**LEG: Routing is successful**

Resource Response containing t-s-t resources for Call received

Switch the Path for Call

Perform t-s switching for Call

Perform s-t switching for Call

Send Call Request to Terminating XEN

**LEG: Called Subscriber is free**

Indicate that Called Subscriber is free

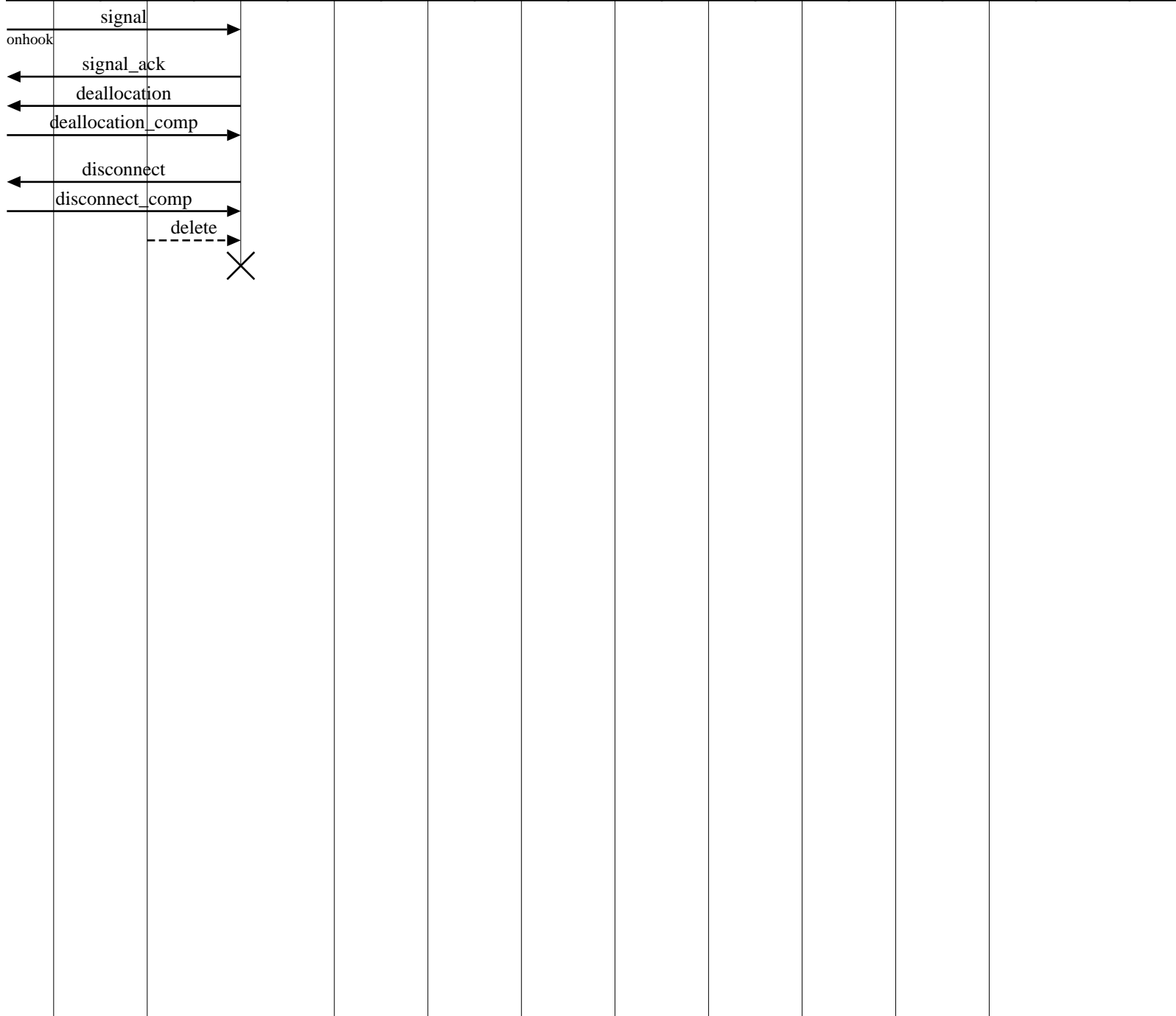
E1 and specific timeslot on it indicated for Called Subscriber

Called Subscriber is being rung

Called Subscriber answers

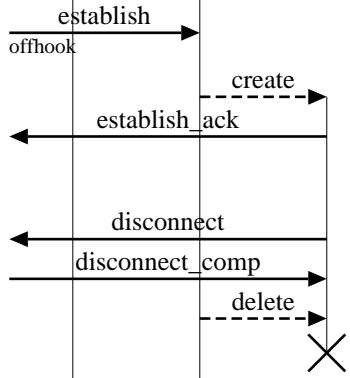
**LEG: Called Subscriber answers**





Indicate E1 timeslot freed  
towards Calling Subscriber

Copyright (c) 2000 EventHelix.com. All Rights Reserved.



Calling Subscriber offhook  
indication received

**LEG: E1 slot not available  
for V5.2 Subscriber**  
Call failure indicated in V5.2

Copyright (c) 2000 EventHelix.com. All Rights Reserved.



Calling Subscriber offhook indication received

**LEG: E1 slot available for V5.2 Subscriber**

E1 and specific timeslot on it indicated for Calling Subscriber

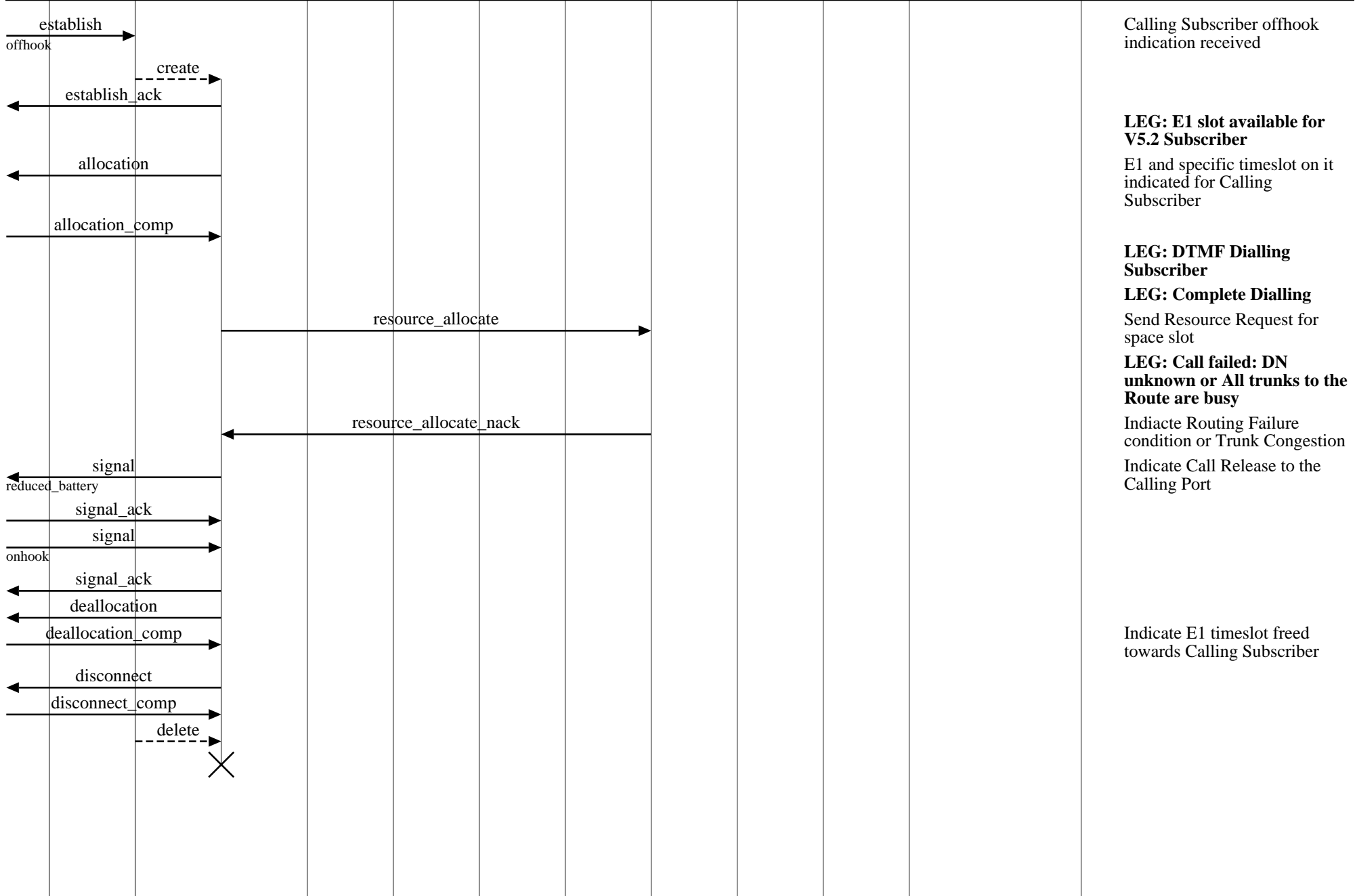
**LEG: DTMF Dialling Subscriber**

**LEG: No Dialling or Partial Dialling**

Indicate Call Release to Calling Port

Indicate E1 timeslot freed towards Calling Subscriber

Copyright (c) 2000 EventHelix.com. All Rights Reserved.



Calling Subscriber offhook indication received

**LEG: E1 slot available for V5.2 Subscriber**

E1 and specific timeslot on it indicated for Calling Subscriber

**LEG: DTMF Dialling Subscriber**

**LEG: Complete Dialling**

Send Resource Request for space slot

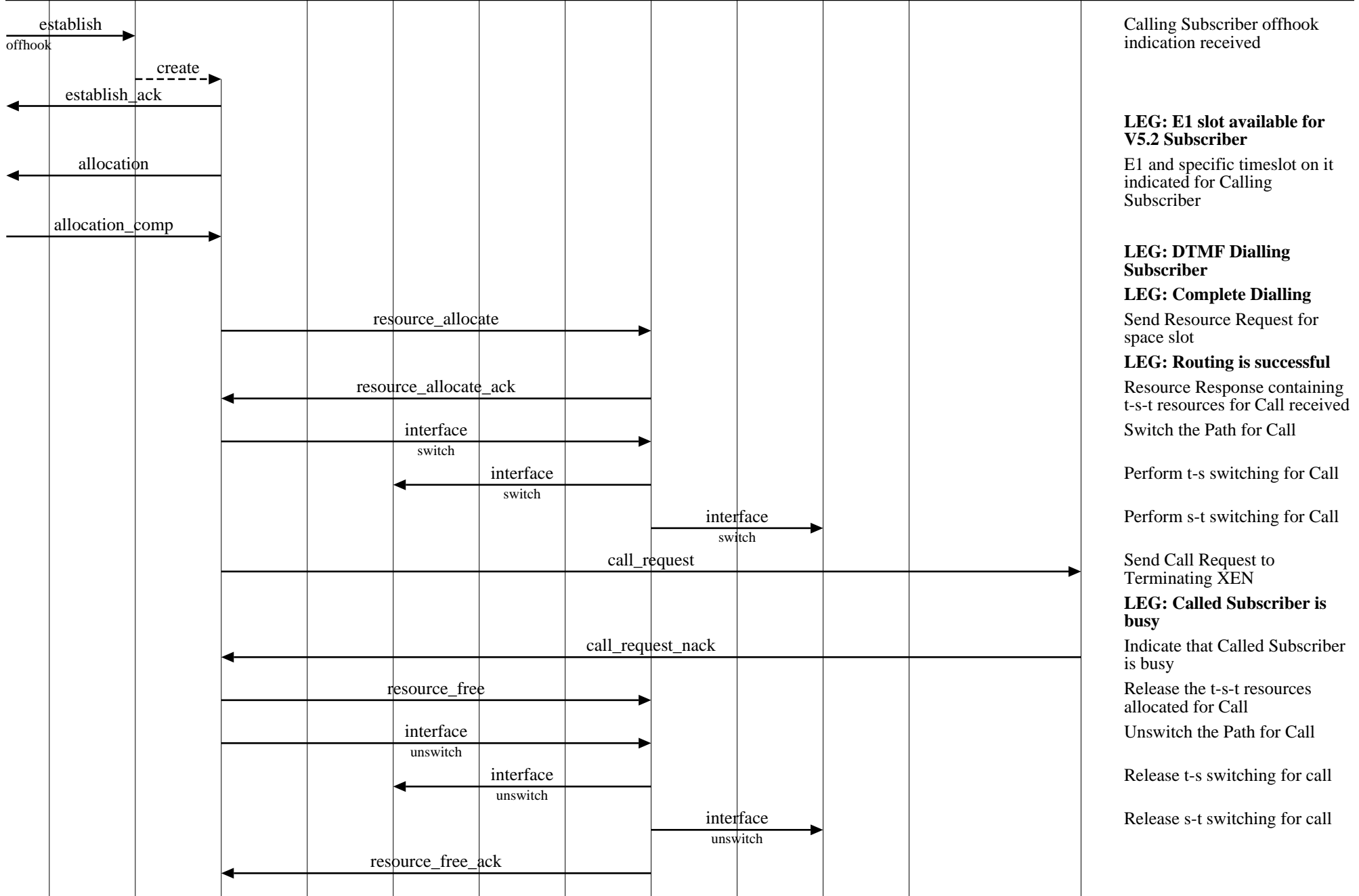
**LEG: Call failed: DN unknown or All trunks to the Route are busy**

Indicate Routing Failure condition or Trunk Congestion

Indicate Call Release to the Calling Port

Indicate E1 timeslot freed towards Calling Subscriber

Copyright (c) 2000 EventHelix.com. All Rights Reserved.



Calling Subscriber offhook indication received

**LEG: E1 slot available for V5.2 Subscriber**  
E1 and specific timeslot on it indicated for Calling Subscriber

**LEG: DTMF Dialling Subscriber**  
**LEG: Complete Dialling**  
Send Resource Request for space slot

**LEG: Routing is successful**  
Resource Response containing t-s-t resources for Call received  
Switch the Path for Call

Perform t-s switching for Call

Perform s-t switching for Call

Send Call Request to Terminating XEN

**LEG: Called Subscriber is busy**  
Indicate that Called Subscriber is busy

Release the t-s-t resources allocated for Call

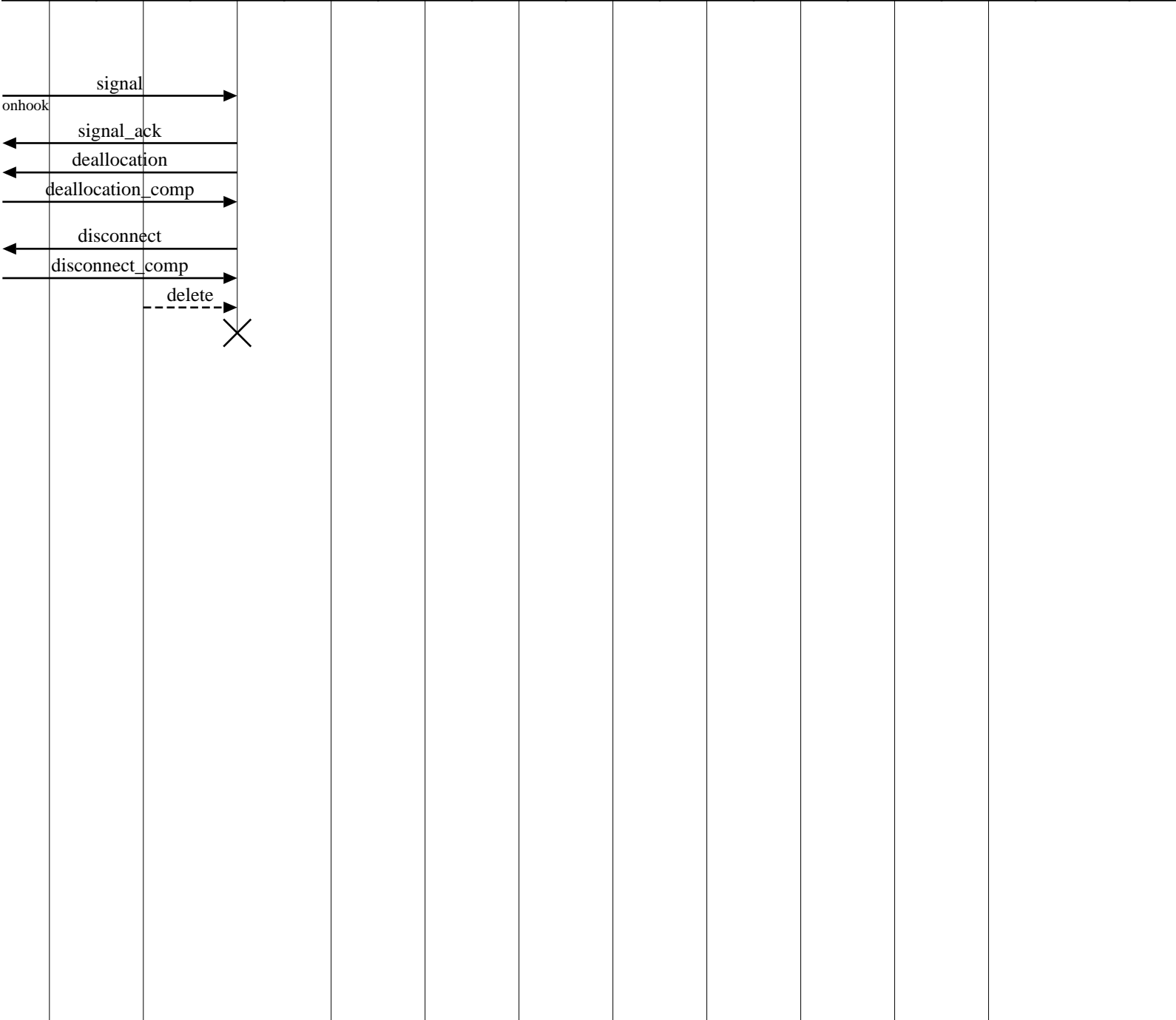
Unswitch the Path for Call

Release t-s switching for call

Release s-t switching for call

**Processor Interfaces (V5.2: Called subscriber is busy)**

xenon												<b>EventStudio 1.0.2</b>	
xen1						cas		xen2				22-Oct-00 19:27 (Page 10)	
dsp1	v5 mgr1	v5 call1	E1 mgr1	ts mgr1	tone mgr1	rout mgr	ss mgr	tone mgr2	ts mgr2	E1 mgr2	v5 call2	v5 mgr2	



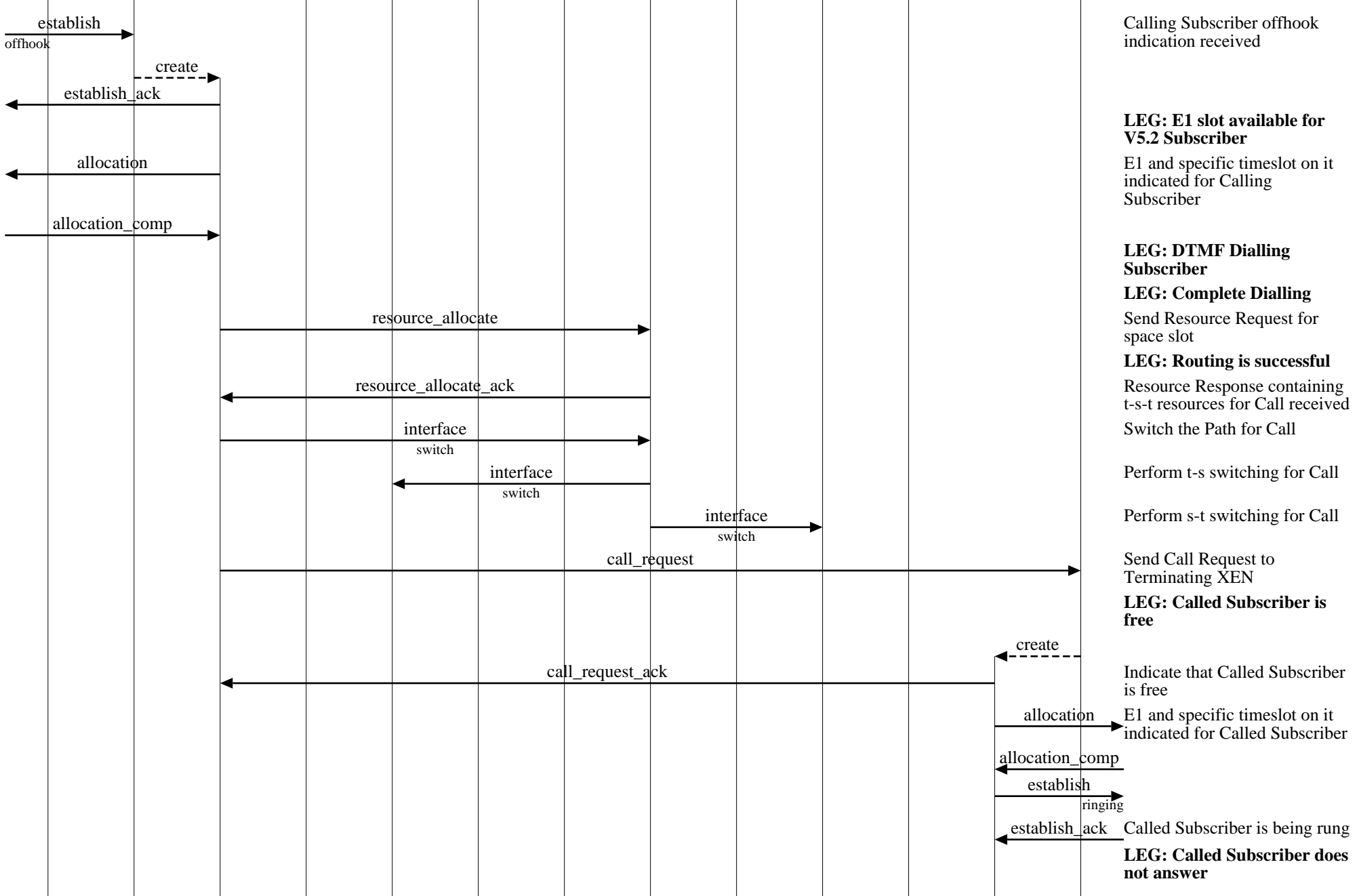
**LEG: Calling Subscriber goes onhook on hearing Busy tone**

Indicale E1 timeslot freed towards Calling Subscriber

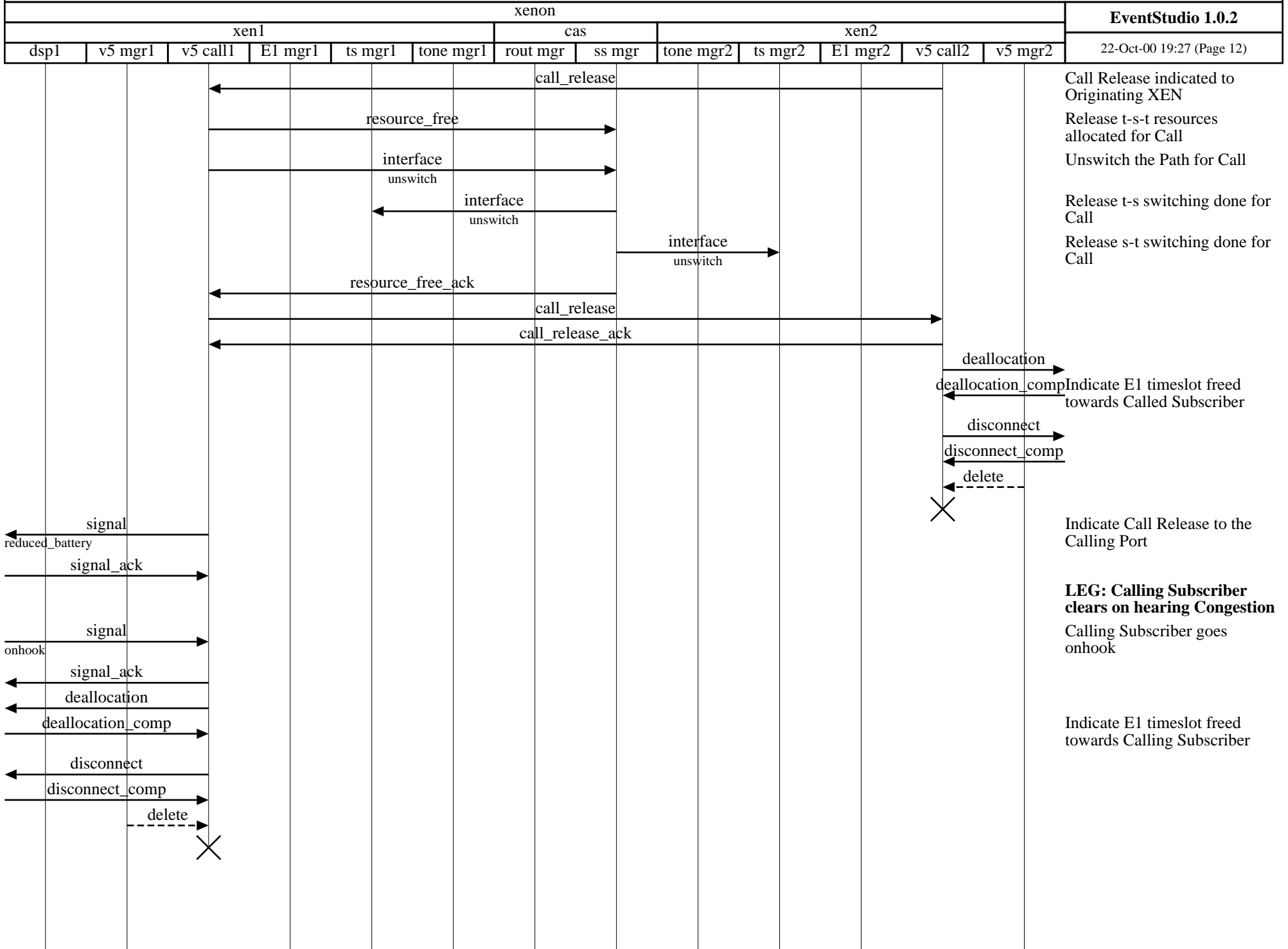
**Processor Interfaces (V5.2: Called subscriber does not answer)**

xenon												<b>EventStudio 1.0.2</b>
xen1						cas		xen2				22-Oct-00 19:27 (Page 11)
dsp1	v5 mgr1	v5 call1	E1 mgr1	ts mgr1	tone mgr1	rout mgr	ss mgr	tone mgr2	ts mgr2	E1 mgr2	v5 call2	v5 mgr2

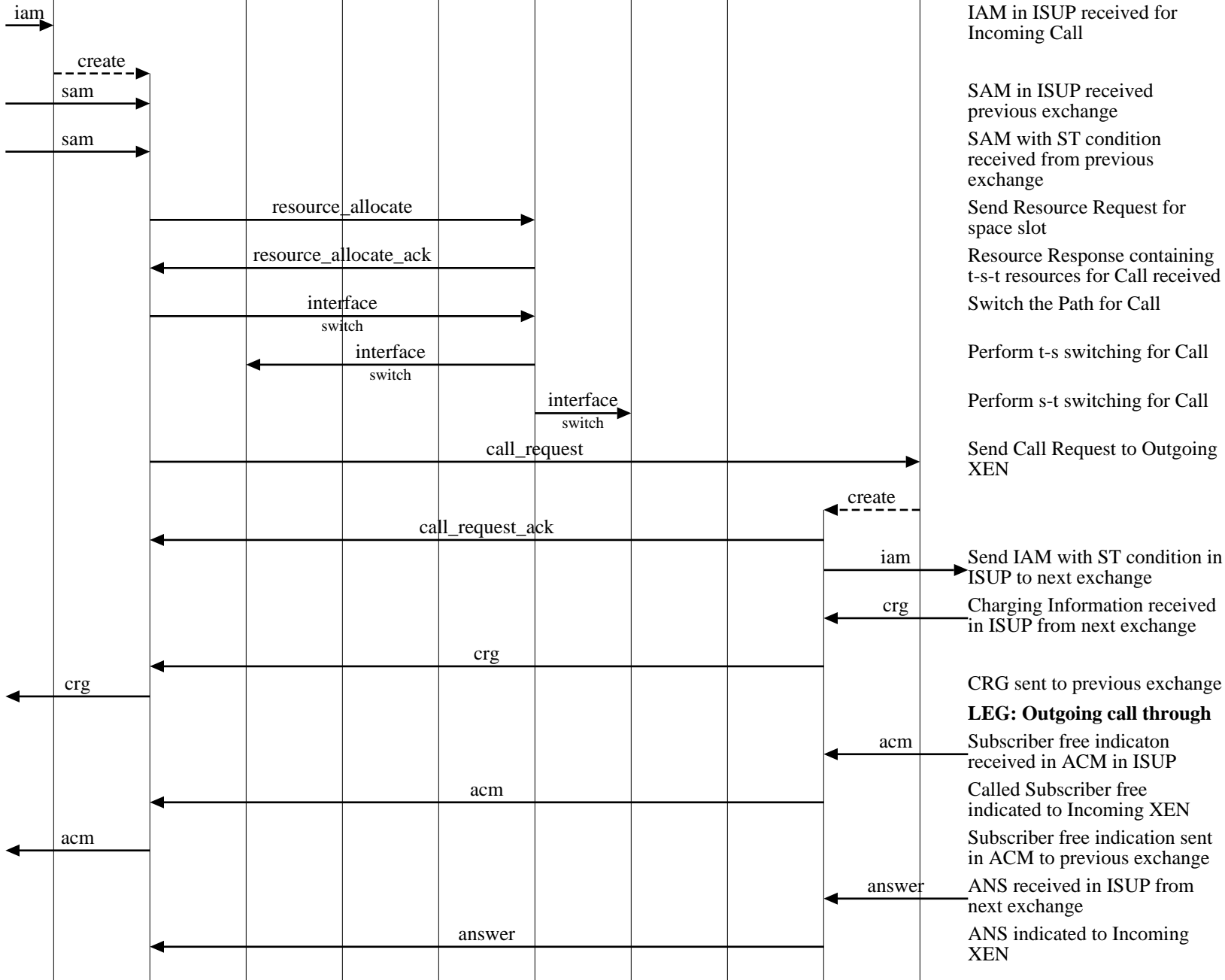
Copyright (c) 2000 EventHelix.com. All Rights Reserved.

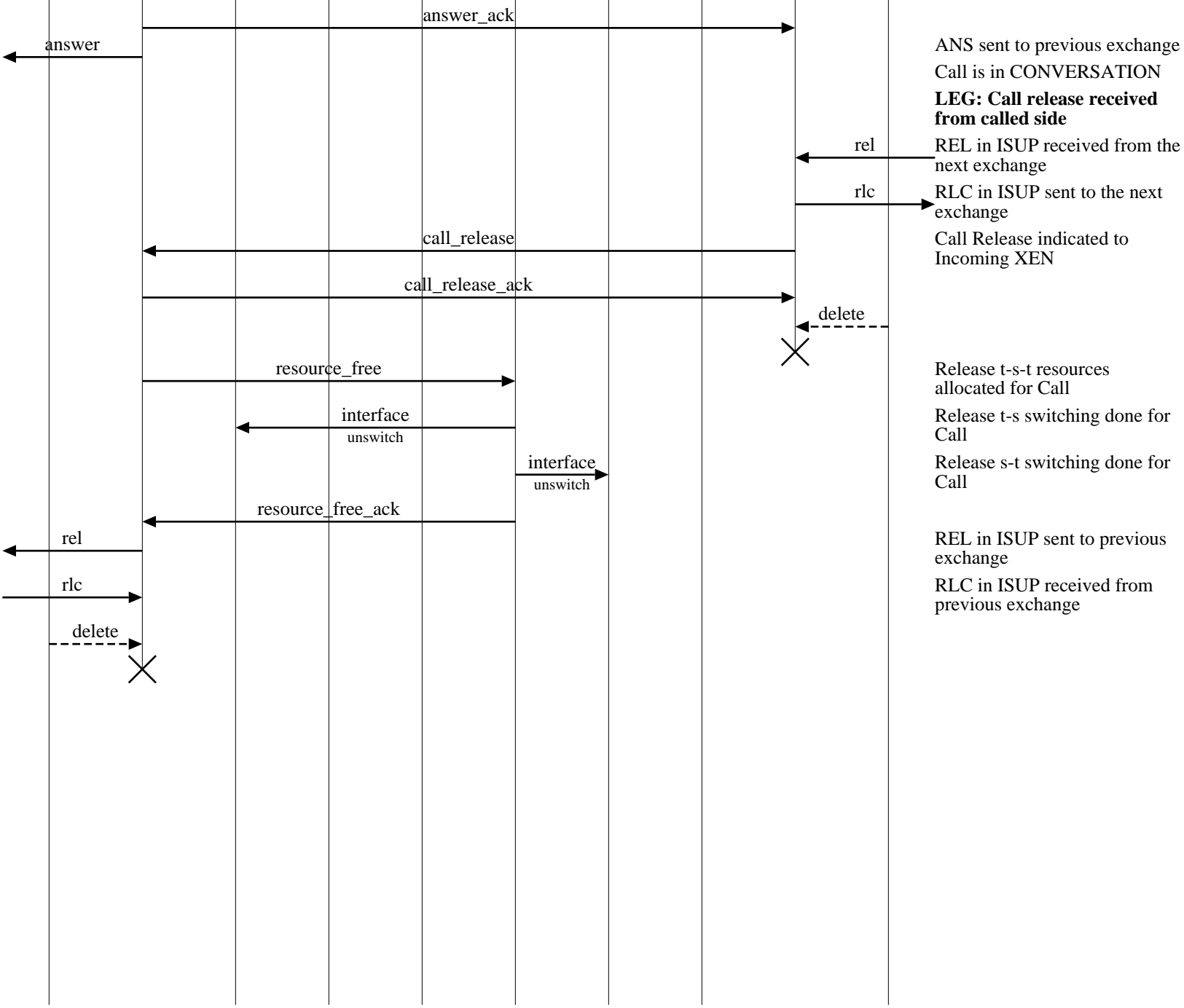


**Processor Interfaces (V5.2: Called subscriber does not answer)**

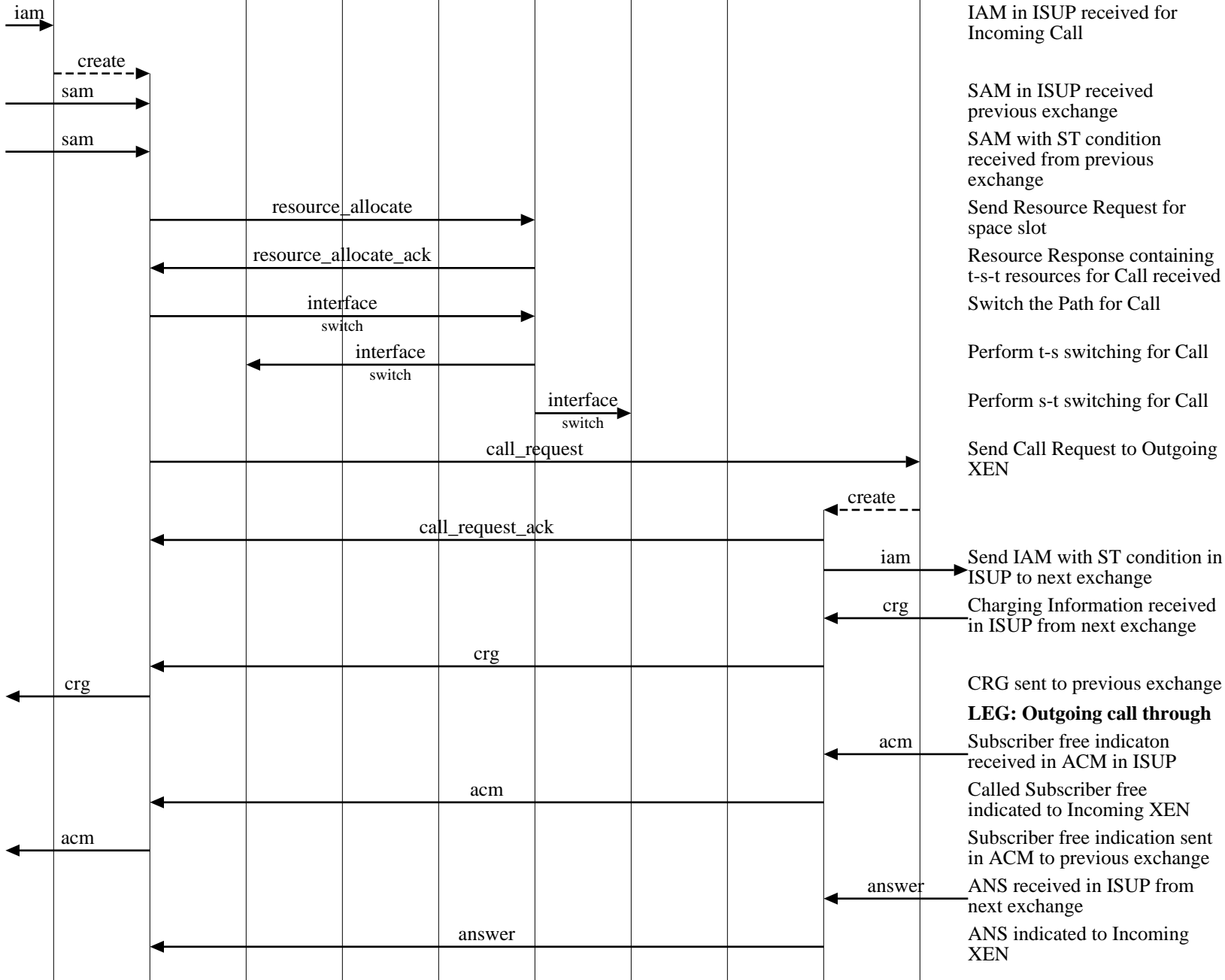


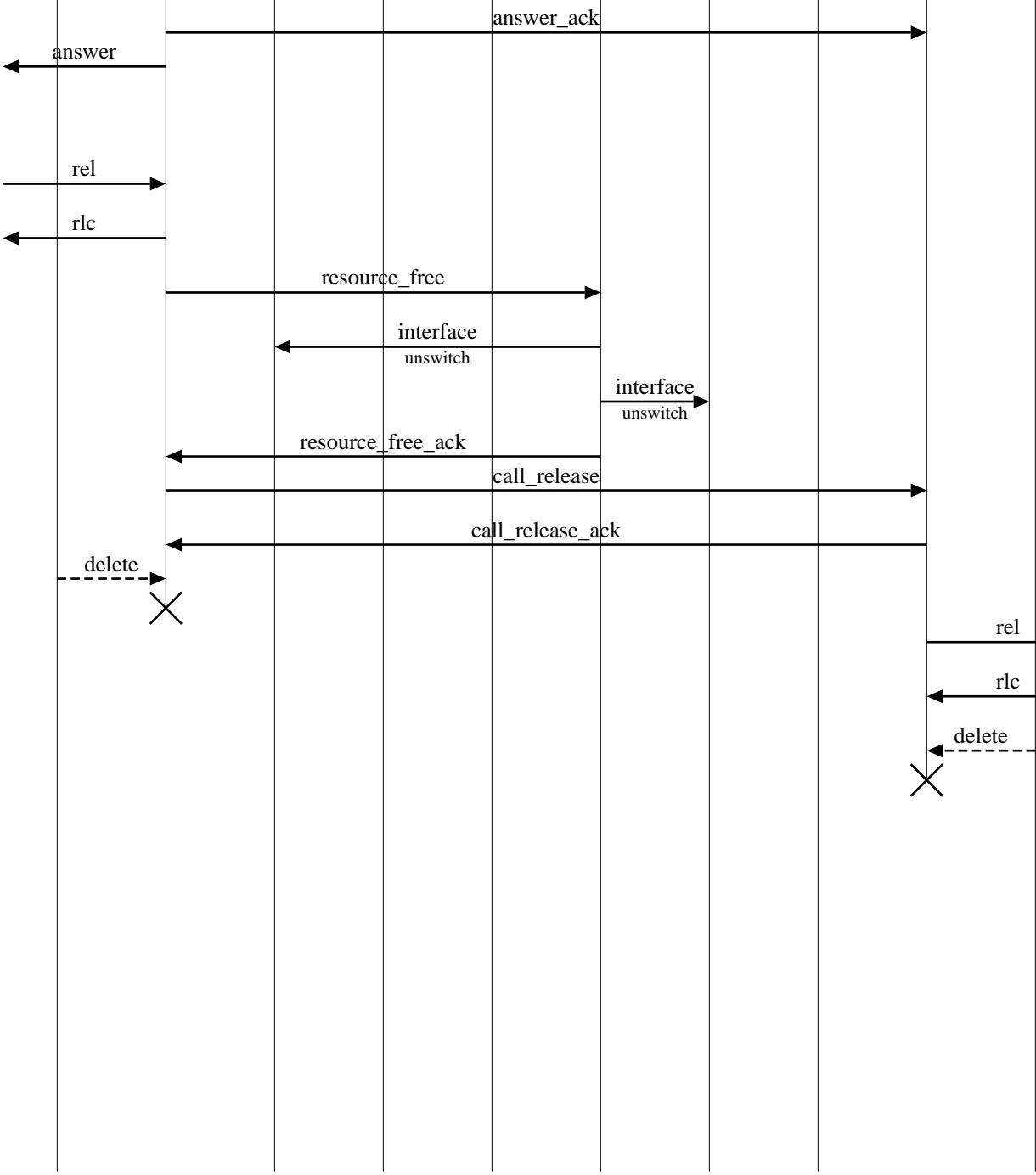
Copyright (c) 2000 EventHelix.com. All Rights Reserved.





Copyright (c) 2000 EventHelix.com. All Rights Reserved.



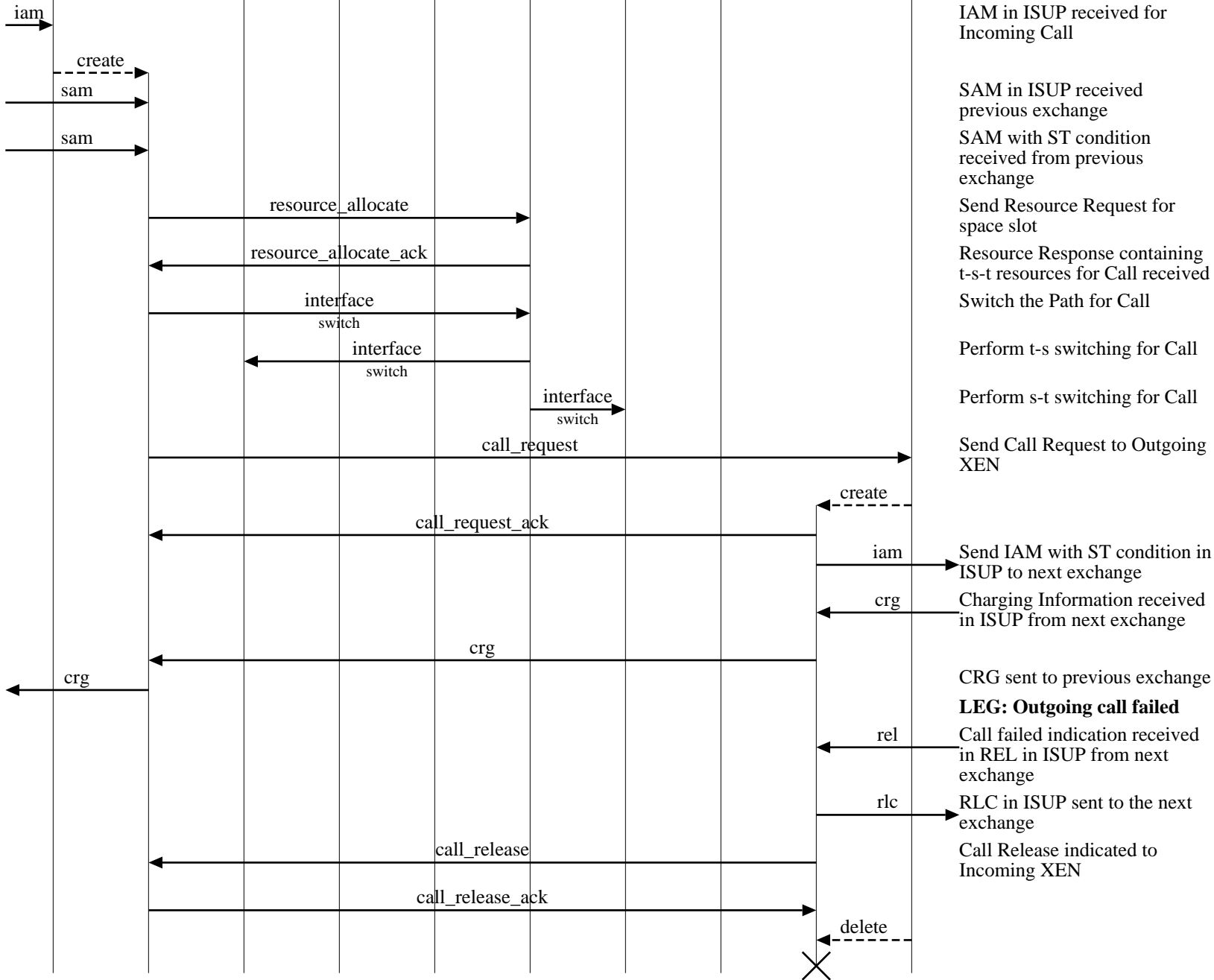


ANS sent to previous exchange  
 Call is in CONVERSATION  
**LEG: Call release received from calling side**  
 REL received in ISUP from the previous exchange  
 RLC in ISUP sent to the previous exchange  
 Release t-s-t resources allocated for Call  
 Release t-s switching done for Call  
 Release s-t switching done for Call

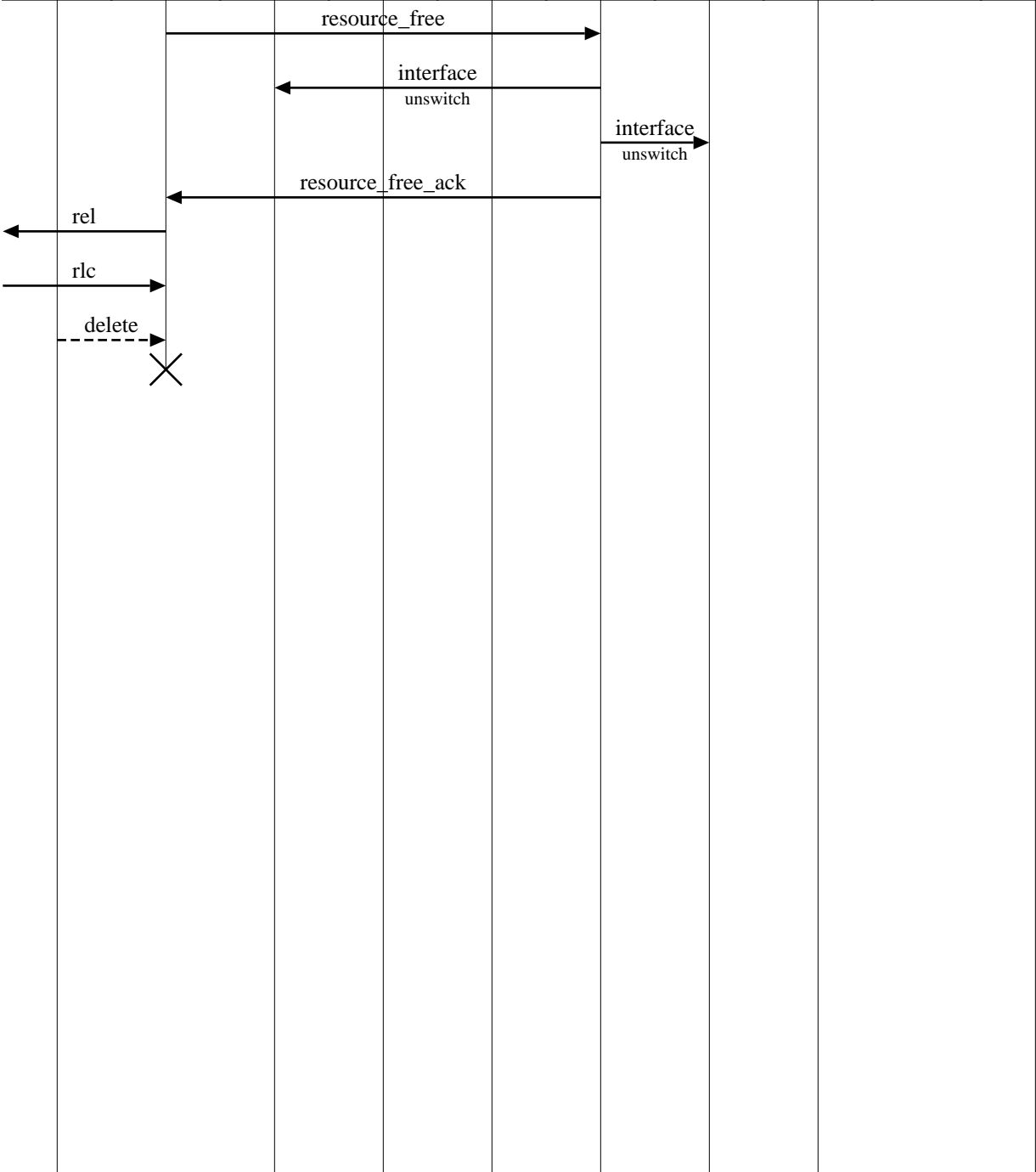
Call Release indicated to Outgoing XEN

REL in ISUP sent to the next exchange  
 RLC in ISUP received from the next exchange

Copyright (c) 2000 EventHelix.com. All Rights Reserved.



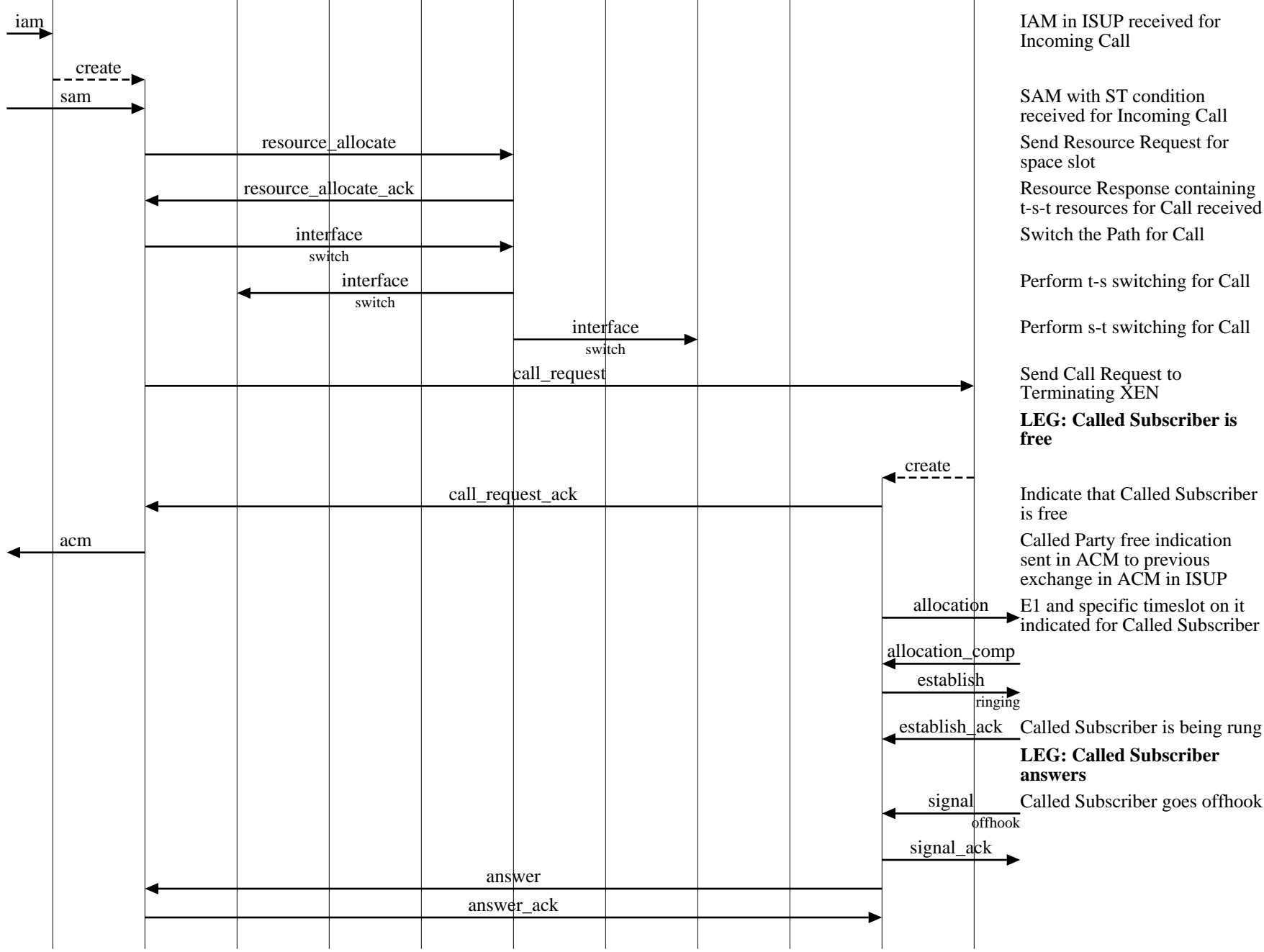
Processor Interfaces (ISUP - ISUP: Outgoing call failed)										
xenon								EventStudio 1.0.2		
xen1			cas		xen2					
isup mgr1	isup call1	ts mgr1	tone mgr1	rout mgr	ss mgr	ts mgr2	tone mgr2	isup call2	isup mgr2	22-Oct-00 19:27 (Page 18)



Release t-s-t resources allocated for Call  
 Release t-s switching done for Call  
 Release s-t switching done for Call

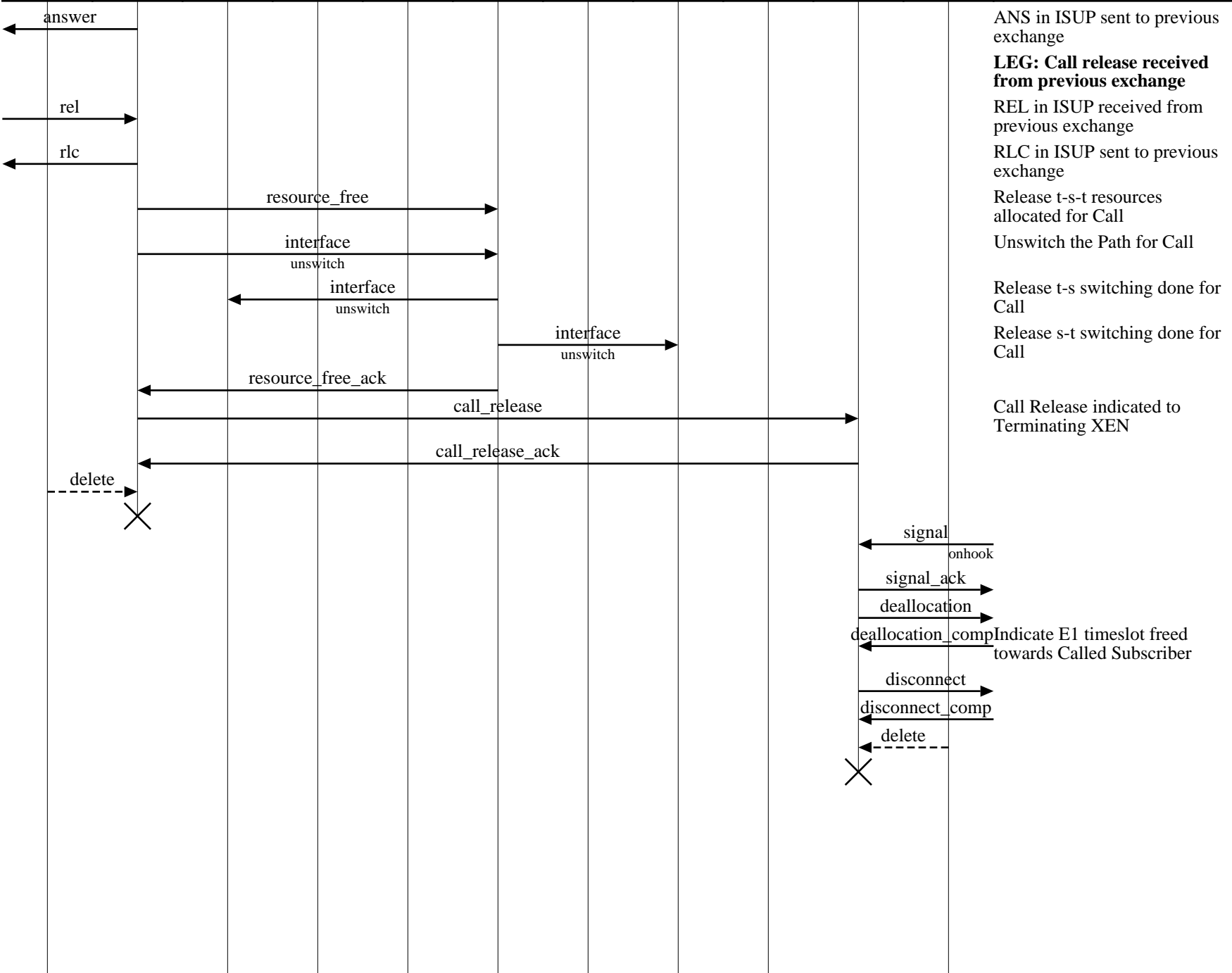
REL in ISUP sent to previous exchange  
 RLC in ISUP received from previous exchange

Copyright (c) 2000. EventHelix.com. All Rights Reserved.



**Processor Interfaces (ISUP - V5.2: Successful call)**

xenon											EventStudio 1.0.2
xen1				cas		xen2					
isup mgr1	isup call1	ts mgr1	tone mgr1	rout mgr	ss mgr	tone mgr2	ts mgr2	E1 mgr2	v5 call2	v5 mgr2	22-Oct-00 19:27 (Page 20)



ANS in ISUP sent to previous exchange

**LEG: Call release received from previous exchange**

REL in ISUP received from previous exchange

RLC in ISUP sent to previous exchange

Release t-s-t resources allocated for Call

Unswitch the Path for Call

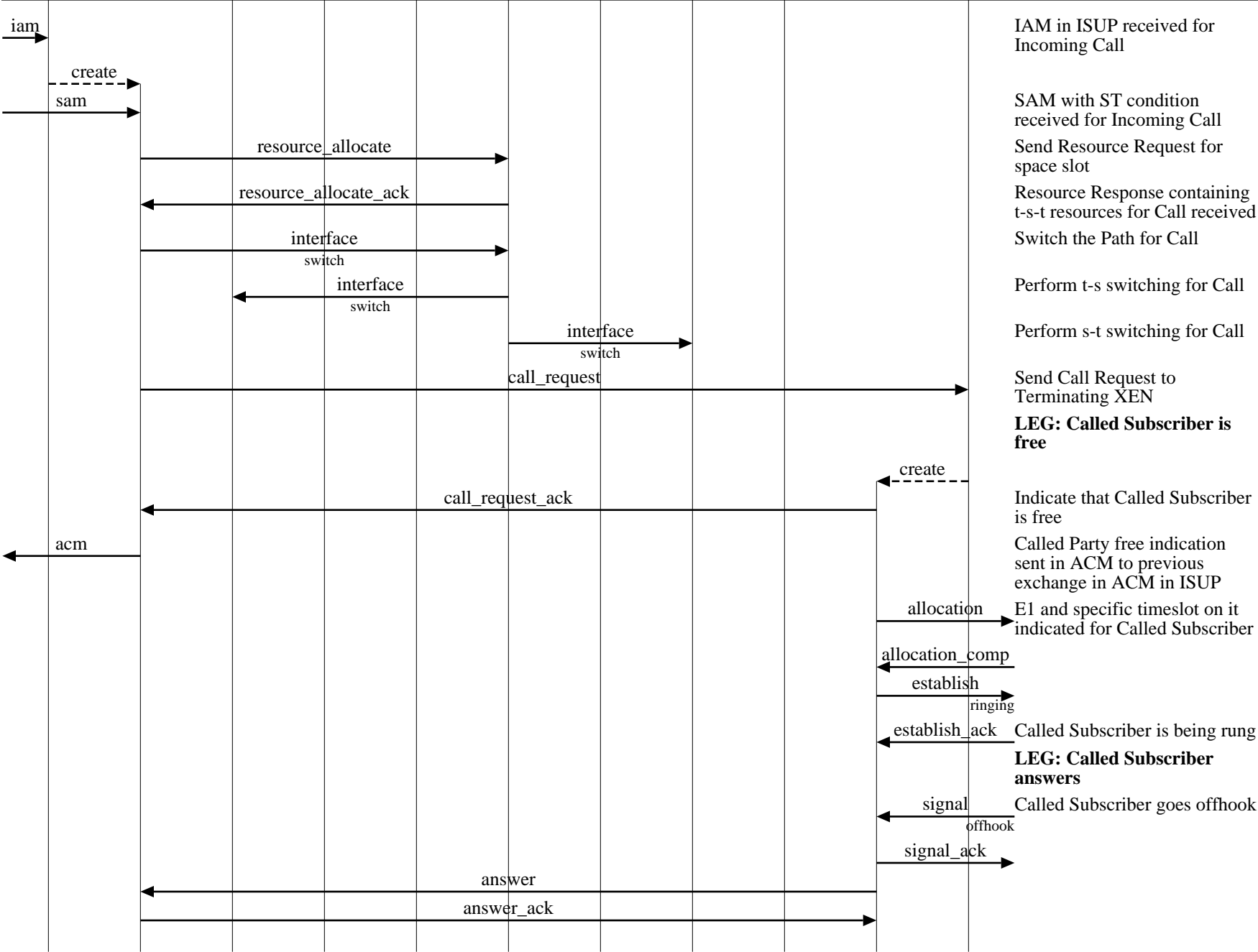
Release t-s switching done for Call

Release s-t switching done for Call

Call Release indicated to Terminating XEN

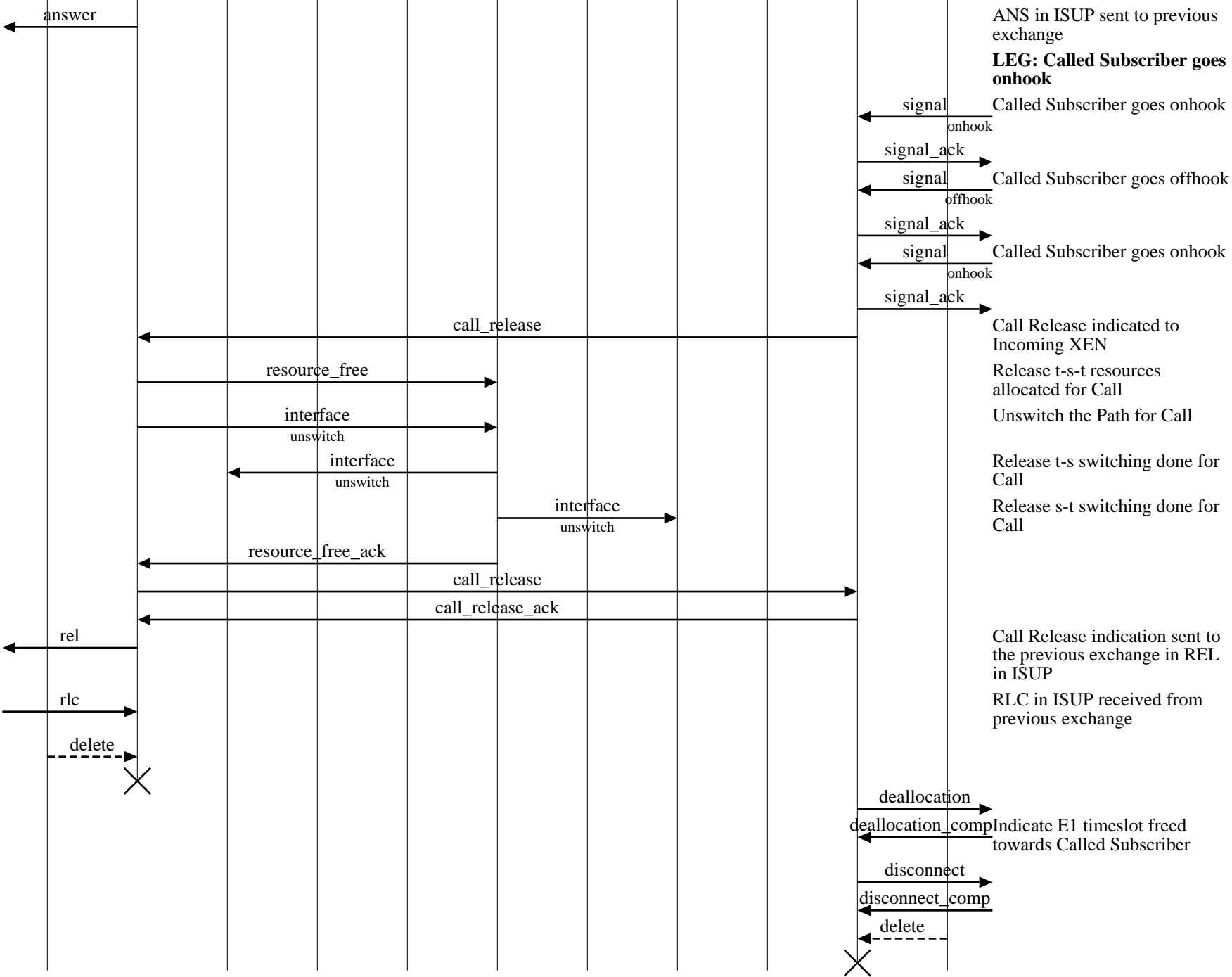
Indicate E1 timeslot freed towards Called Subscriber

Copyright (c) 2000. EventHelix.com. All Rights Reserved.

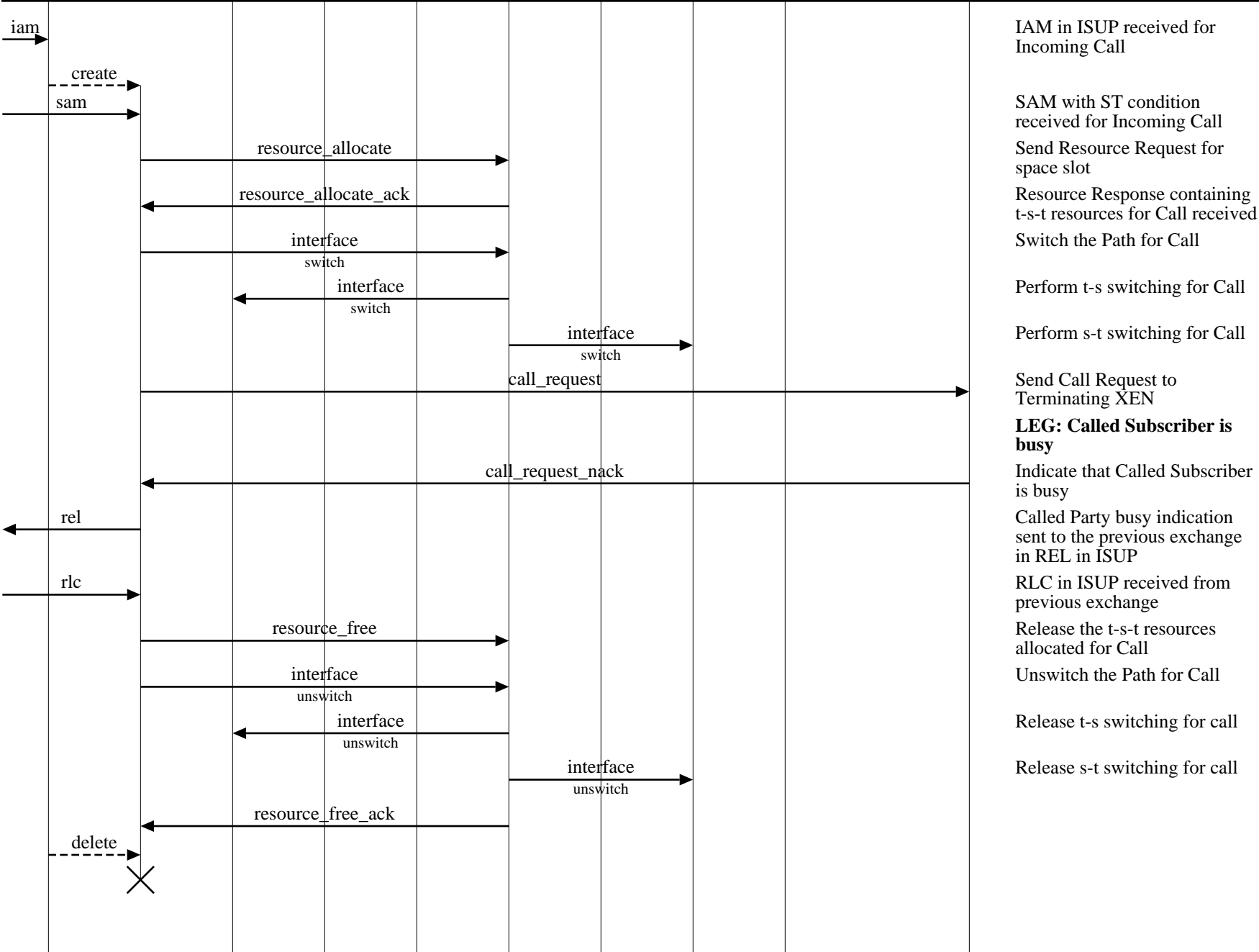


**Processor Interfaces (ISUP - V5.2: CSH timeout)**

xenon											EventStudio 1.0.2
xen1				cas		xen2					
isup mgr1	isup call1	ts mgr1	tone mgr1	rout mgr	ss mgr	tone mgr2	ts mgr2	E1 mgr2	v5 call2	v5 mgr2	22-Oct-00 19:27 (Page 22)



Copyright (c) 2000. EventHelix.com. All Rights Reserved.



IAM in ISUP received for Incoming Call

SAM with ST condition received for Incoming Call

Send Resource Request for space slot

Resource Response containing t-s-t resources for Call received

Switch the Path for Call

Perform t-s switching for Call

Perform s-t switching for Call

Send Call Request to Terminating XEN

**LEG: Called Subscriber is busy**

Indicate that Called Subscriber is busy

Called Party busy indication sent to the previous exchange in REL in ISUP

RLC in ISUP received from previous exchange

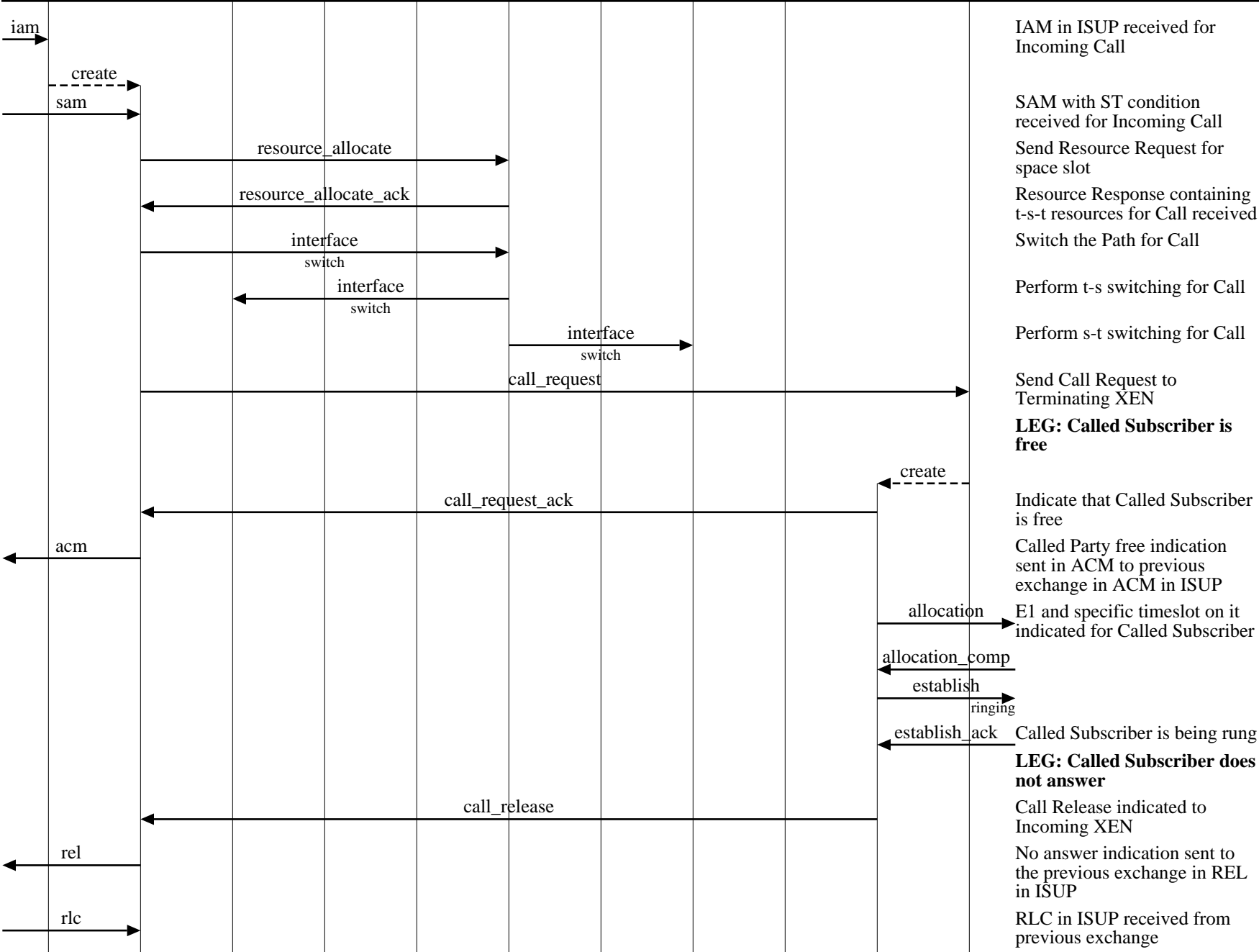
Release the t-s-t resources allocated for Call

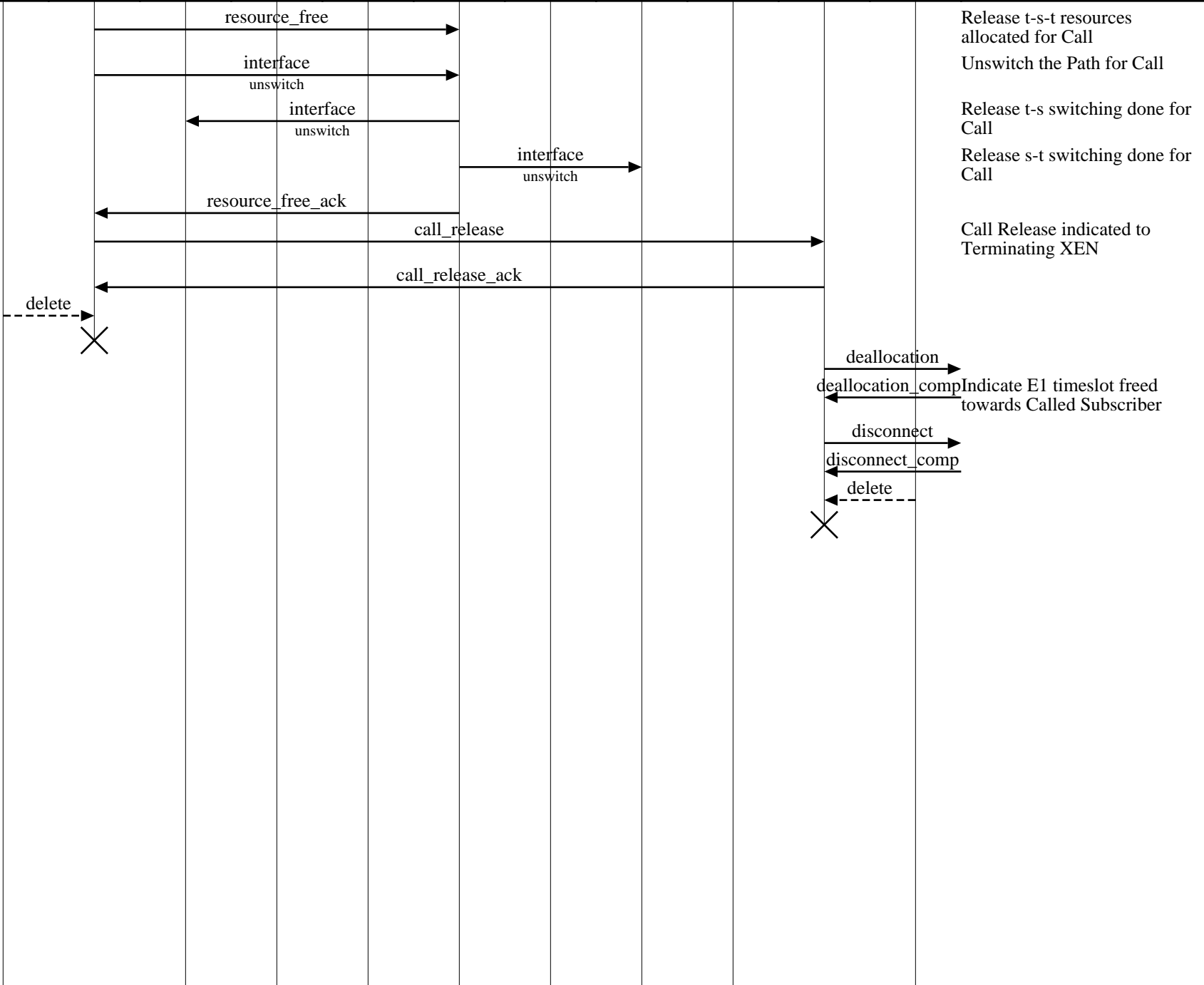
Unswitch the Path for Call

Release t-s switching for call

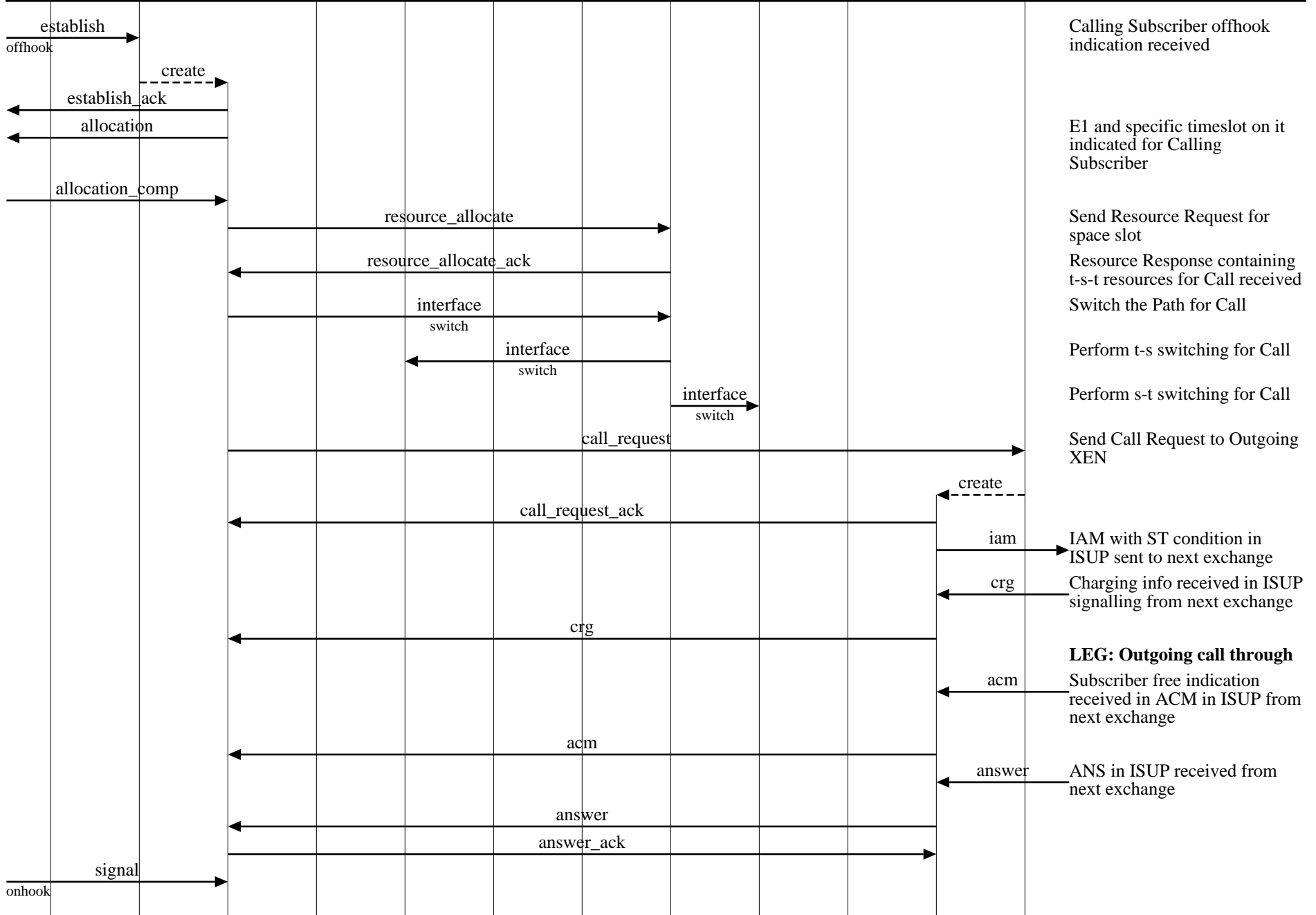
Release s-t switching for call

Copyright (c) 2000. EventHelix.com. All Rights Reserved.





Copyright (c) 2000. EventHelix.com. All Rights Reserved.



Calling Subscriber offhook indication received

E1 and specific timeslot on it indicated for Calling Subscriber

Send Resource Request for space slot

Resource Response containing t-s-t resources for Call received

Switch the Path for Call

Perform t-s switching for Call

Perform s-t switching for Call

Send Call Request to Outgoing XEN

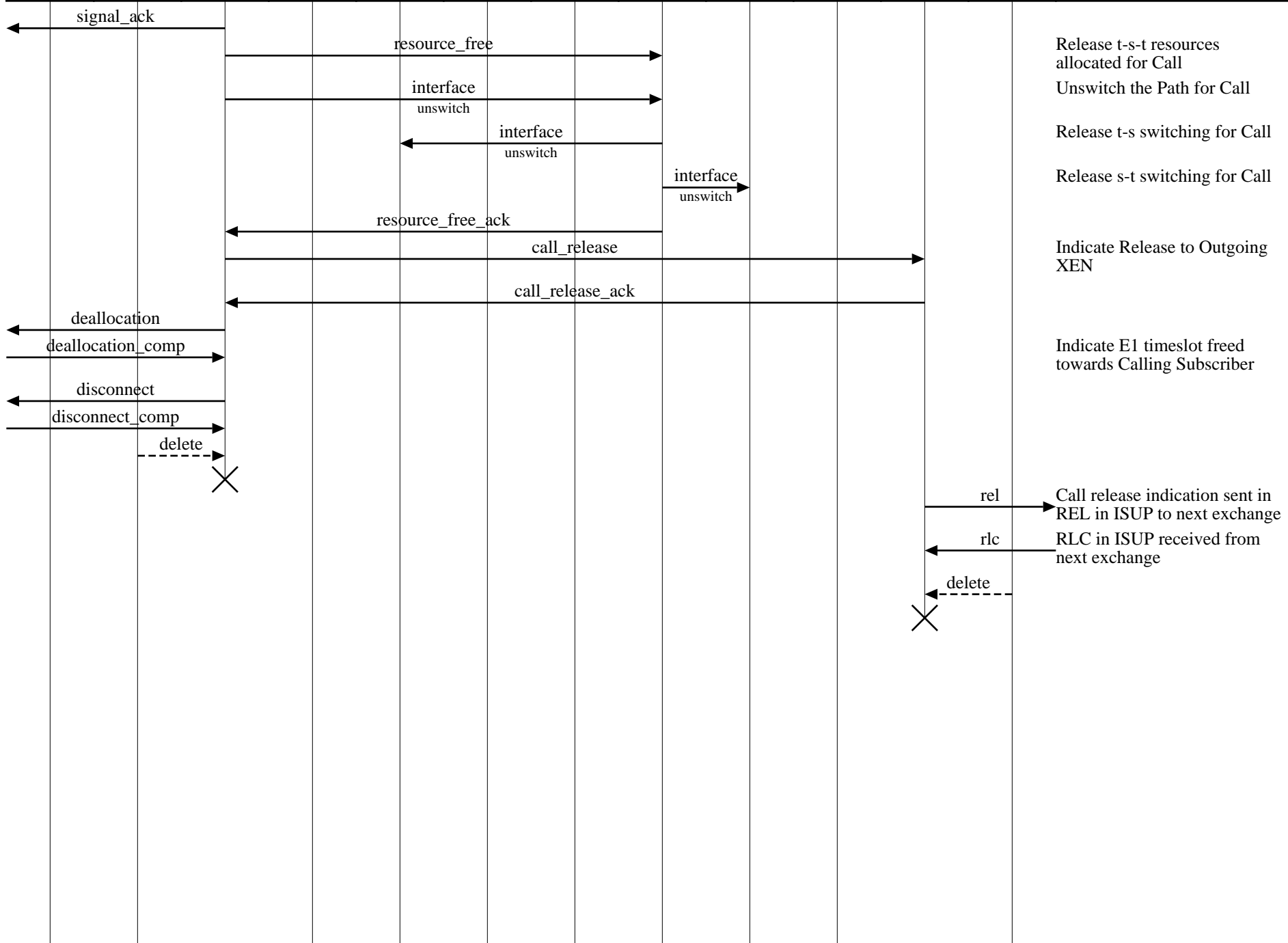
IAM with ST condition in ISUP sent to next exchange

Charging info received in ISUP signalling from next exchange

**LEG: Outgoing call through**

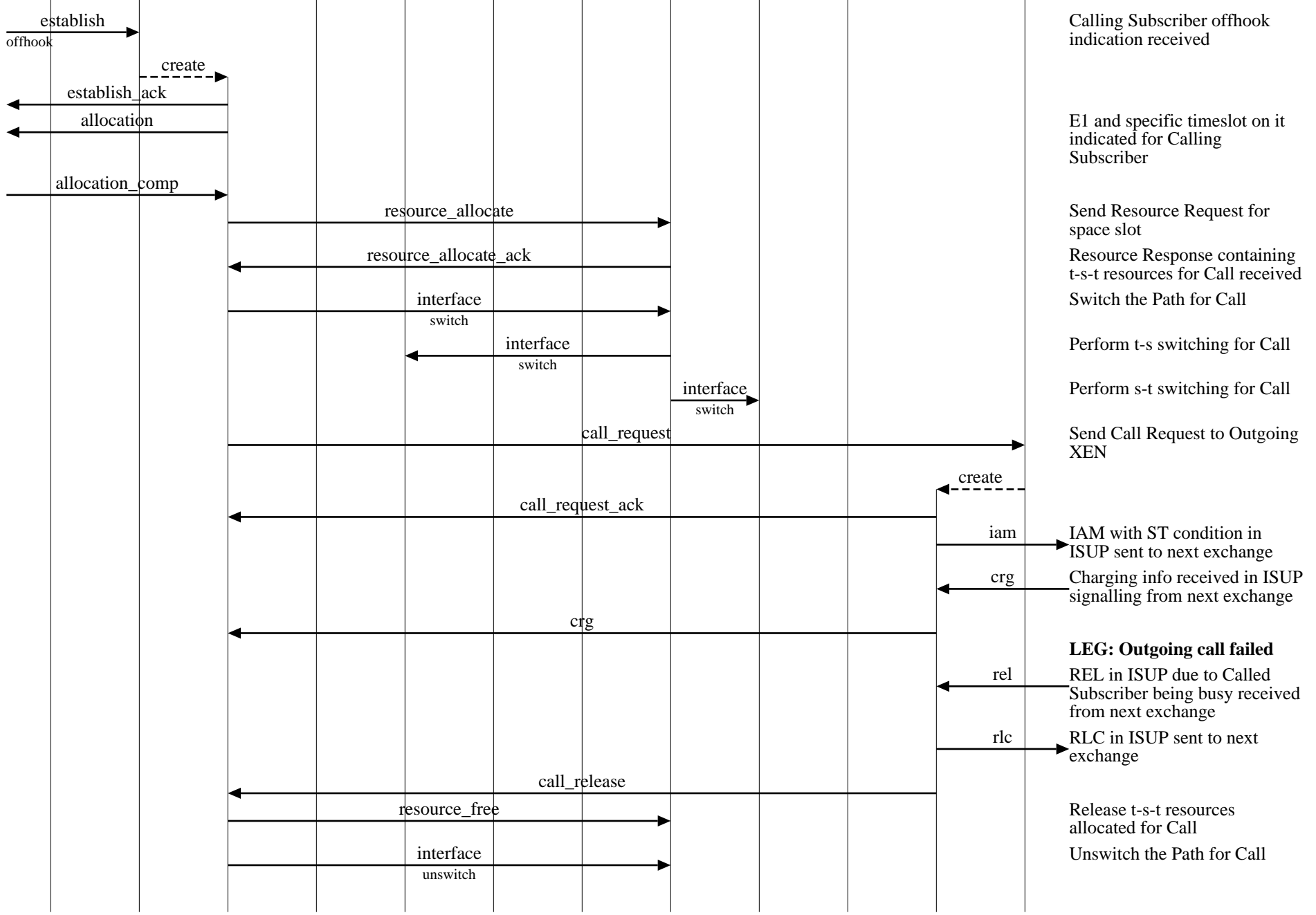
Subscriber free indication received in ACM in ISUP from next exchange

ANS in ISUP received from next exchange



Release t-s-t resources allocated for Call  
 Unswitch the Path for Call  
 Release t-s switching for Call  
 Release s-t switching for Call  
 Indicate Release to Outgoing XEN  
 Indicate E1 timeslot freed towards Calling Subscriber  
 Call release indication sent in REL in ISUP to next exchange  
 RLC in ISUP received from next exchange

Copyright (c) 2000. EventHelix.com. All Rights Reserved.



**Processor Interfaces (V5.2 - ISUP: Outgoing call failed)**

**EventStudio 1.0.2**

22-Oct-00 19:27 (Page 29)

