

Env Interfaces (V5.2 - V5.2: Successful call)

xenon

EventStudio 1.0.2

xen1

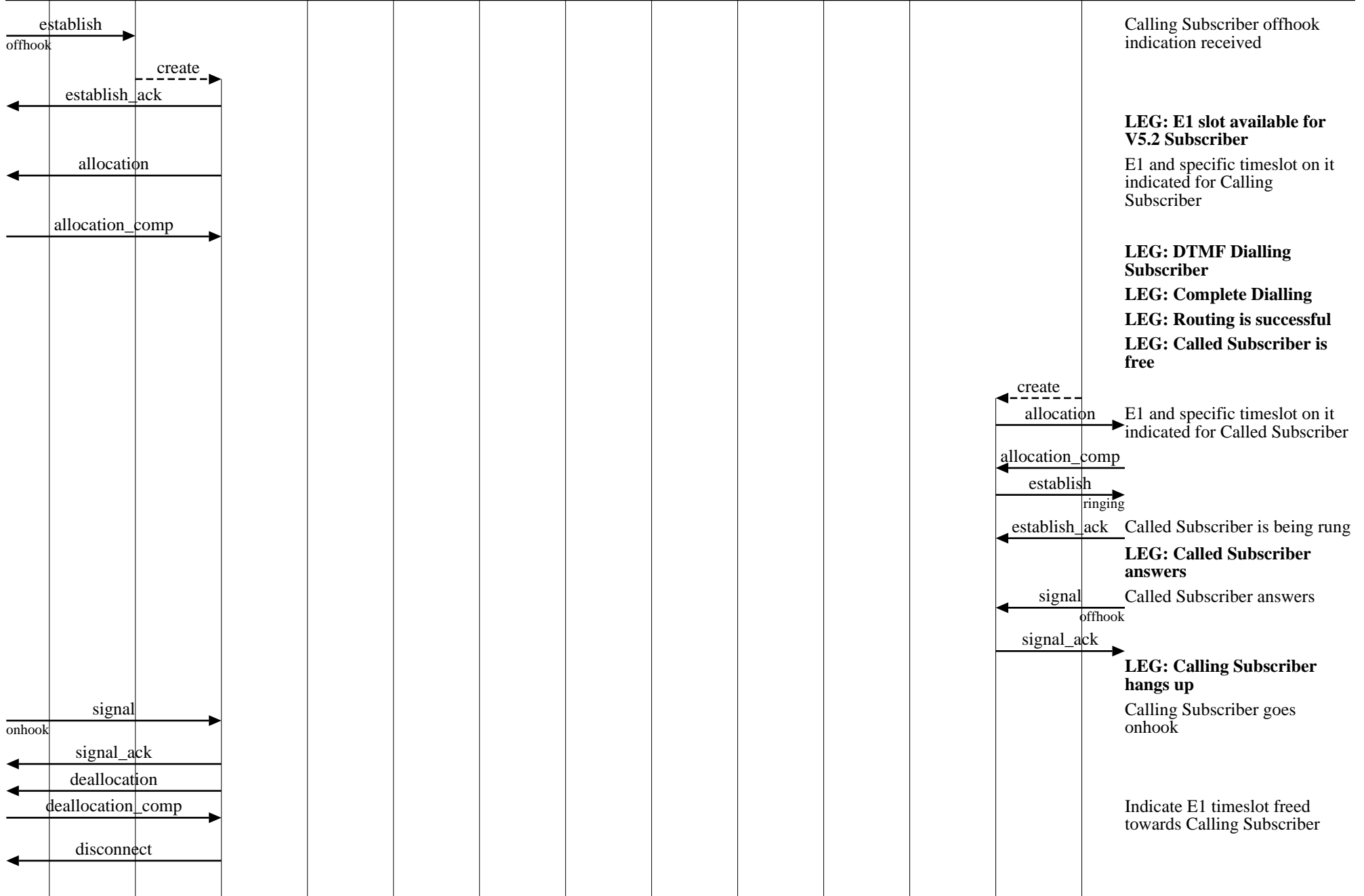
cas

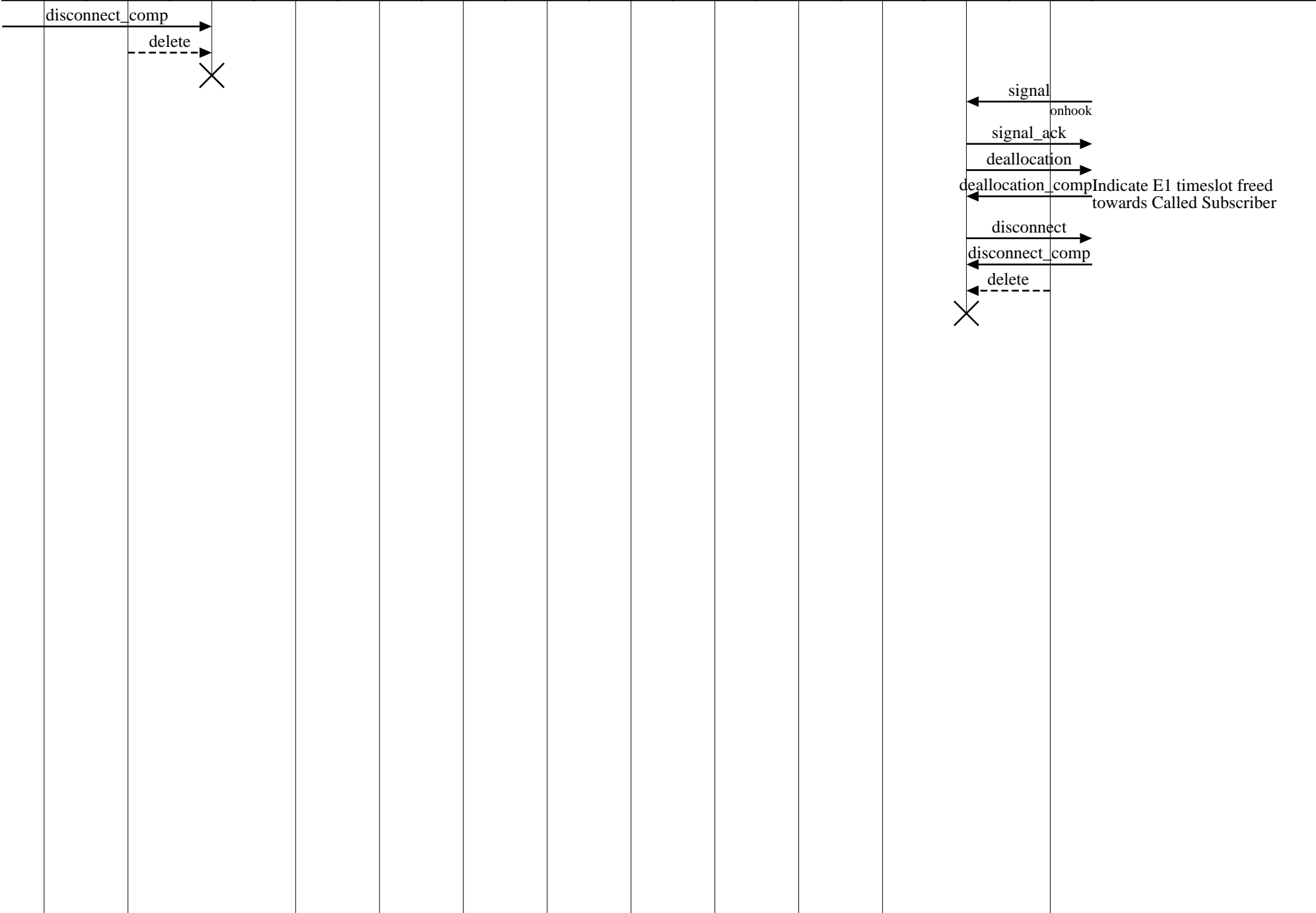
xen2

dsp1 | v5 mgr1 | v5 call1 | E1 mgr1 | ts mgr1 | tone mgr1 | rout mgr | ss mgr | tone mgr2 | ts mgr2 | E1 mgr2 | v5 call2 | v5 mgr2

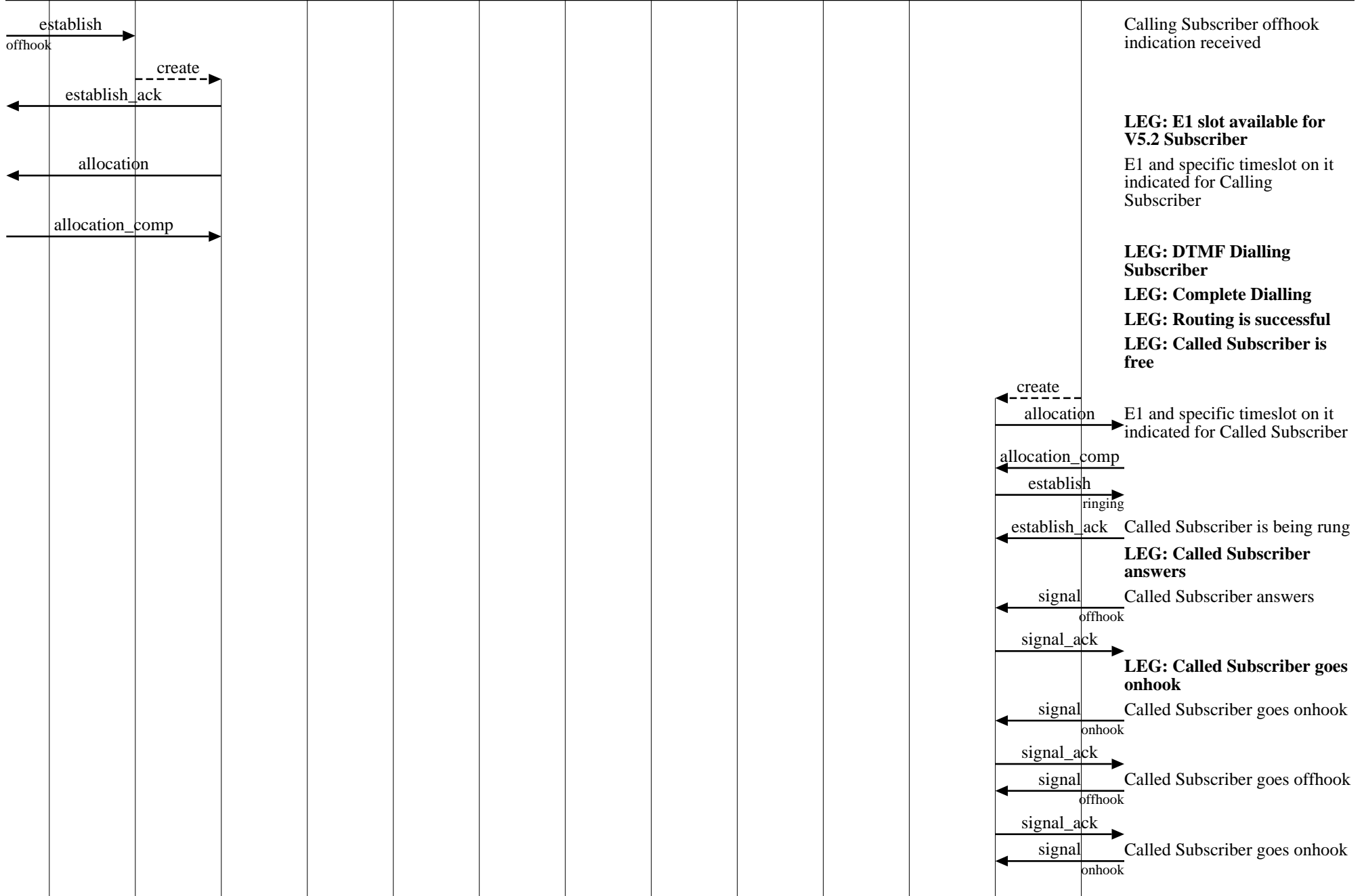
22-Oct-00 19:27 (Page 1)

Copyright (c) 2000 EventHelix.com. All Rights Reserved.





Copyright (c) 2000 EventHelix.com. All Rights Reserved.



Calling Subscriber offhook indication received

LEG: E1 slot available for V5.2 Subscriber

E1 and specific timeslot on it indicated for Calling Subscriber

LEG: DTMF Dialling Subscriber

LEG: Complete Dialling

LEG: Routing is successful

LEG: Called Subscriber is free

E1 and specific timeslot on it indicated for Called Subscriber

Called Subscriber is being rung

LEG: Called Subscriber answers

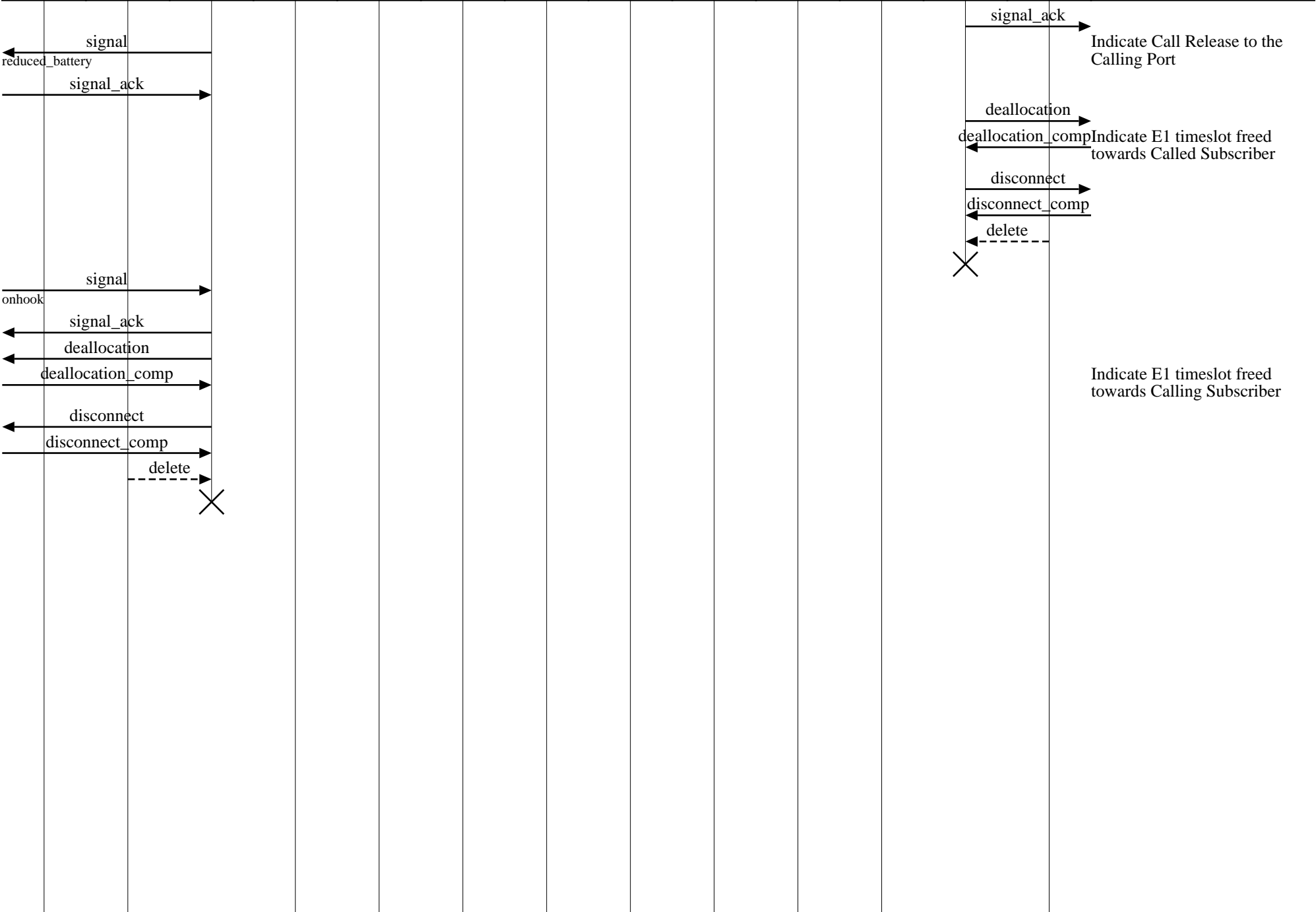
Called Subscriber answers

LEG: Called Subscriber goes onhook

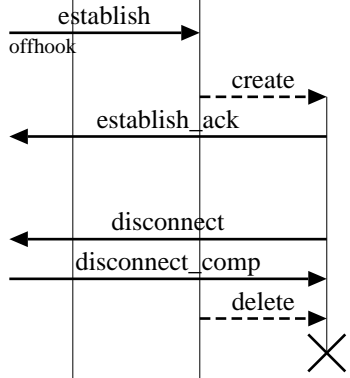
Called Subscriber goes onhook

Called Subscriber goes offhook

Called Subscriber goes onhook



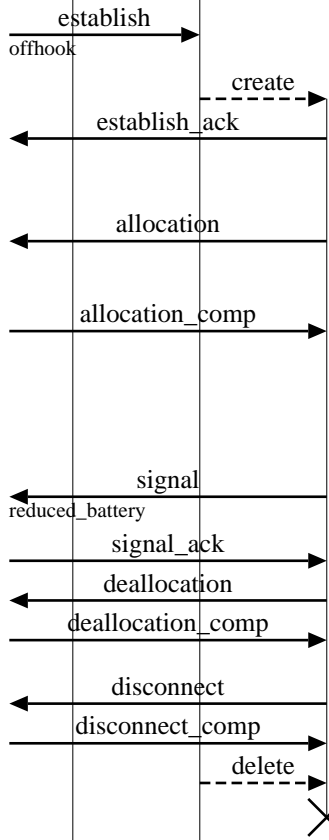
Copyright (c) 2000 EventHelix.com. All Rights Reserved.



Calling Subscriber offhook
indication received

**LEG: E1 slot not available
for V5.2 Subscriber**
Call failure indicated in V5.2

Copyright (c) 2000 EventHelix.com. All Rights Reserved.



Calling Subscriber offhook indication received

LEG: E1 slot available for V5.2 Subscriber

E1 and specific timeslot on it indicated for Calling Subscriber

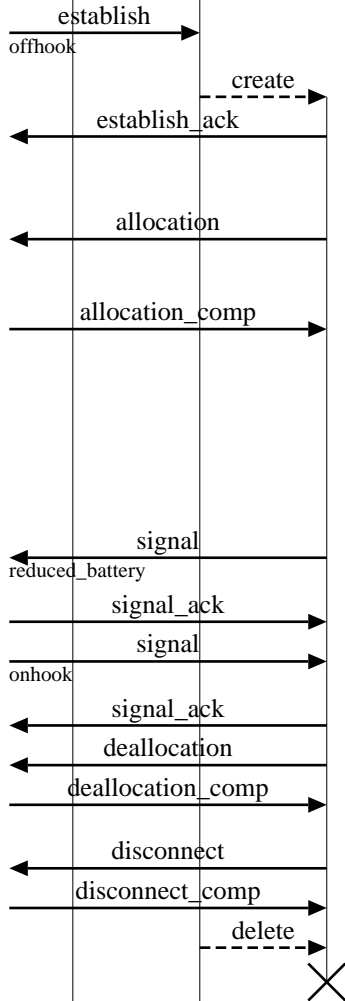
LEG: DTMF Dialling Subscriber

LEG: No Dialling or Partial Dialling

Indicate Call Release to Calling Port

Indicate E1 timeslot freed towards Calling Subscriber

Copyright (c) 2000 EventHelix.com. All Rights Reserved.



Calling Subscriber offhook indication received

LEG: E1 slot available for V5.2 Subscriber

E1 and specific timeslot on it indicated for Calling Subscriber

LEG: DTMF Dialling Subscriber

LEG: Complete Dialling

LEG: Call failed: DN unknown or All trunks to the Route are busy

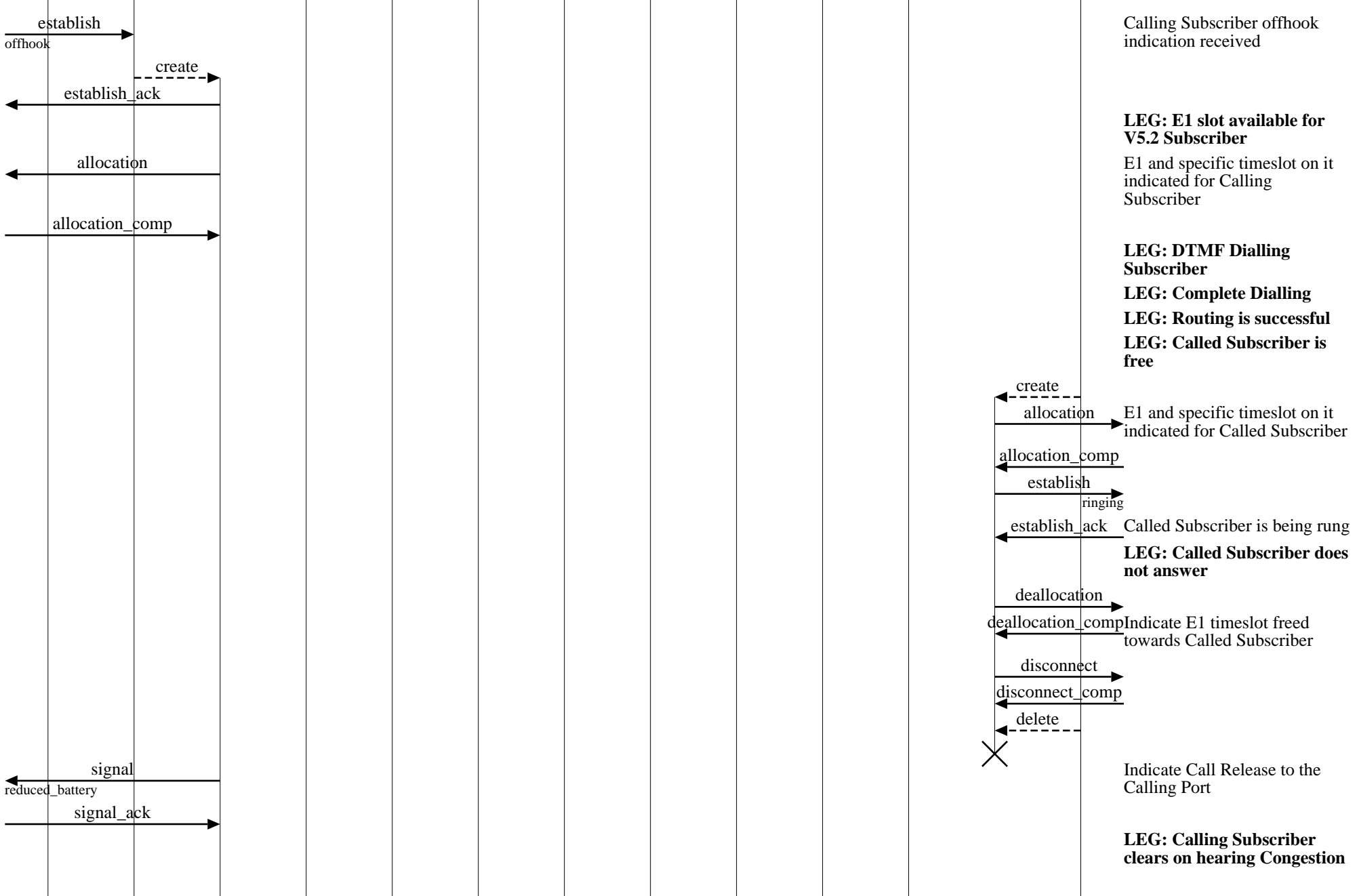
Indicate Call Release to the Calling Port

Indicate E1 timeslot freed towards Calling Subscriber

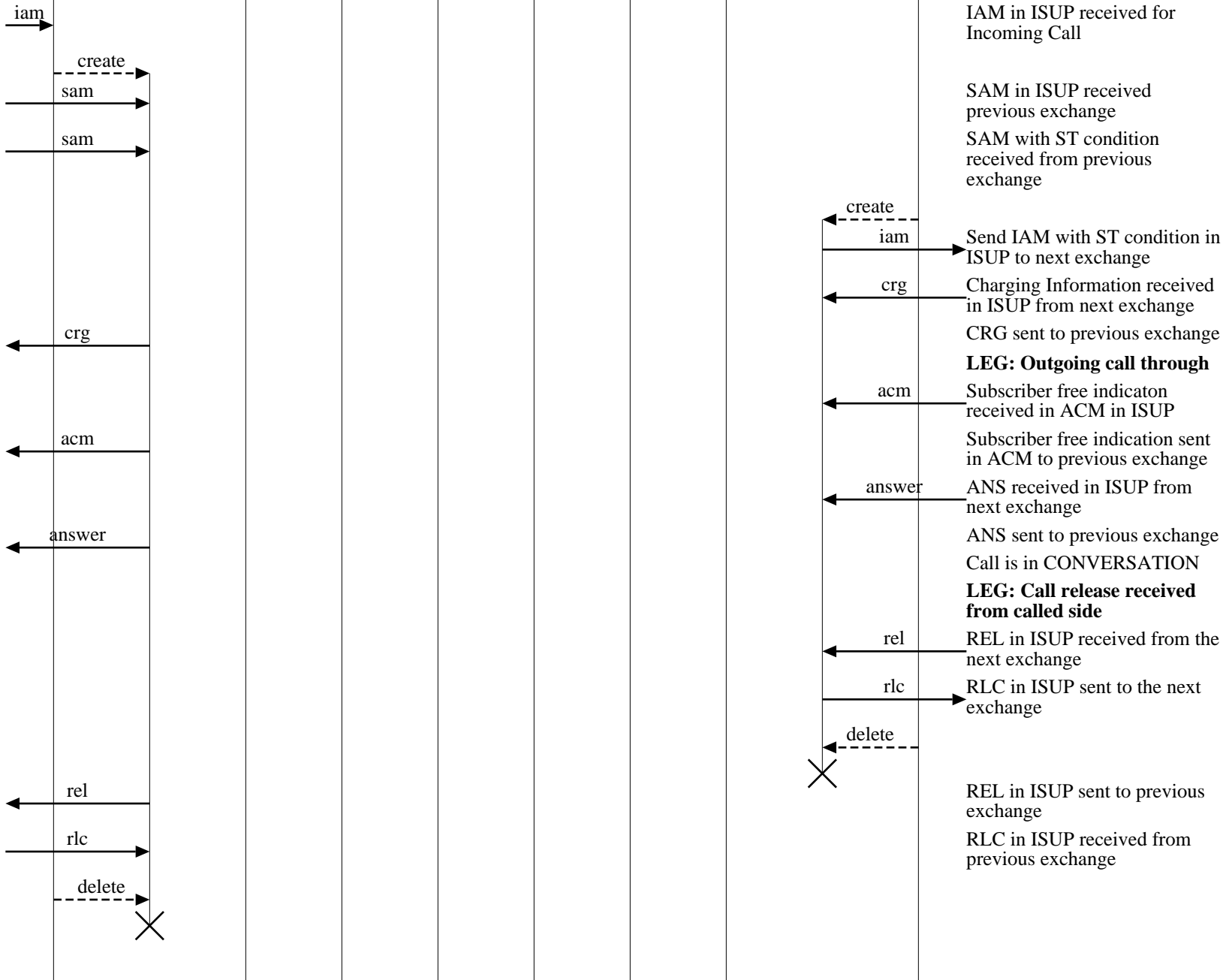
Env Interfaces (V5.2: Called subscriber does not answer)

xenon												EventStudio 1.0.2
xen1						cas		xen2				22-Oct-00 19:27 (Page 9)
dsp1	v5 mgr1	v5 call1	E1 mgr1	ts mgr1	tone mgr1	rout mgr	ss mgr	tone mgr2	ts mgr2	E1 mgr2	v5 call2	v5 mgr2

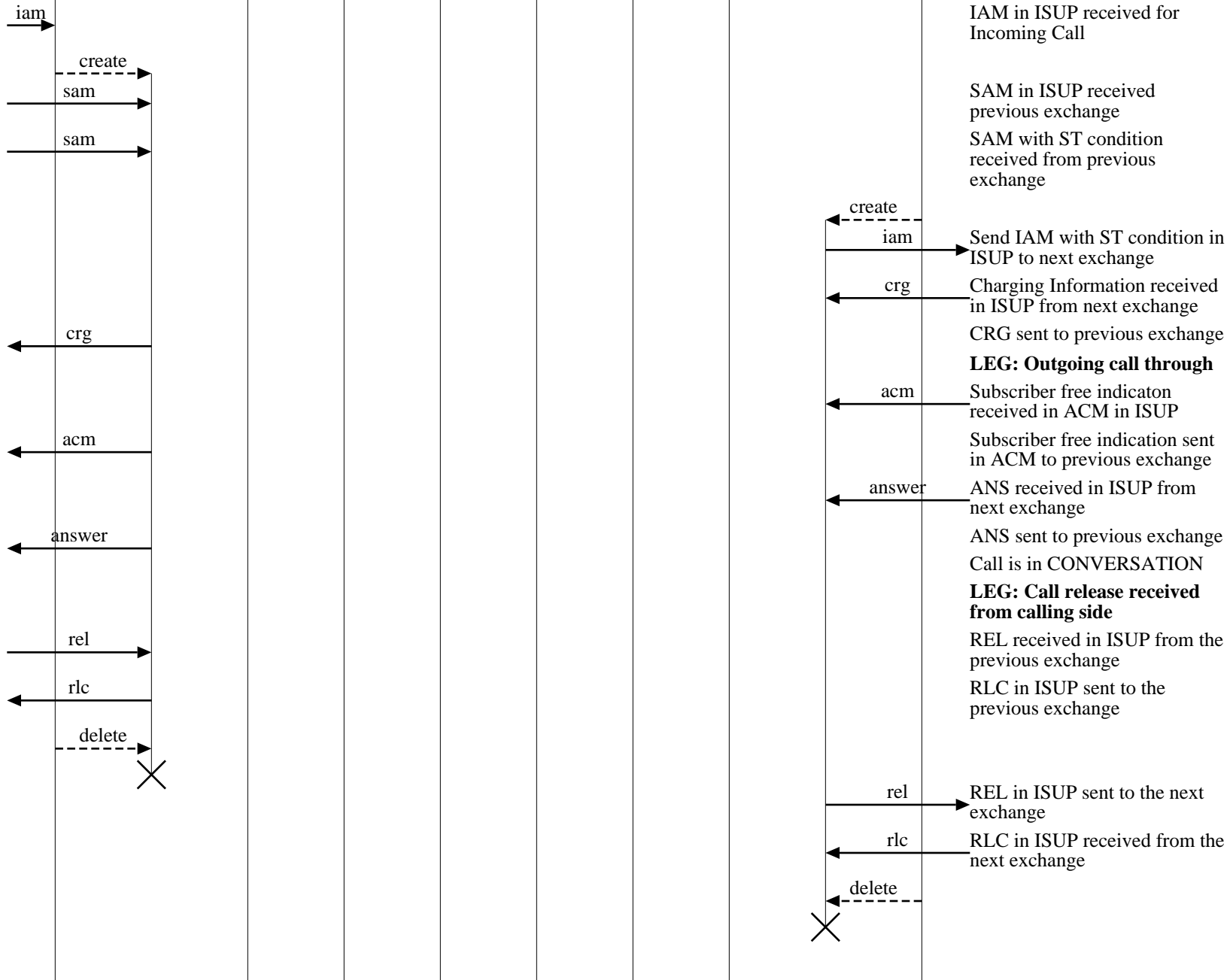
Copyright (c) 2000 EventHelix.com. All Rights Reserved.



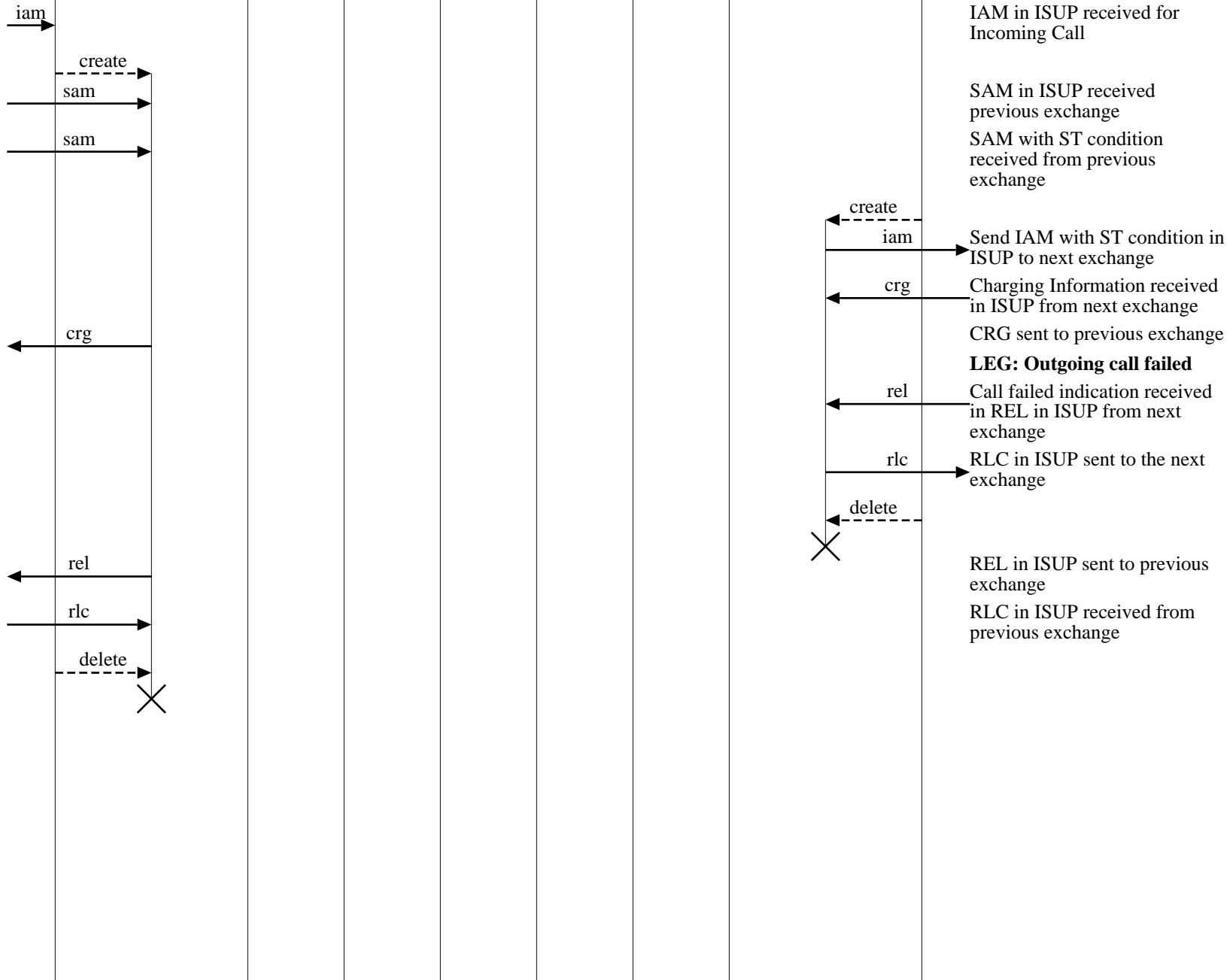
Copyright (c) 2000 EventHelix.com. All Rights Reserved.



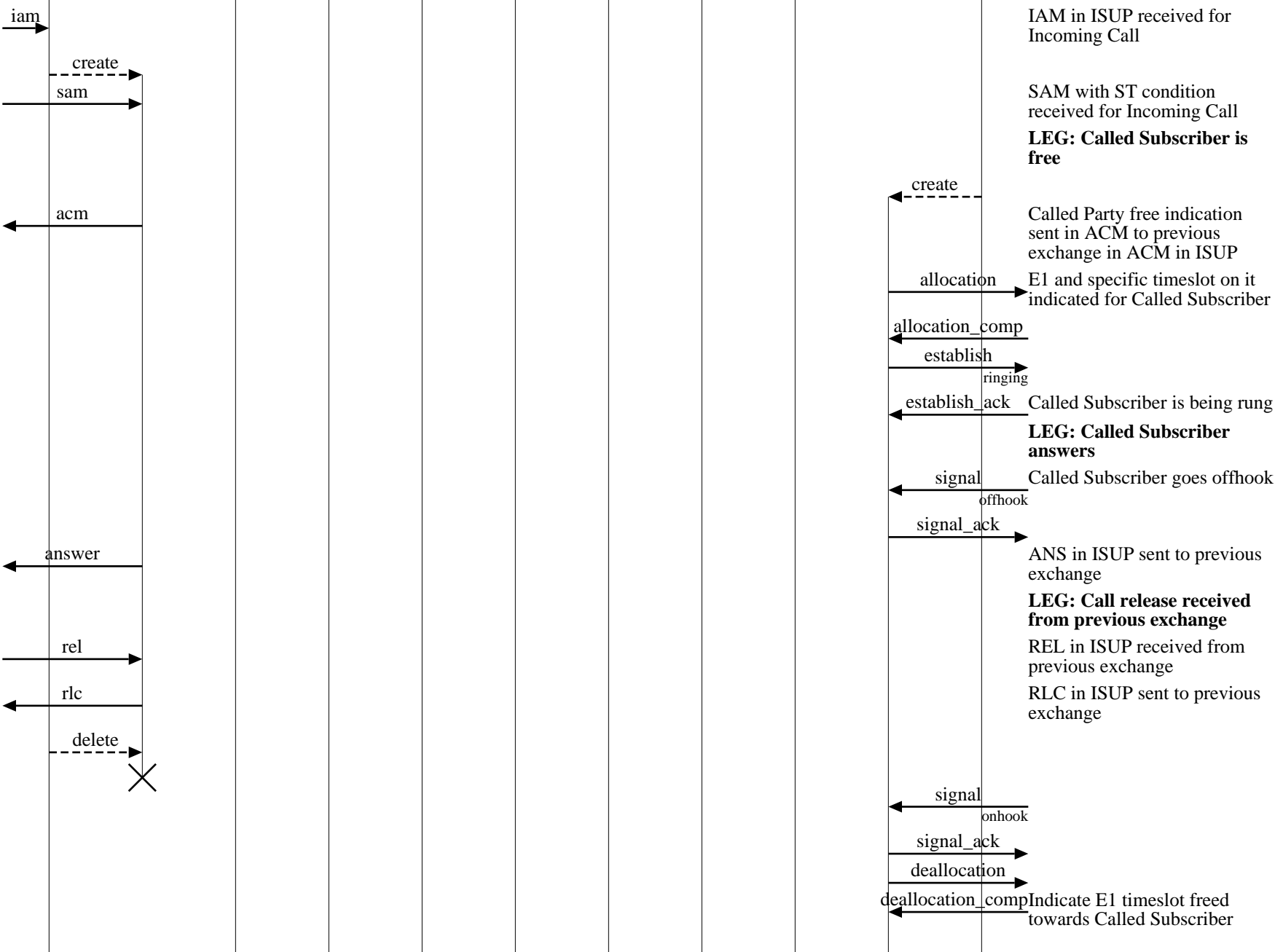
Copyright (c) 2000 EventHelix.com. All Rights Reserved.



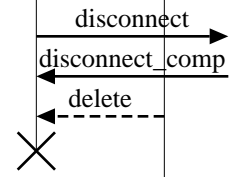
Copyright (c) 2000 EventHelix.com. All Rights Reserved.



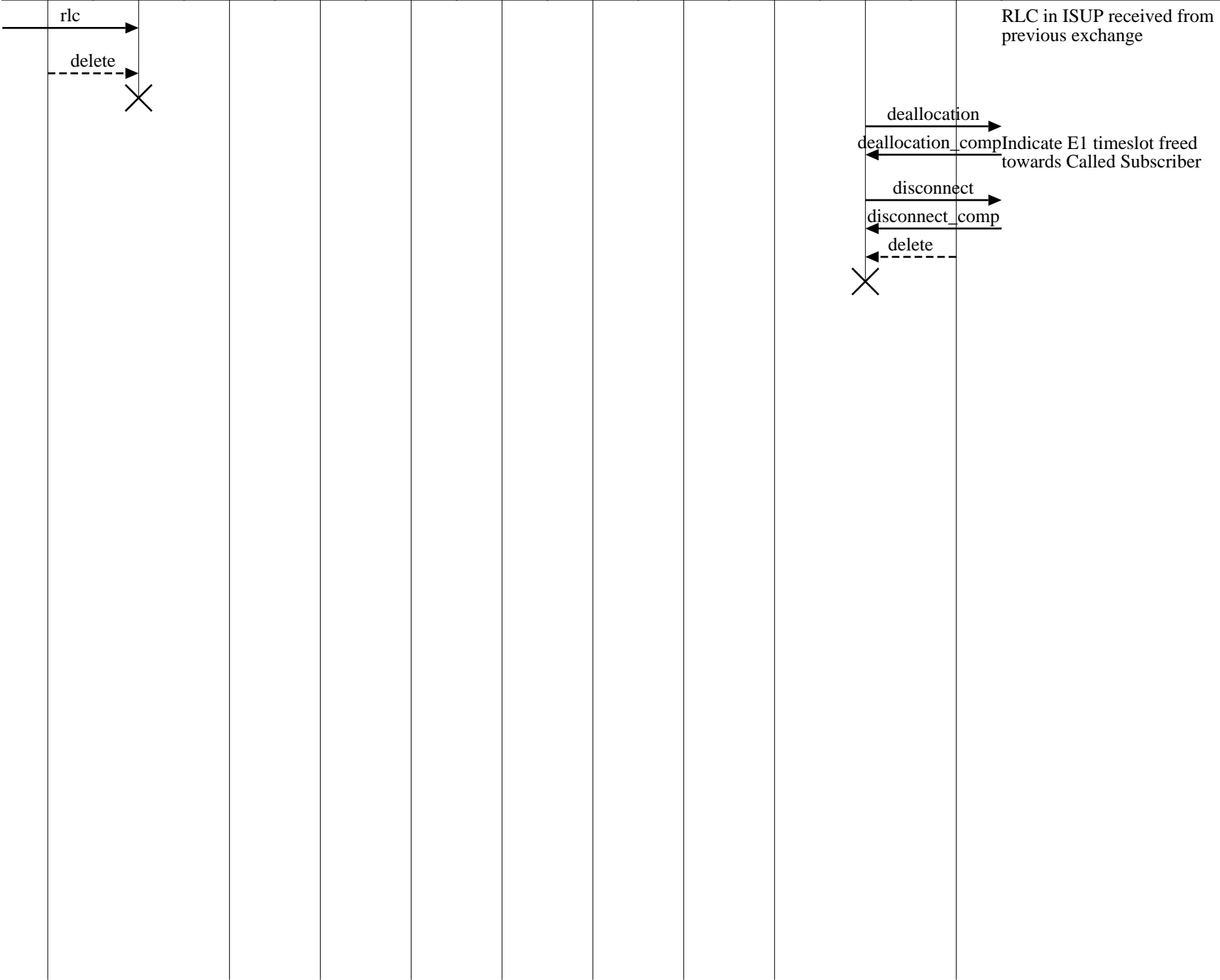
Copyright (c) 2000. EventHelix.com. All Rights Reserved.



Env Interfaces (ISUP - V5.2: Successful call)											
xenon										EventStudio 1.0.2	
xen1				cas		xen2					22-Oct-00 19:27 (Page 15)
isup mgr1	isup call1	ts mgr1	tone mgr1	rout mgr	ss mgr	tone mgr2	ts mgr2	E1 mgr2	v5 call2	v5 mgr2	

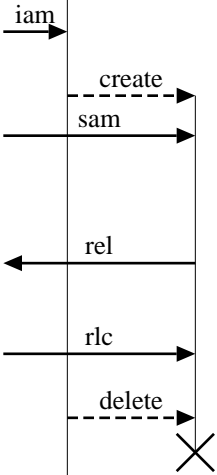


Env Interfaces (ISUP - V5.2: CSH timeout)											
xenon										EventStudio 1.0.2	
xen1				cas		xen2					22-Oct-00 19:27 (Page 17)
isup mgr1	isup call1	ts mgr1	tone mgr1	rout mgr	ss mgr	tone mgr2	ts mgr2	E1 mgr2	v5 call2	v5 mgr2	



Env Interfaces (ISUP - V5.2: Outgoing call failed)											
xenon										EventStudio 1.0.2	
xen1			cas		xen2					22-Oct-00 19:27 (Page 18)	
isup mgr1	isup call1	ts mgr1	tone mgr1	rout mgr	ss mgr	tone mgr2	ts mgr2	E1 mgr2	v5 call2	v5 mgr2	

Copyright (c) 2000. EventHelix.com. All Rights Reserved.



IAM in ISUP received for Incoming Call

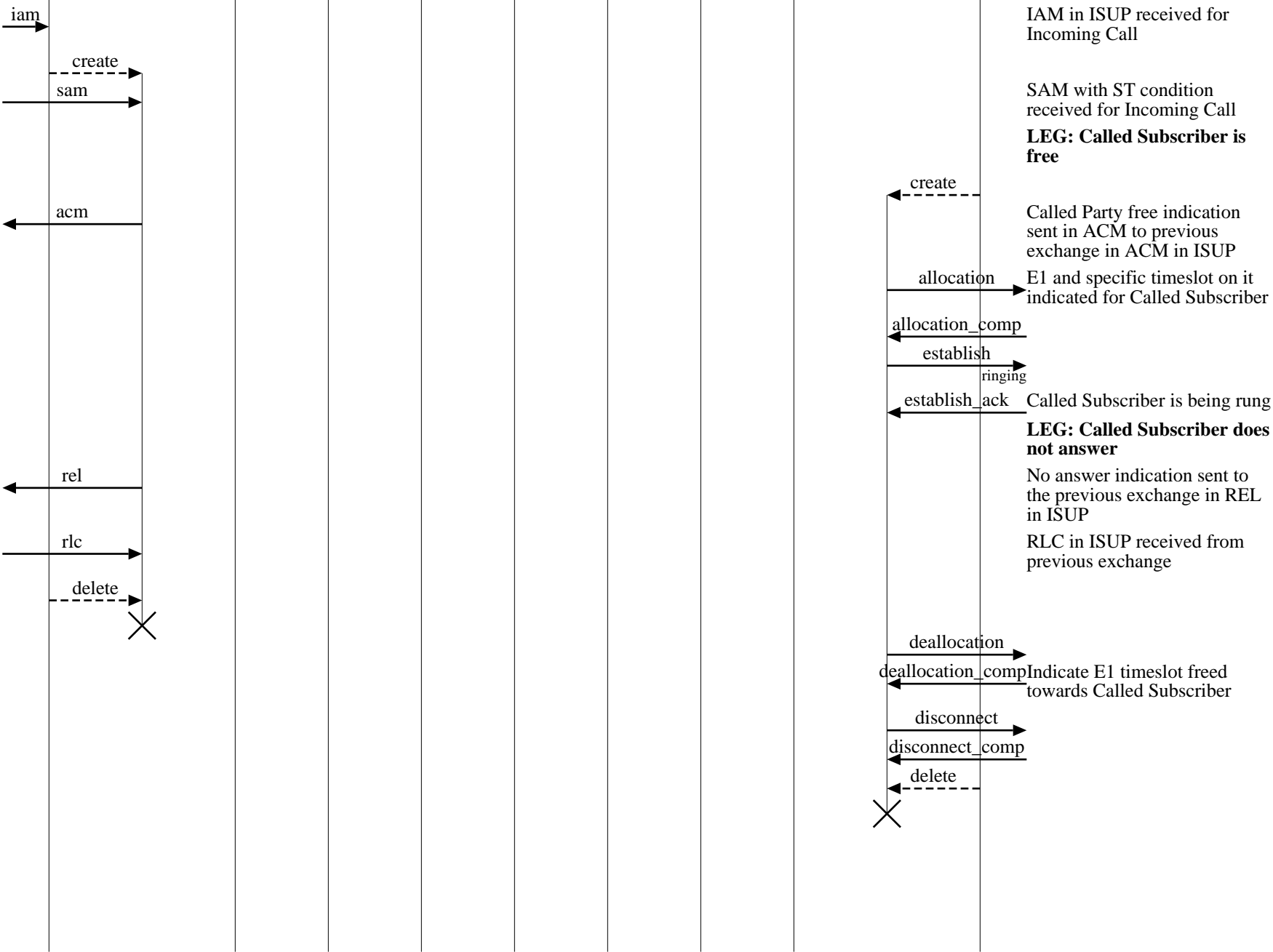
SAM with ST condition received for Incoming Call

LEG: Called Subscriber is busy

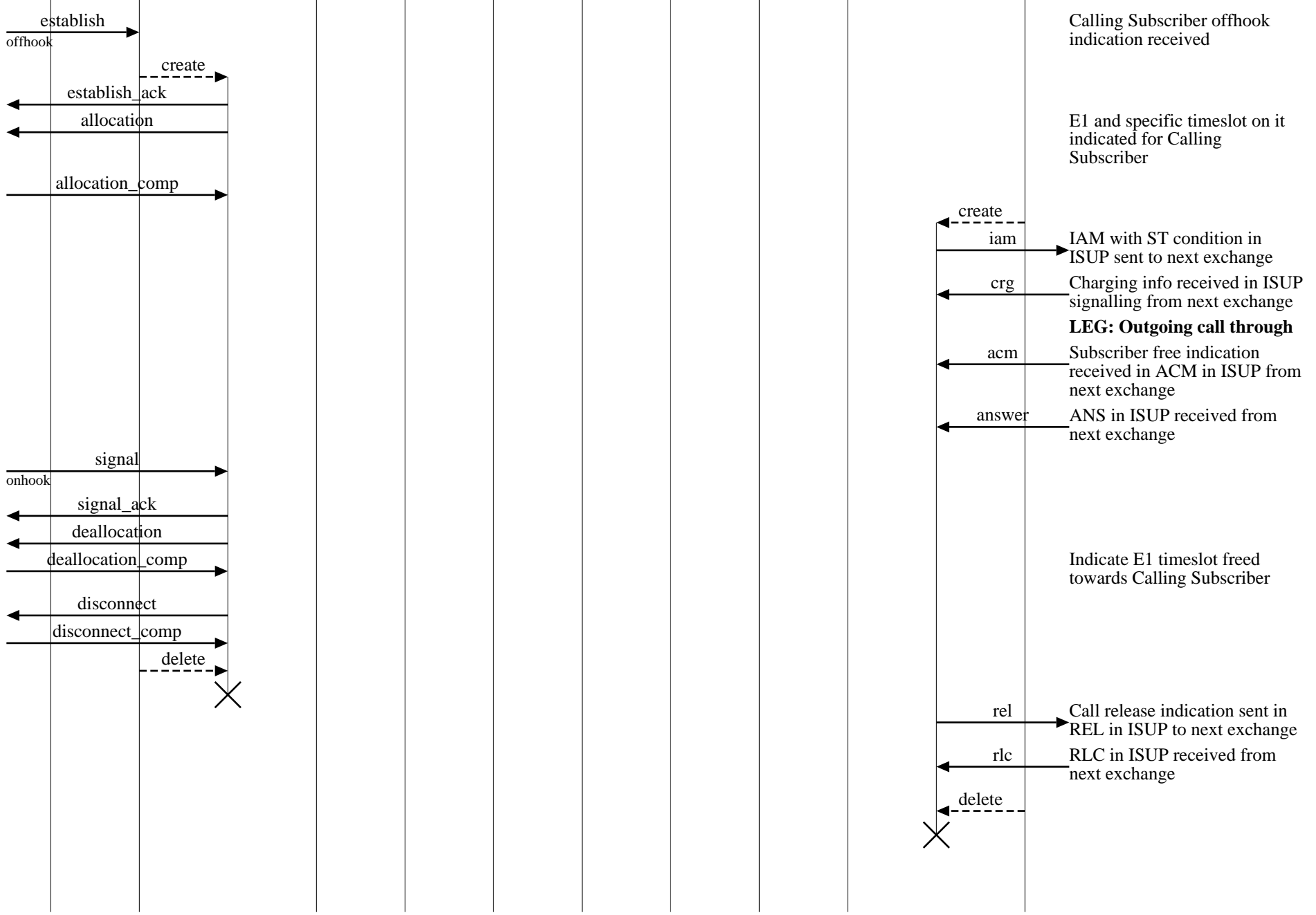
Called Party busy indication sent to the previous exchange in REL in ISUP

RLC in ISUP received from previous exchange

Copyright (c) 2000. EventHelix.com. All Rights Reserved.



Copyright (c) 2000. EventHelix.com. All Rights Reserved.



Env Interfaces (V5.2 - ISUP: Outgoing call failed)

xenon

EventStudio 1.0.2

xen1

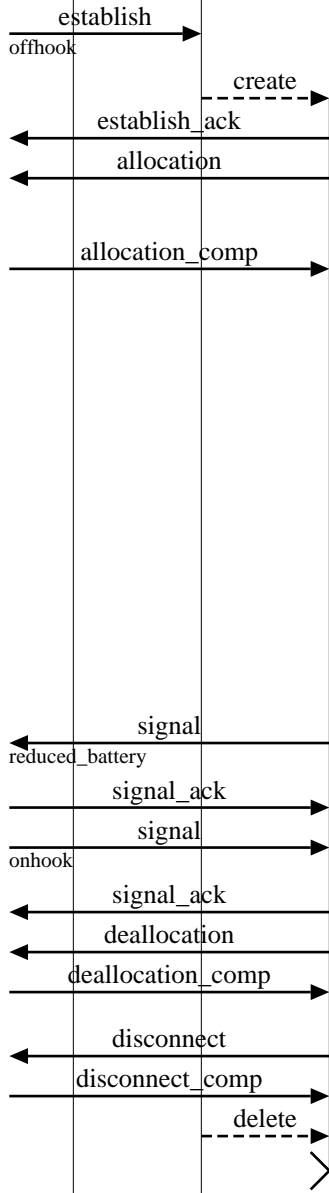
cas

xen2

dsp1 | v5 mgr1 | v5 call1 | E1 mgr1 | ts mgr1 | tone mgr1 | rout mgr | ss mgr | ts mgr2 | tone mgr2 | isup call2 | isup mgr2

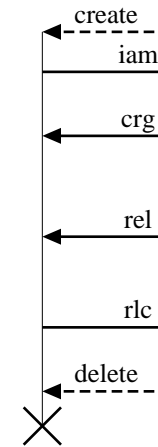
22-Oct-00 19:27 (Page 21)

Copyright (c) 2000. EventHelix.com. All Rights Reserved.



Calling Subscriber offhook indication received

E1 and specific timeslot on it indicated for Calling Subscriber



IAM with ST condition in ISUP sent to next exchange

Charging info received in ISUP signalling from next exchange

LEG: Outgoing call failed

REL in ISUP due to Called Subscriber being busy received from next exchange

RLC in ISUP sent to next exchange

Indicate Call Release to the Calling Port

Indicate E1 timeslot freed towards Calling Subscriber