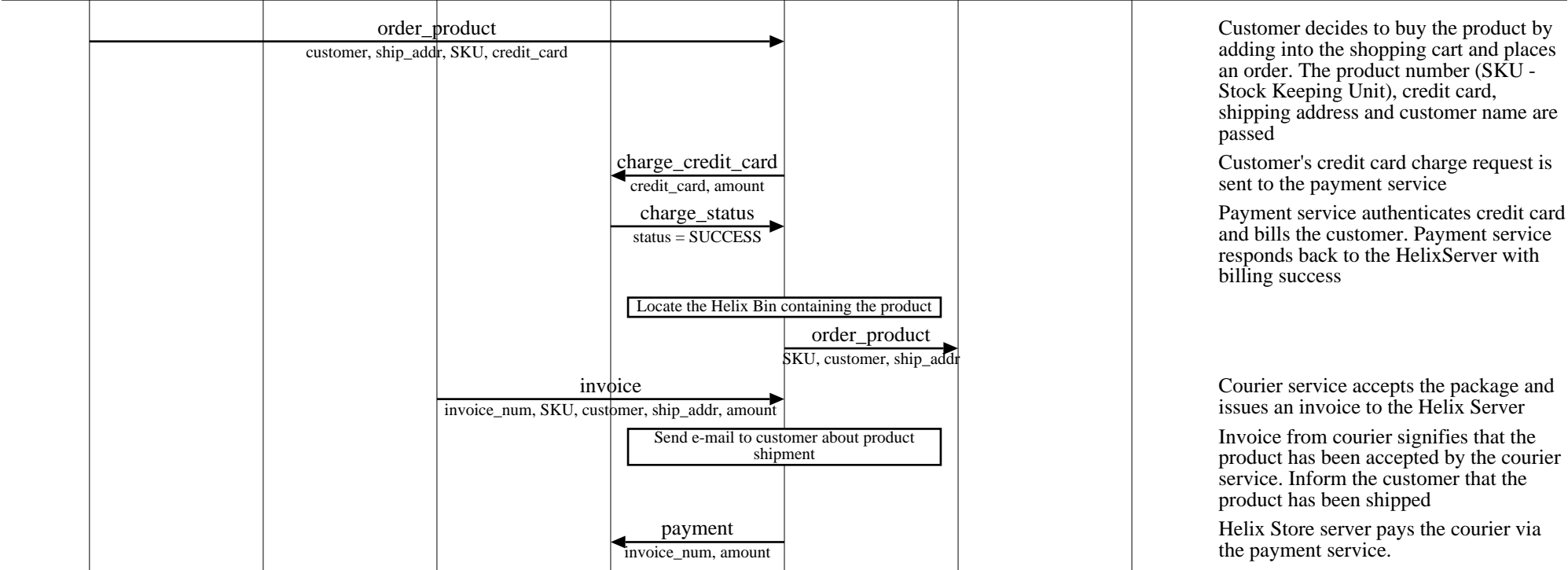


Server Interfaces (Customer Purchases a Product)							
internet				helix store			EventHelix.com/EventStudio 2.0
customer	manufacturer	courier	payment service	helix server	helix bin	helix router	
customer	manufacturer	courier	payment service	server	bin	router	05-Jul-03 11:23 (Page 1)

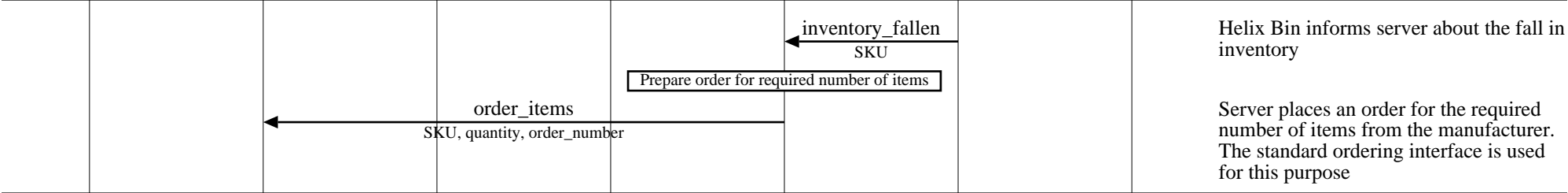
Copyright © 2000-2003 EventHelix.com Inc. All Rights Reserved.



Product package is shipped to the final destination

Server Interfaces (HelixStore Replenishes Inventory)							
internet				helix store			EventHelix.com/EventStudio 2.0
customer	manufacturer	courier	payment service	helix server	helix bin	helix router	05-Jul-03 11:23 (Page 2)
customer	order service	courier	payment service	server	bin	router	

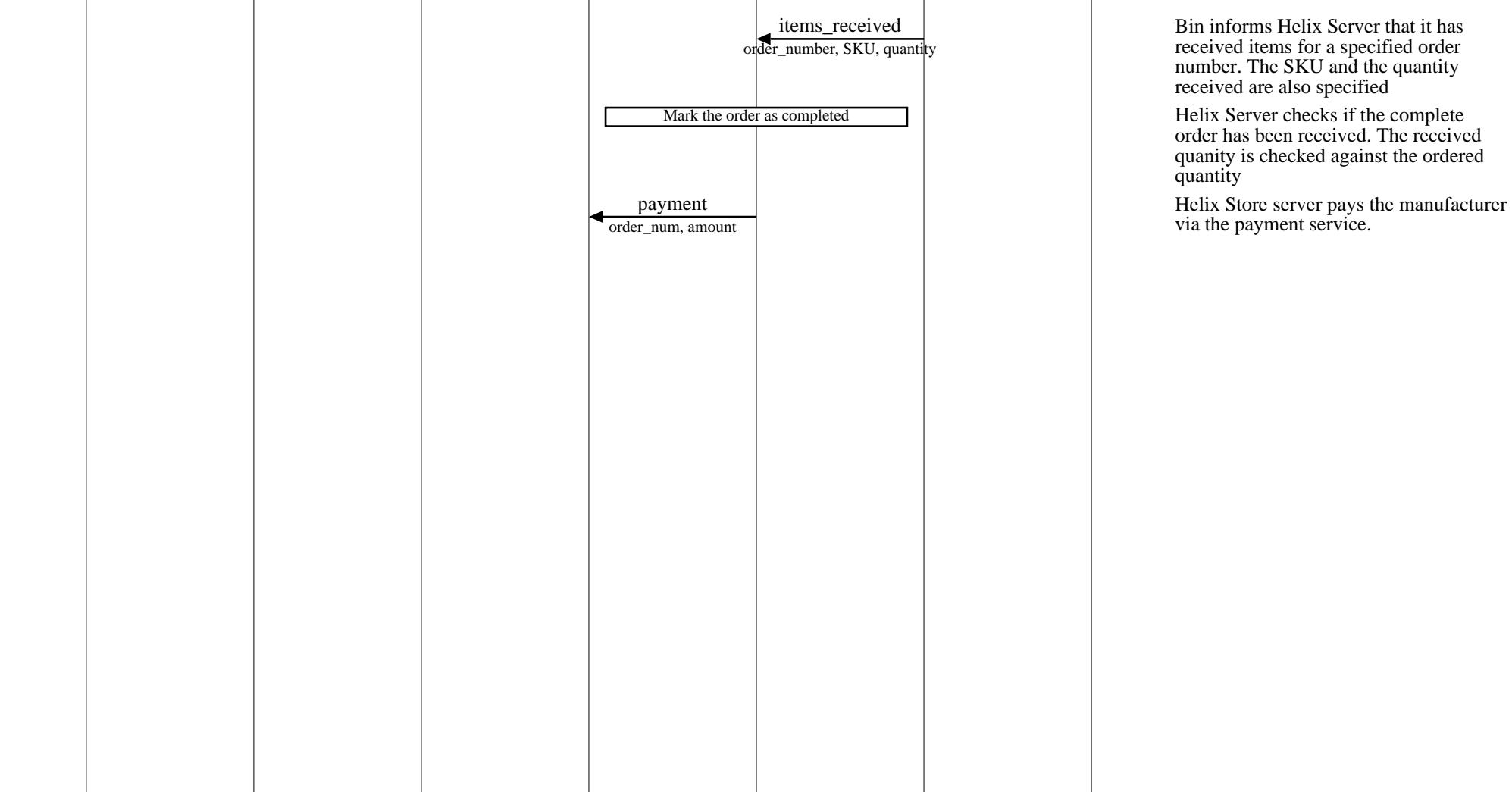
Copyright © 2000-2003 EventHelix.com Inc. All Rights Reserved.



Helix Bin informs server about the fall in inventory

Server places an order for the required number of items from the manufacturer. The standard ordering interface is used for this purpose

Ordered items reach the final destination



Bin informs Helix Server that it has received items for a specified order number. The SKU and the quantity received are also specified

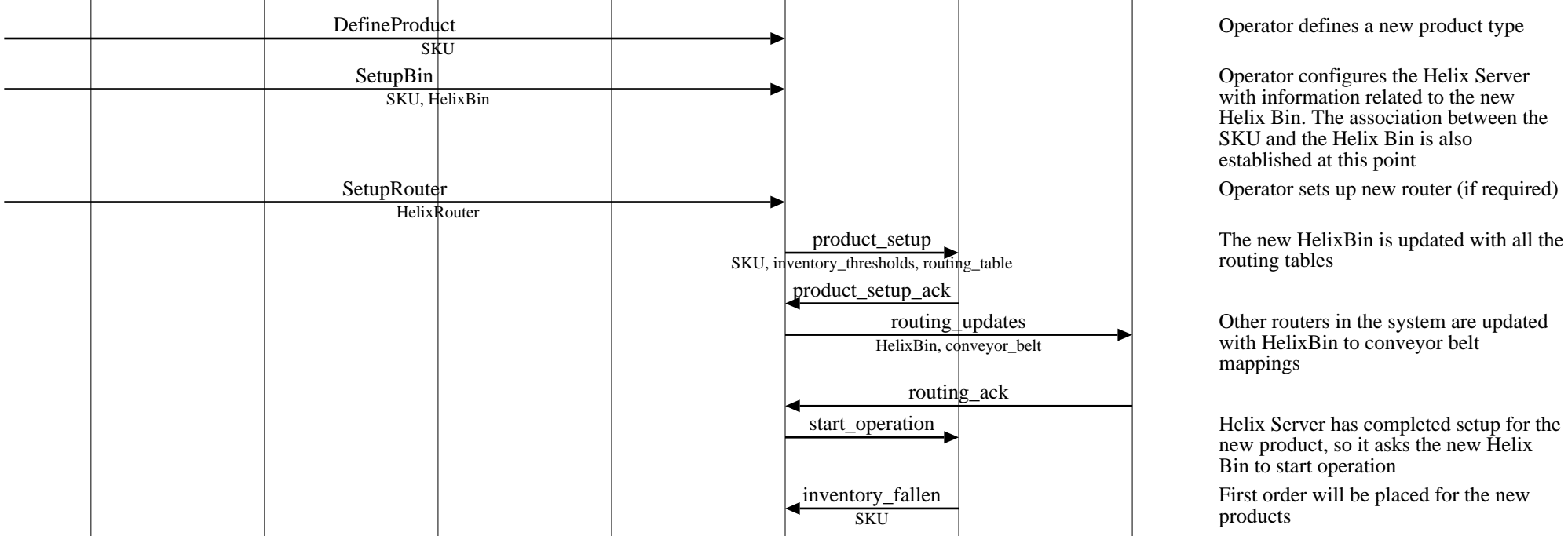
Helix Server checks if the complete order has been received. The received quantity is checked against the ordered quantity

Helix Store server pays the manufacturer via the payment service.

Server Interfaces (Adding a New Product to HelixStore)							
internet				helix store			EventHelix.com/EventStudio 2.0
customer	manufacturer	courier	payment service	helix server	helix bin	helix router	
customer	manufacturer	courier	payment service	server	bin	router	05-Jul-03 11:23 (Page 3)

Management decides to add a new product to HelixStore. Management also decides if the product will be classified as fast moving or slow moving.  
 Copyright © 2000-2003 EventHelix.com Inc. All Rights Reserved.

Connect Helix Bin and Helix Router to the HelixStore network



HelixStore is now ready to receive orders for the new product

The standard inventory replenishment procedure will fill up the Bin as soon as the manufacturers ship products