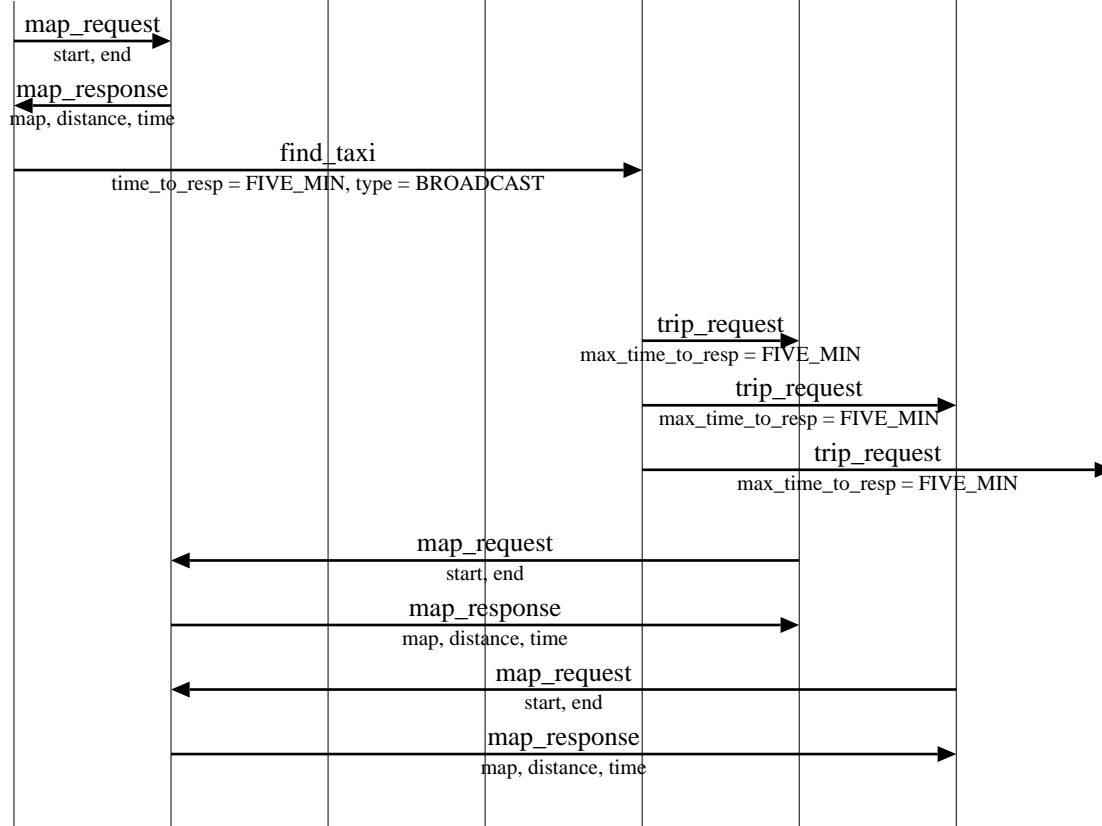


Web_services Interfaces (Taxi available within 5 min.)										
web	website		web services				wireless web			EventHelix.com/EventStudio 2.0
customer	web server		mapping service	billing service	bank ac service	mobile msg service	taxi pda1	taxi pda2	taxi pda3	
customer	session mgr	taxi session	mapping service	billing service	bank ac service	mobile msg service	taxi mgr1	taxi mgr2	taxi mgr3	05-Jul-03 16:41 (Page 1)

Copyright © 2000-2003 EventHelix.com Inc. All Rights Reserved.



Application requests the map from the source to destination

Mapping service returns the map, distance and time for the journey

Send broadcast message to Taxis in the WebTaxi system to determine Taxis that are 5 min. away from source. The broadcast message contains source and destination of the Trip

Taxi1 is a Free Taxi

Taxi2 is a Busy Taxi

Taxi3 is Busy and it already has a pending request, so it ignores the trip request

Request the detailed route from starting point to end point

Mapping service responds with map, distance and time

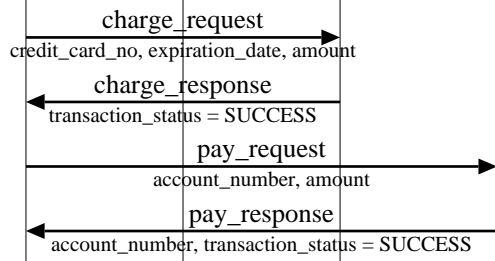
Request the detailed route from starting point to end point

Mapping service responds with map, distance and time

LEG: Response in Five Minutes

The Taxi is going towards the starting point.

Taxi is serving the customer and is moving towards the destination



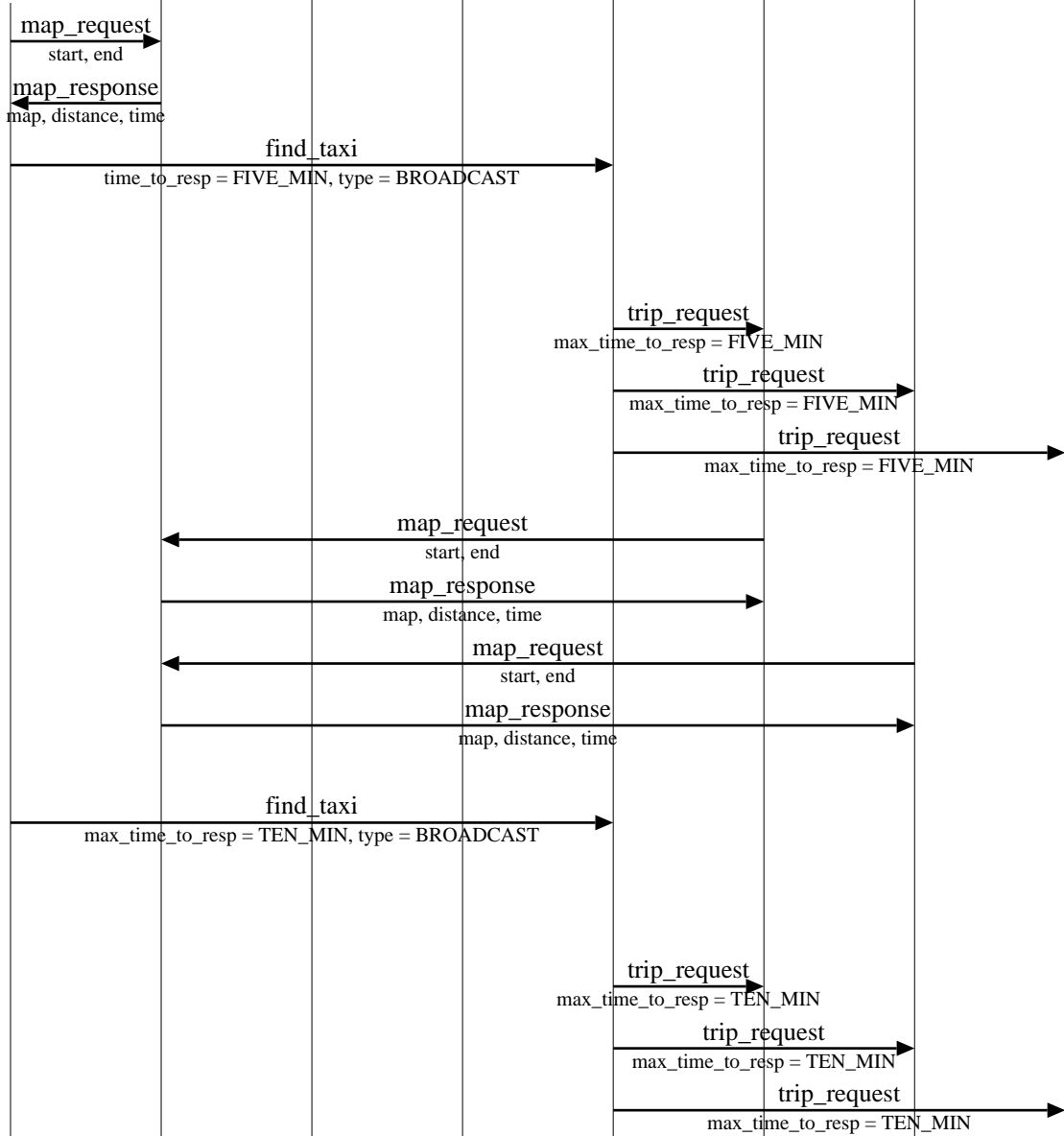
Customers credit card is changed at this point

Bill service bills the customer and responds back with the status

Deposite money in the Taxi Driver's bank account

Web_services Interfaces (Taxi available within 10 min.)										
web	website		web services				wireless web			EventHelix.com/EventStudio 2.0
customer	web server		mapping service	billing service	bank ac service	mobile msg service	taxi pda1	taxi pda2	taxi pda3	
customer	session mgr	taxi session	mapping service	billing service	bank ac service	mobile msg service	taxi mgr1	taxi mgr2	taxi mgr3	05-Jul-03 16:41 (Page 2)

Copyright © 2000-2003 EventHelix.com Inc. All Rights Reserved.



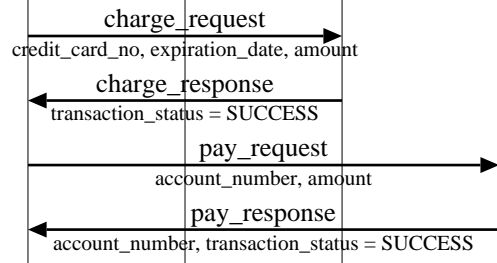
Application requests the map from the source to destination
 Mapping service returns the map, distance and time for the journey
 Send broadcast message to Taxis in the WebTaxi system to determine Taxis that are 5 min. away from source. The broadcast message contains source and destination of the Trip
 Taxi1 is a Free Taxi
 Taxi2 is a Busy Taxi
 Taxi3 is Busy and it already has a pending request, so it ignores the trip request
 Request the detailed route from starting point to end point
 Mapping service responds with map, distance and time
 Request the detailed route from starting point to end point
 Mapping service responds with map, distance and time
LEG: Response in Ten Minutes
 Send broadcast message to Taxis in the WebTaxi system to determine Taxis that can reach the starting point within ten minutes. The broadcast message contains source and destination of the Trip
 Taxi1 is a Free Taxi
 Taxi2 is a Busy Taxi
 Taxi3 is a Busy and Booked Taxi

The Taxi is finishing its current service.

Web_services Interfaces (Taxi available within 10 min.)										
web	website		web services				wireless web			EventHelix.com/EventStudio 2.0
customer	web server		mapping service	billing service	bank ac service	mobile msg service	taxi pda1	taxi pda2	taxi pda3	
customer	session mgr	taxi session	mapping service	billing service	bank ac service	mobile msg service	taxi mgr1	taxi mgr2	taxi mgr3	05-Jul-03 16:41 (Page 3)

The Taxi is going towards the starting point.

Taxi is serving the customer and is moving towards the destination



Customers credit card is changed at this point
 Bill service bills the customer and responds back with the status
 Deposite money in the Taxi Driver's bank account