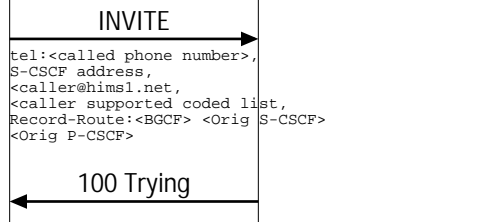


MGCF Interfaces (IMS-PSTN(ISUP) Call; Megaco/H.248 Signaling; IMS Caller Initiated Call Release)						
Calling UE	IMS Core Network		PSTN Interface			EventStudio System Designer 4.0
Caller User Equipment	Visited IMS	Home IMS	Signaling		Media	25-Feb-08 07:56 (Page 1)
Caller	Orig P-CSCF	Orig S-CSCF	BGCF	MGCF	IM-MGW	

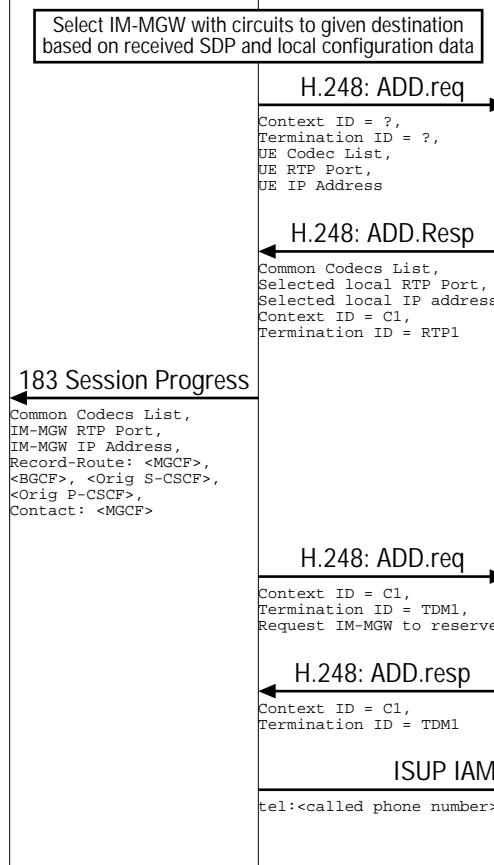
LEG: Detailed IMS to PSTN(ISUP) Call Setup

IMS to PSTN Call Routing via BGCF



The BGCF selects MGCF in the same network to route the call to the PSTN network. The BGCF forwards the INVITE to MGCF but it does not add itself to the Record-Route header, as it has no need to remain in the signaling path once the session is established.

IM-MGW Initial Setup



MGCF selects IM-MGW to reserve outgoing channel towards the PSTN called party.

MGCF requests the IM-MGW for a new context. The UE codec, IP address and RTP port number is specified in the message.

The IM-MGW responds with the allocated context, the common codecs, the local IP address and the RTP port.

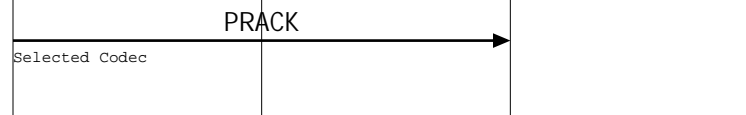
The MGCF returns the media stream capabilities of the destination along the signaling path in a "183 Session Progress". The IM-MGW "Common Codec List", IP address and the RTP port number are included in the message.

Now the MGCF requests the IM-MGW for a circuit switched port towards the PSTN network. Note that the this termination is being requested for the Context C1 that was setup for the RTP connection.

IM-MGW responds with the circuit switched termination TDM1.

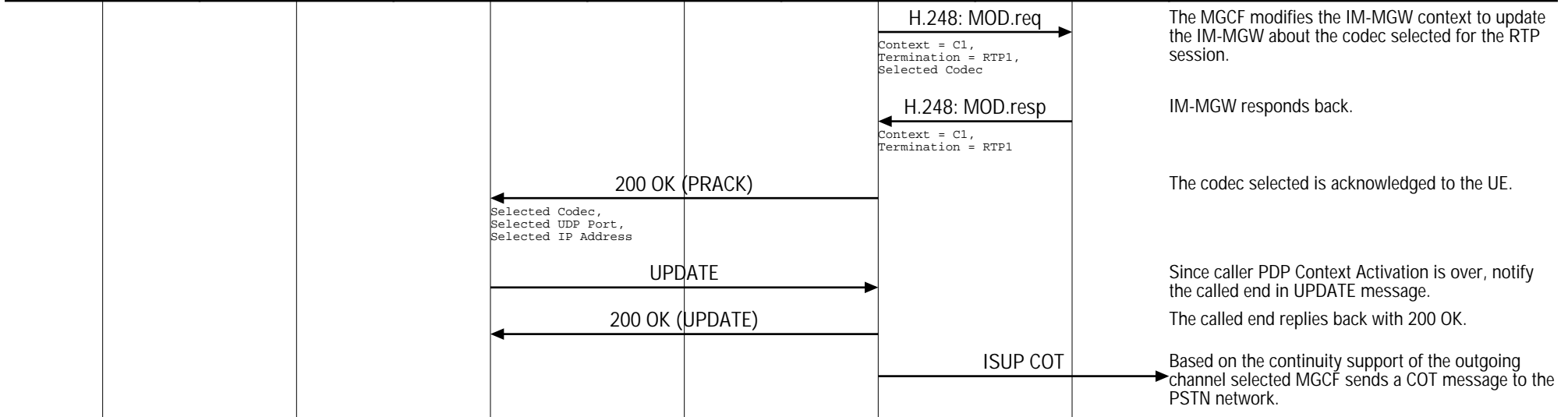
The MGCF sends IAM, containing the called party phone number digits, towards PSTN termination. The TDM-1 circuit information obtained from the IM-MGW is included in the message.

Caller Media PDP Context Activation

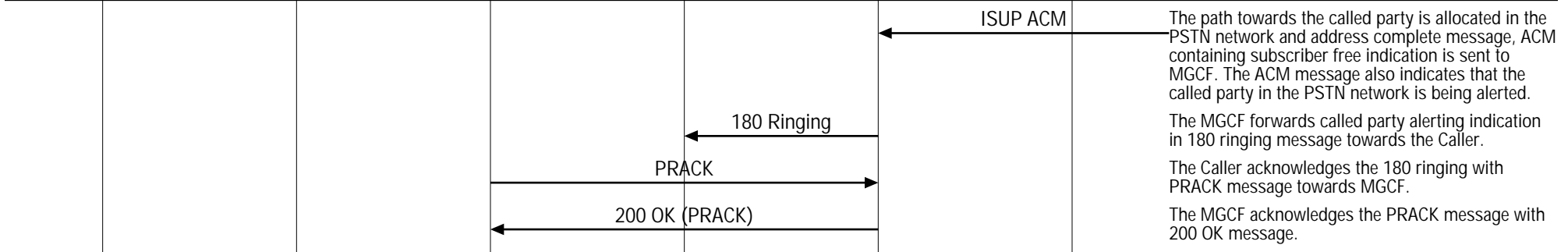


The Caller confirms the codec selection in PRACK towards MGCF.

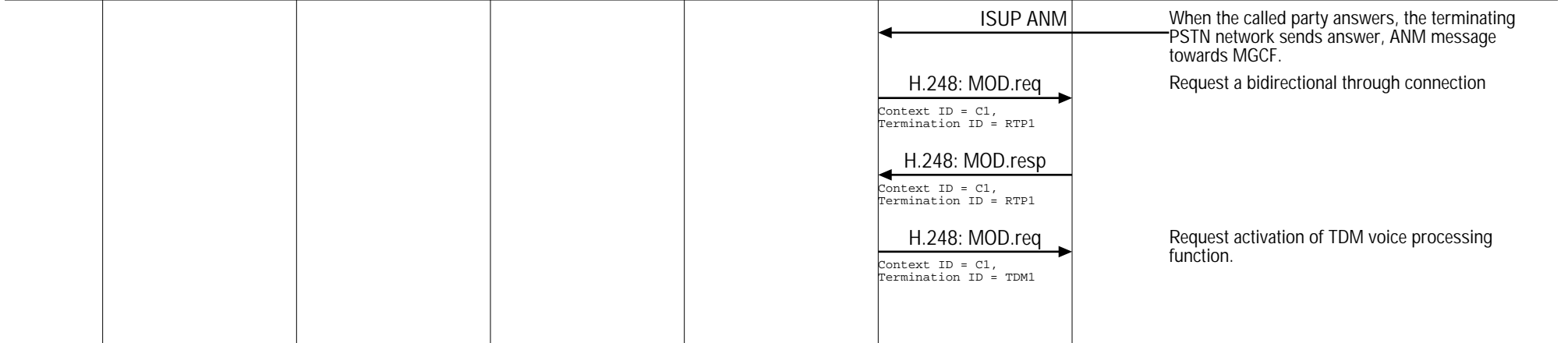
MGCF Interfaces (IMS-PSTN(ISUP) Call; Megaco/H.248 Signaling; IMS Caller Initiated Call Release)						
Calling UE	IMS Core Network		PSTN Interface			EventStudio System Designer 4.0
Caller User Equipment	Visited IMS	Home IMS	Signaling		Media	25-Feb-08 07:56 (Page 2)
Caller	Orig P-CSCF	Orig S-CSCF	BGCF	MGCF	IM-MGW	



Ringling



Conversation Mode



MGCF Interfaces (IMS-PSTN(ISUP) Call; Megaco/H.248 Signaling; IMS Caller Initiated Call Release)						
Calling UE	IMS Core Network		PSTN Interface			EventStudio System Designer 4.0
Caller User Equipment	Visited IMS	Home IMS	Signaling		Media	25-Feb-08 07:56 (Page 3)
Caller	Orig P-CSCF	Orig S-CSCF	BGCF	MGCF	IM-MGW	

