

PSTN Subscriber to IMS Subscriber Call (PSTN-ISUP Originated Call; IM-MGW Megaco/H.248 Signaling; PSTN Initiated Release)						
PSTN	IMS Core Network				Called UE	EventStudio System Designer 4.0
PSTN Equipment	PSTN Interface	CSCF Servers			Called User Equipment	
IM-MGW	MGCF	I-CSCF	Term S-CSCF	Term P-CSCF	Called	10-Feb-08 10:59 (Page 1)

This call flow covers the handling of a CS network originated call with ISUP. In the diagram the MGCF requests seizure of the IM CN subsystem side termination and CS network side bearer termination. When the MGCF receives an answer indication, it requests the IM-MGW to both-way through-connect the terminations.

This sequence diagram was generated with EventStudio System Designer 4.0 (<http://www.EventHelix.com/EventStudio>). Copyright © 2008 EventHelix.com Inc. All Rights Reserved. The EventStudio source files for this document can be downloaded from <http://www.eventhelix.com/call-flow/pstn-ims-call.zip>.

**LEG: Detailed PSTN to IMS Call Setup**

**ISUP IAM Handling and Initial IM-MGW and MGCF (Mn) Interactions**



The CS Network establishes a bearer path to the IM-MGW, and signals to the MGCF with a IAM message, giving the trunk identity, destination information and optionally the continuity indication. The message is routed to MGCF via the Signaling Gateway (SGW).

The MGCF selects the IM-MGW based on the received circuit identity in the IAM.

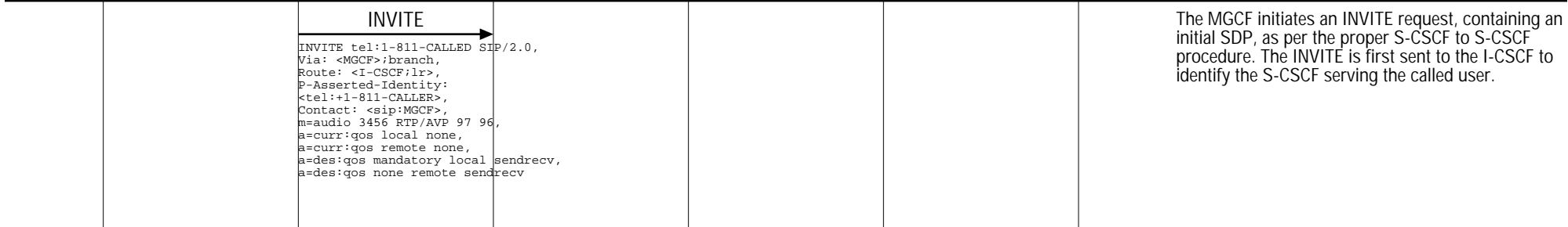
Request addition of a new context and termination. The MGCF uses the Reserve IMS Connection Point procedure. Within this procedure, the MGCF indicates the local codecs and requests a local IP address and UDP port from the IM-MGW. The local IP address and UDP port are used by the IM-MGW to receive user plane data from the IM CN subsystem.

The IM-CN responds back with Context "C1" and a TDM side termination "TDM-1".

Request addition of an RTP termination to the "C1" context. Change IMS Through Connection = backward.

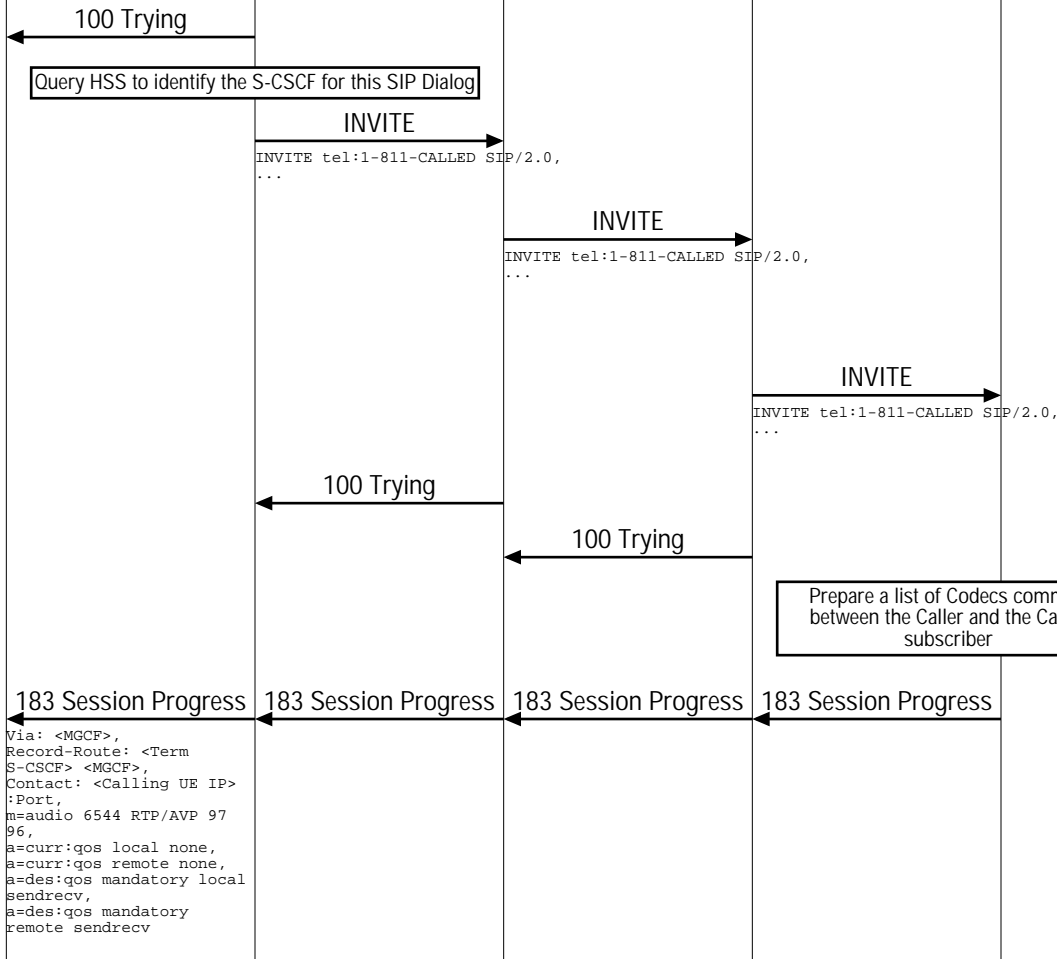
The IM-MGW adds the "RTP-1" termination to the "C1" context. At this point "TDM-1" is a circuit switched termination and "RTP-1" is a RTP based IP termination for communicating with the terminating IMS subscriber.

**Initial Handshake between MGCF and IMS CSCF Servers**



The MGCF initiates an INVITE request, containing an initial SDP, as per the proper S-CSCF to S-CSCF procedure. The INVITE is first sent to the I-CSCF to identify the S-CSCF serving the called user.

PSTN Subscriber to IMS Subscriber Call (PSTN-ISUP Originated Call; IM-MGW Megaco/H.248 Signaling; PSTN Initiated Release)						
PSTN	IMS Core Network				Called UE	EventStudio System Designer 4.0
PSTN Equipment	PSTN Interface	CSCF Servers			Called User Equipment	10-Feb-08 10:59 (Page 2)
IM-MGW	MGCF	I-CSCF	Term S-CSCF	Term P-CSCF	Called	



The I-CSCF acknowledges the INVITE that was received from P-CSCF.  
Query the HSS to obtain the S-CSCF for the user.

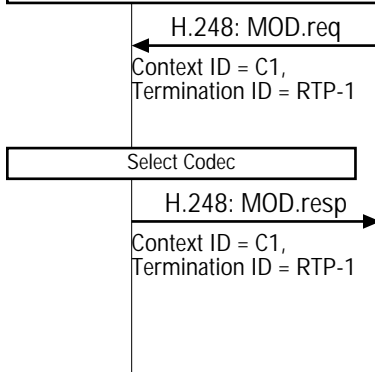
The public URI in the SIP INVITE is replaced with the called subscriber's registered IP address and port number. The message is routed to the P-CSCF IP address that was recorded at the time of registration. The Via and Record-Route headers are updated.  
The P-CSCF updates the Via and Route-Record headers and forwards the request to the Called UE. Note that the secure port is included in the Via address specification.

The Caller examines the SDP list of available codec. It prunes the list by excluding codecs that are not supported by the called subscriber. This list will be included in the 183 message sent to the caller.  
The UE replies indicating that the session is in progress. The contact address is set its own IP address. The Via and the Record-Route headers are copied from the received INVITE.

```

Via: <MGCF>,
Record-Route: <Term
S-CSCF> <MGCF>,
Contact: <Calling UE IP>
:Port,
m=audio 6544 RTP/AVP 97
96,
a=curr:qos local none,
a=curr:qos remote none,
a=des:qos mandatory local
sendrecv,
a=des:qos mandatory
remote sendrecv
  
```

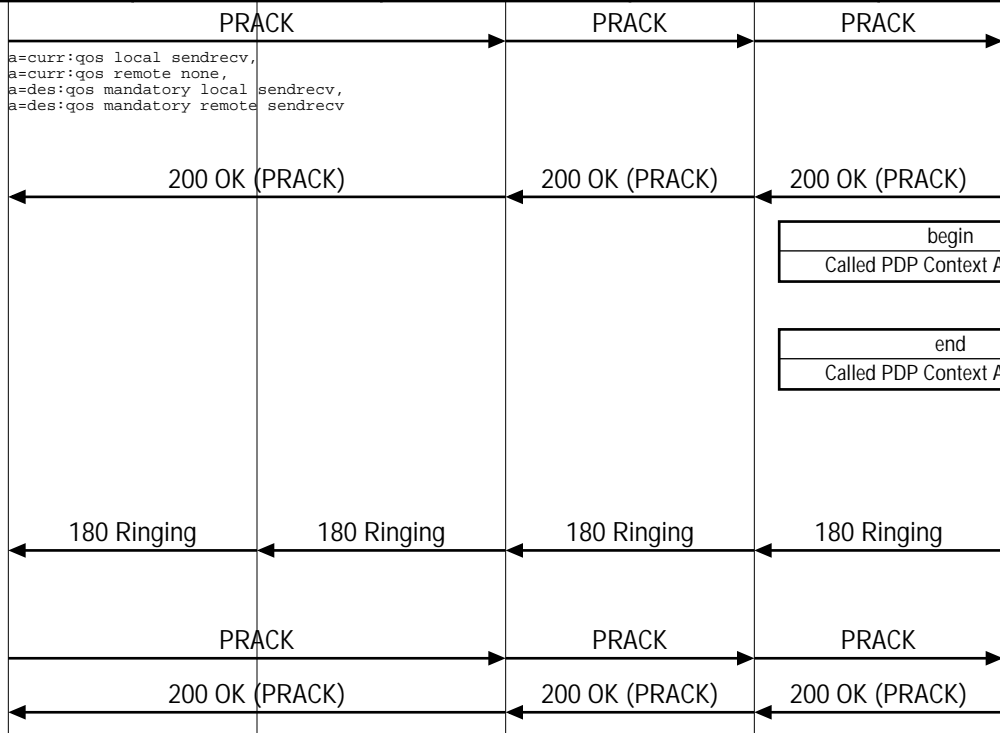
Mn Interactions for Codec selection



The MGCF indicates the remote IP address and UDP port, i.e. the destination IP address and UDP port for RTP messages sent towards the terminating IMS UE. It also identifies the codec to be used in the IM-MGW to Terminating UE RTP communication.

Reply to MGCF. The final codec selection is indicated.

PSTN Subscriber to IMS Subscriber Call (PSTN-ISUP Originated Call; IM-MGW Megaco/H.248 Signaling; PSTN Initiated Release)						
PSTN	IMS Core Network				Called UE	EventStudio System Designer 4.0
PSTN Equipment	PSTN Interface	CSCF Servers			Called User Equipment	
IM-MGW	MGCF	I-CSCF	Term S-CSCF	Term P-CSCF	Called	10-Feb-08 10:59 (Page 3)



The Caller now sends a PRACK to inform the called subscriber about the selected Codec. The message also indicates that currently the resources needed for meeting the quality of service requirements of the session are already available ("a=curr:qos local sendrecv").

This "200 OK" just acknowledges PRACK.

The final codec at the called side is decided. So initiate the PDP context activation to allocate resources for meeting the QoS of the terminating leg of the call.

The called PDP context activation has been completed. At this point, the caller and the called PDP contexts are both active. The QoS for the call can now be met.

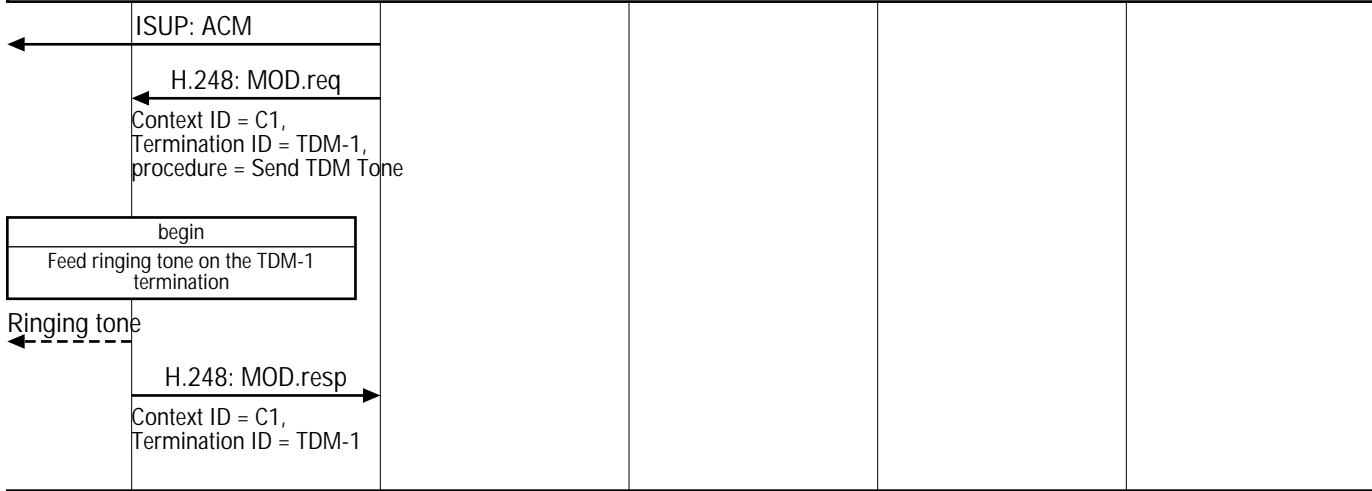
Now all the resources for the call are in place. Ring the called subscriber to notify the user about the incoming call.

Inform the caller that the called subscriber is being rung. This serves as an implicit indication to the caller that the QoS at the called side has also been met.

The caller acknowledges the ringing message.

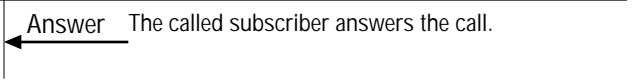
The called subscriber acknowledges the PRACK.

ISUP ACM related interactions on Mn interface.



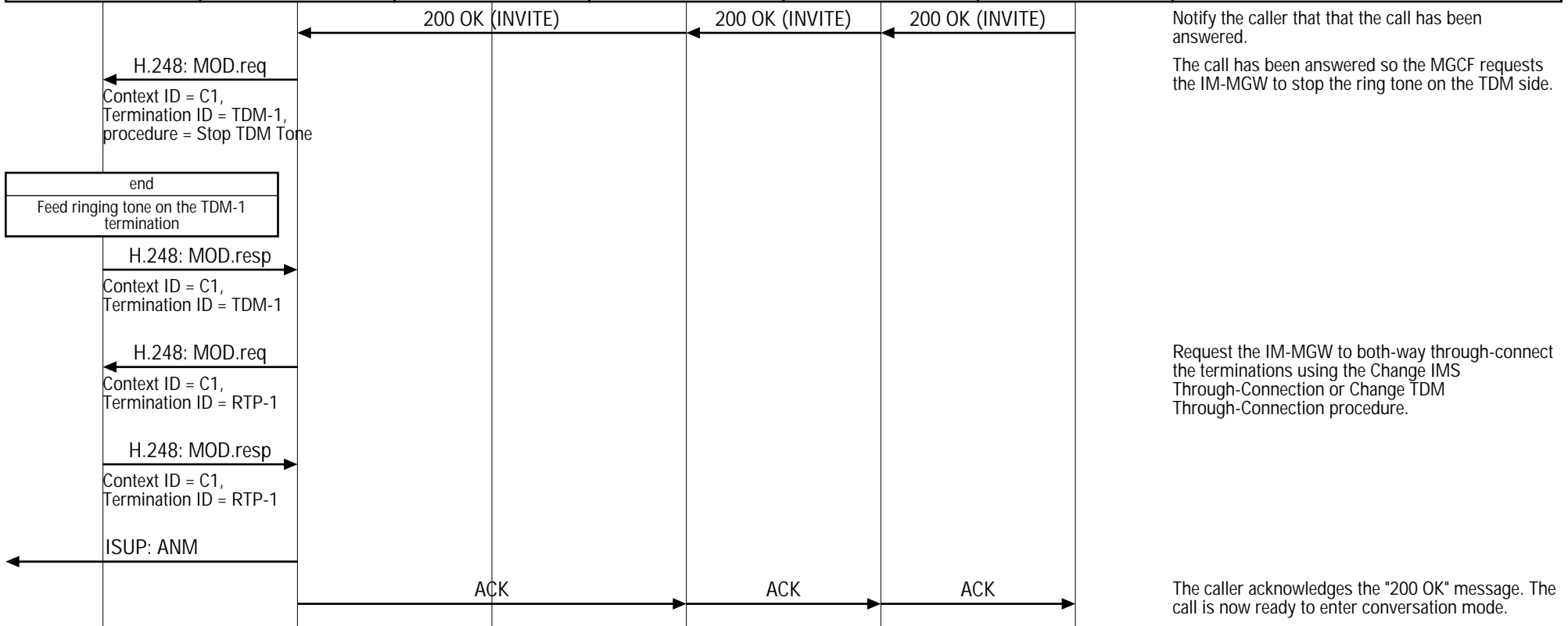
The MGCF requests the IM-MGW to provide a ringing tone to the calling party using the Send TDM Tone procedure.

IMS Answer to ISUP ANM Handling

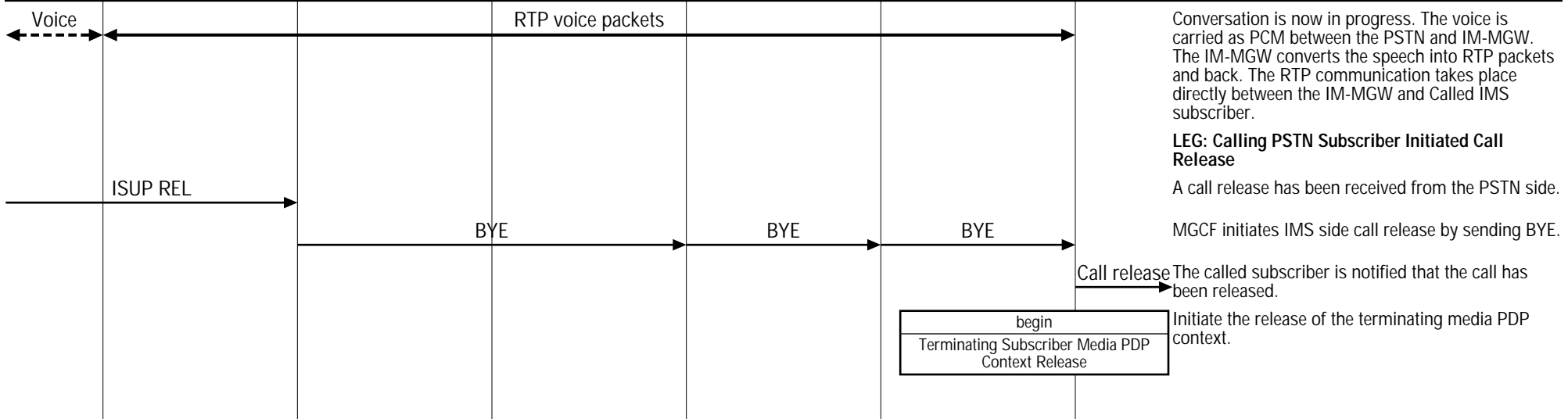


The called subscriber answers the call.

PSTN Subscriber to IMS Subscriber Call (PSTN-ISUP Originated Call; IM-MGW Megaco/H.248 Signaling; PSTN Initiated Release)						
PSTN	IMS Core Network				Called UE	EventStudio System Designer 4.0
PSTN Equipment	PSTN Interface	CSCF Servers			Called User Equipment	
IM-MGW	MGCF	I-CSCF	Term S-CSCF	Term P-CSCF	Called	10-Feb-08 10:59 (Page 4)

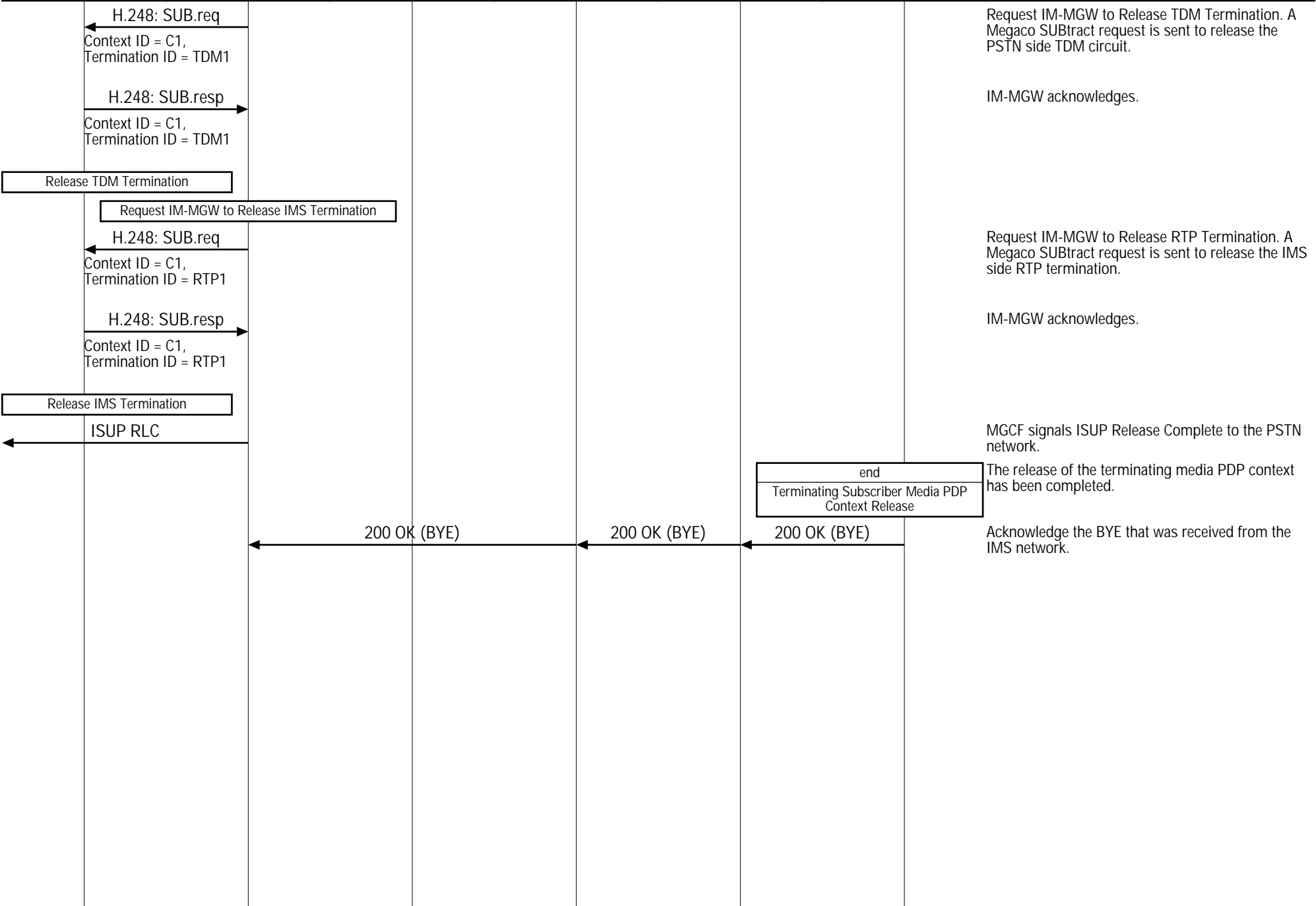


**Conversation Mode**



**PSTN Subscriber to IMS Subscriber Call (PSTN-ISUP Originated Call; IM-MGW Megaco/H.248 Signaling; PSTN Initiated Release)**

PSTN	IMS Core Network				Called UE	EventStudio System Designer 4.0
PSTN Equipment	PSTN Interface	CSCF Servers			Called User Equipment	
IM-MGW	MGCF	I-CSCF	Term S-CSCF	Term P-CSCF	Called	10-Feb-08 10:59 (Page 5)



Request IM-MGW to Release TDM Termination. A Megaco SUBtract request is sent to release the PSTN side TDM circuit.

IM-MGW acknowledges.

Request IM-MGW to Release RTP Termination. A Megaco SUBtract request is sent to release the IMS side RTP termination.

IM-MGW acknowledges.

MGCF signals ISUP Release Complete to the PSTN network.

The release of the terminating media PDP context has been completed.

Acknowledge the BYE that was received from the IMS network.

PSTN Subscriber to IMS Subscriber Call (Called IMS Subscriber Initiated Call Release)						
PSTN	IMS Core Network				Called UE	EventStudio System Designer 4.0 10-Feb-08 10:59 (Page 6)
PSTN Equipment	PSTN Interface	CSCF Servers			Called User Equipment	
IM-MGW	MGCF	I-CSCF	Term S-CSCF	Term P-CSCF	Called	

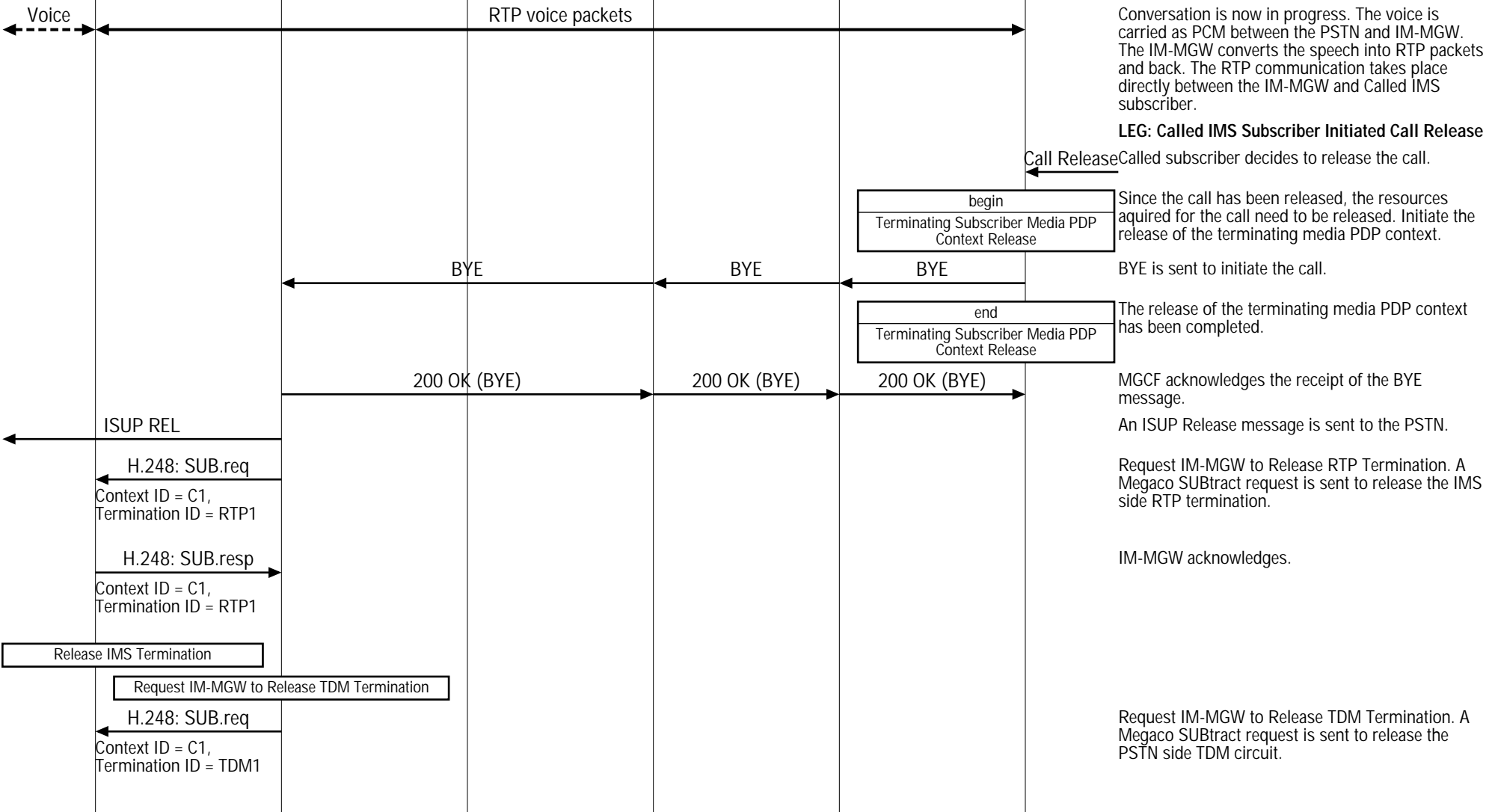
This call flow covers the handling of a CS network originated call with ISUP. In the diagram the MGCF requests seizure of the IM CN subsystem side termination and CS network side bearer termination. When the MGCF receives an answer indication, it requests the IM-MGW to both-way through-connect the terminations.

This sequence diagram was generated with EventStudio System Designer 4.0 (<http://www.EventHelix.com/EventStudio>). Copyright © 2008 EventHelix.com Inc. All Rights Reserved. The EventStudio source files for this document can be downloaded from <http://www.eventhelix.com/call-flow/pstn-ims-call.zip>.

**LEG: Summary PSTN to IMS Call Flow**

Call Setup (Same as Previous Scenario)

Conversation Mode



PSTN Subscriber to IMS Subscriber Call (Called IMS Subscriber Initiated Call Release)						
PSTN	IMS Core Network				Called UE	EventStudio System Designer 4.0
PSTN Equipment	PSTN Interface	CSCF Servers			Called User Equipment	
IM-MGW	MGCF	I-CSCF	Term S-CSCF	Term P-CSCF	Called	10-Feb-08 10:59 (Page 7)

