

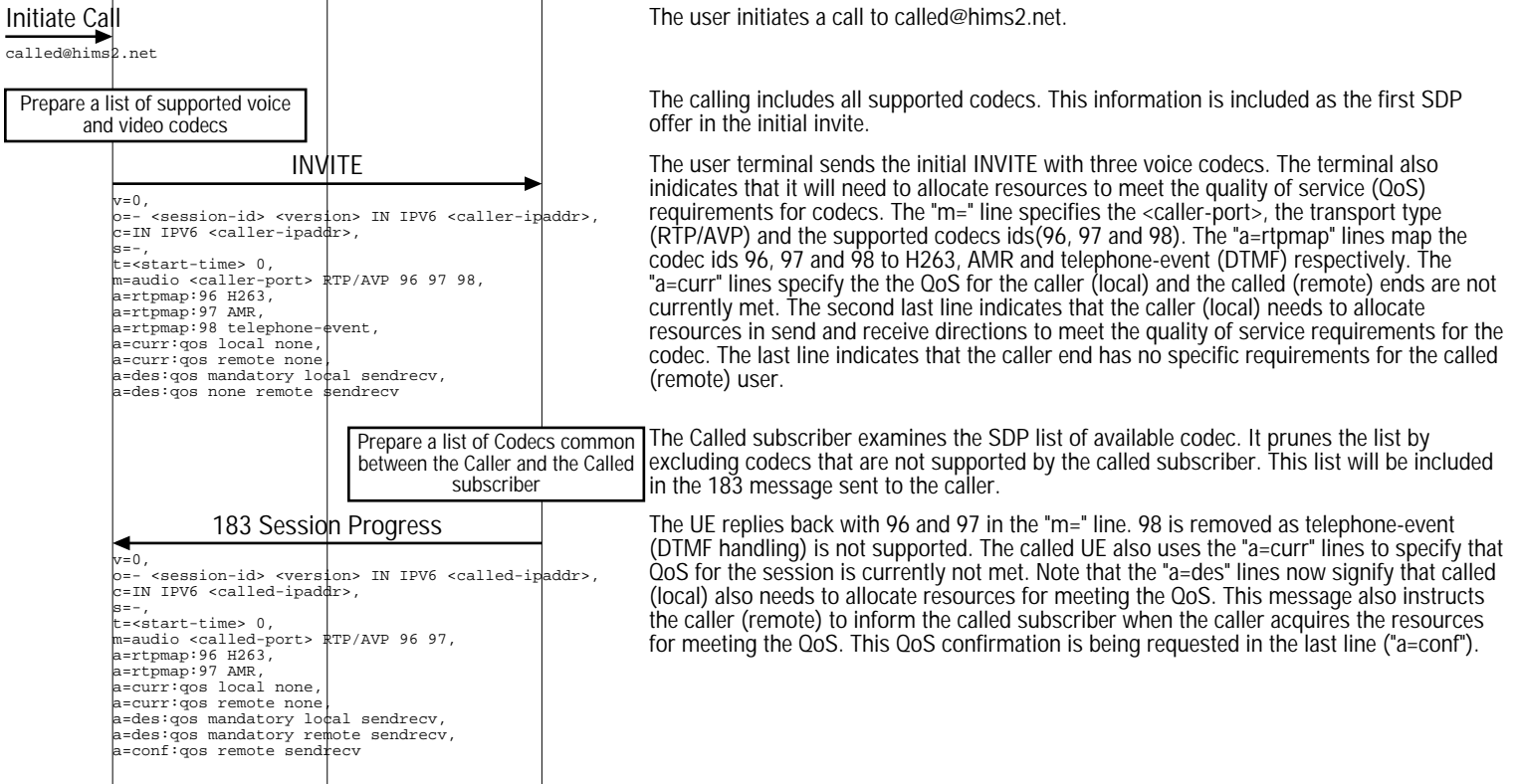
SDP Use in an IMS-to-IMS Call (SDP Codec Selection and QoS Signaling)			
Calling UE	Core Network	Called UE	EventStudio System Designer 4.0
Caller User Equipment	GGSN	Called User Equipment	
Caller	GGSN	Called	07-Dec-07 22:30 (Page 1)

Session Description Protocol (SDP) specifies a format for exchanging streaming related parameters between SIP subscribers. The following sequence diagram focuses on the SDP interactions between two IMS subscribers. The flow covers two phases of the SDP negotiation:

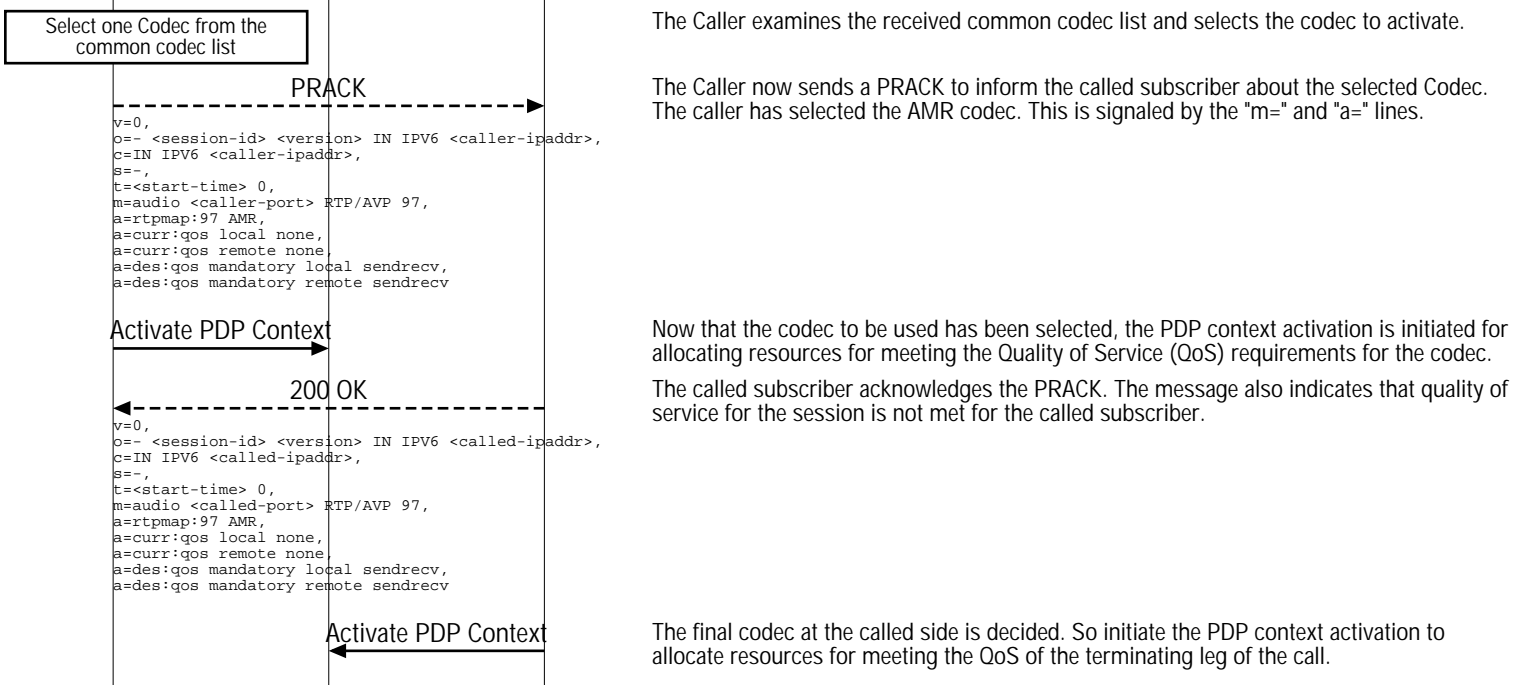
- (1) Codec selection between the calling and call IMS subscribers.
- (2) SDP signaling involved in exchanging quality of service information.

This sequence diagram was generated with EventStudio System Designer 4.0 (<http://www.EventHelix.com/EventStudio>). Copyright © 2007 EventHelix.com Inc. All Rights Reserved.

### Codec Selection

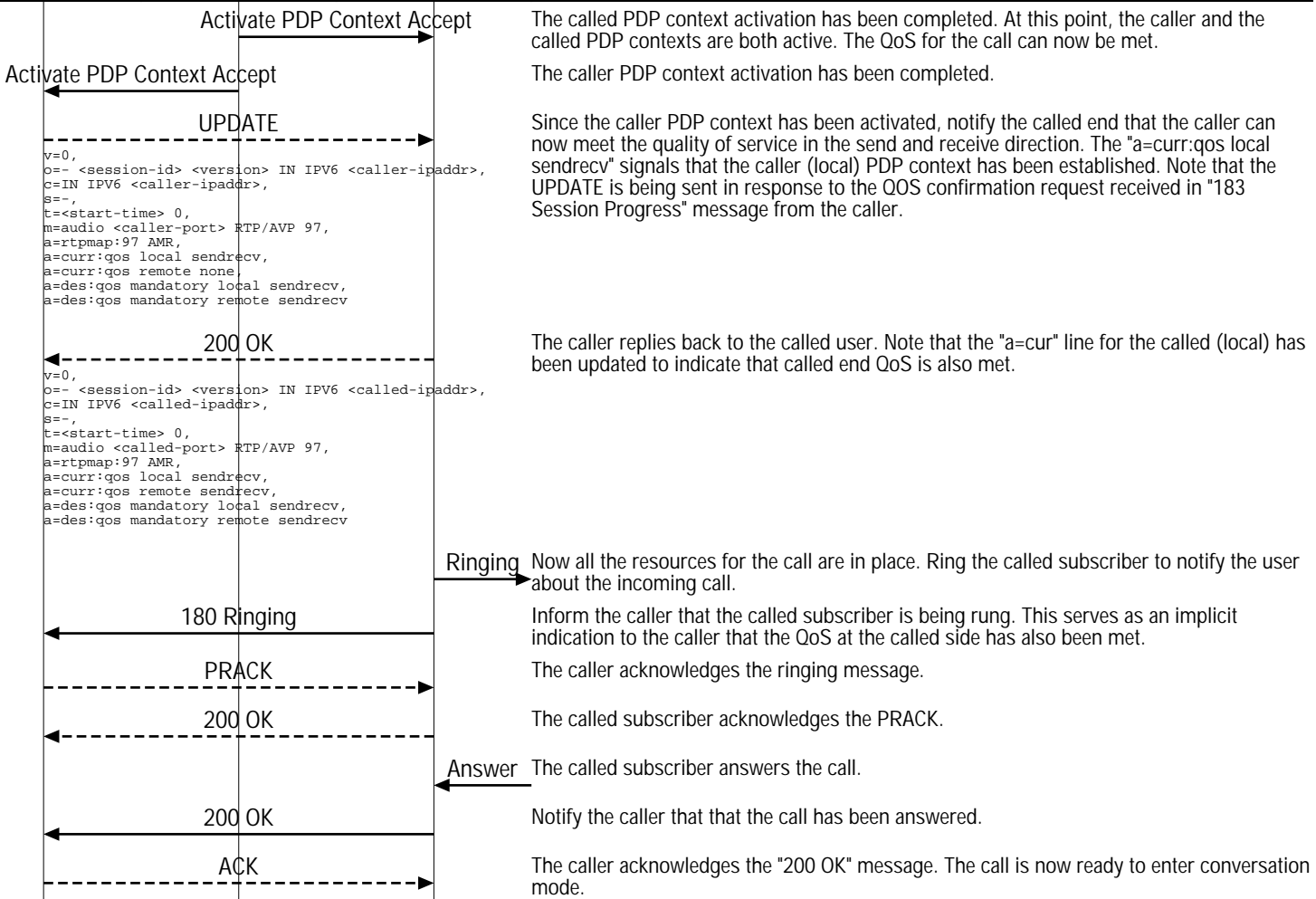


### PDP Context Activation QoS Signaling



**SDP Use in an IMS-to-IMS Call (SDP Codec Selection and QoS Signaling)**

Calling UE	Core Network	Called UE	EventStudio System Designer 4.0
Caller User Equipment	GGSN	Called User Equipment	
Caller	GGSN	Called	07-Dec-07 22:30 (Page 2)



Conversation on a direct RTP/RTCP connection between the caller and called subscriber SIP phones.