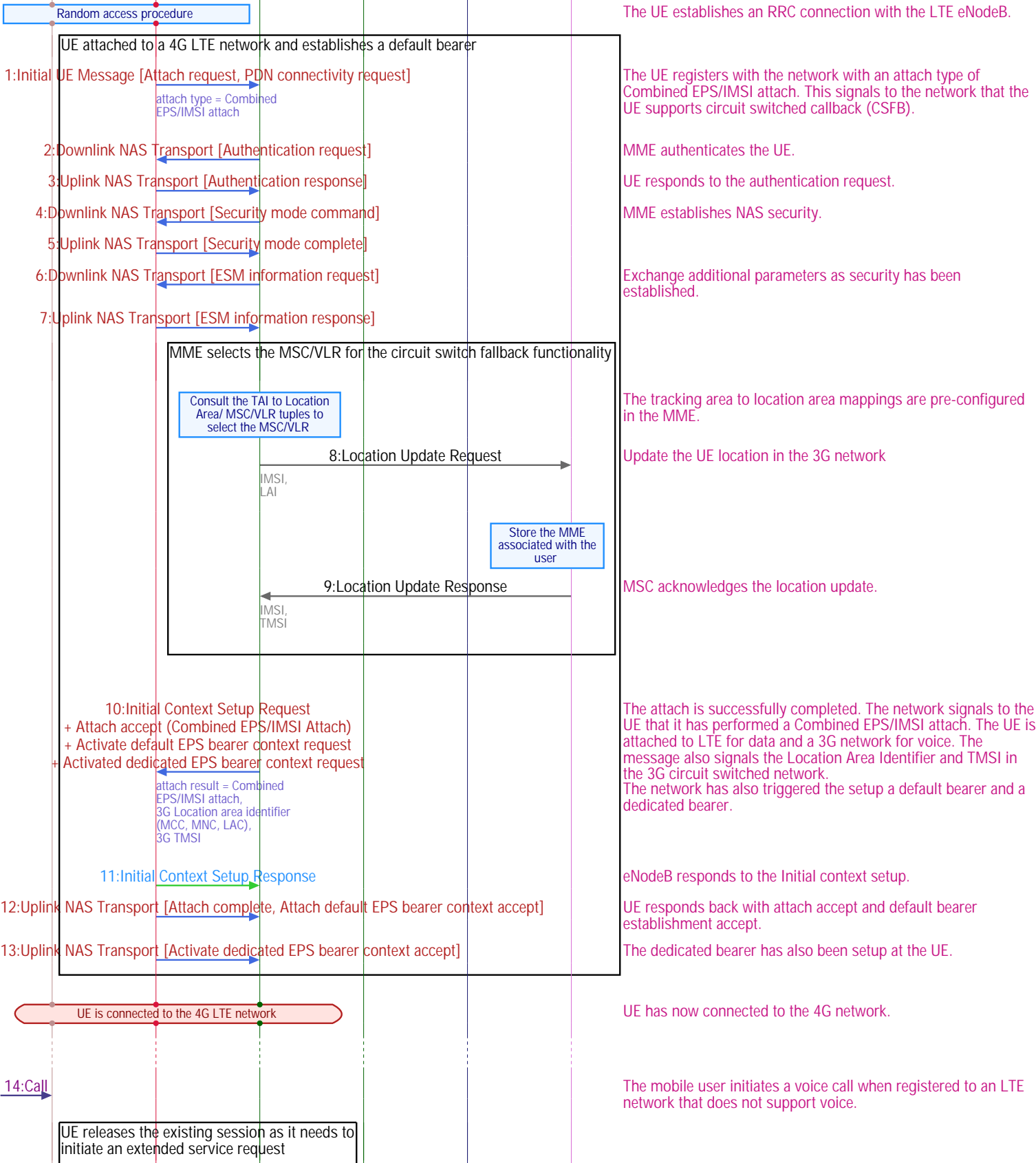
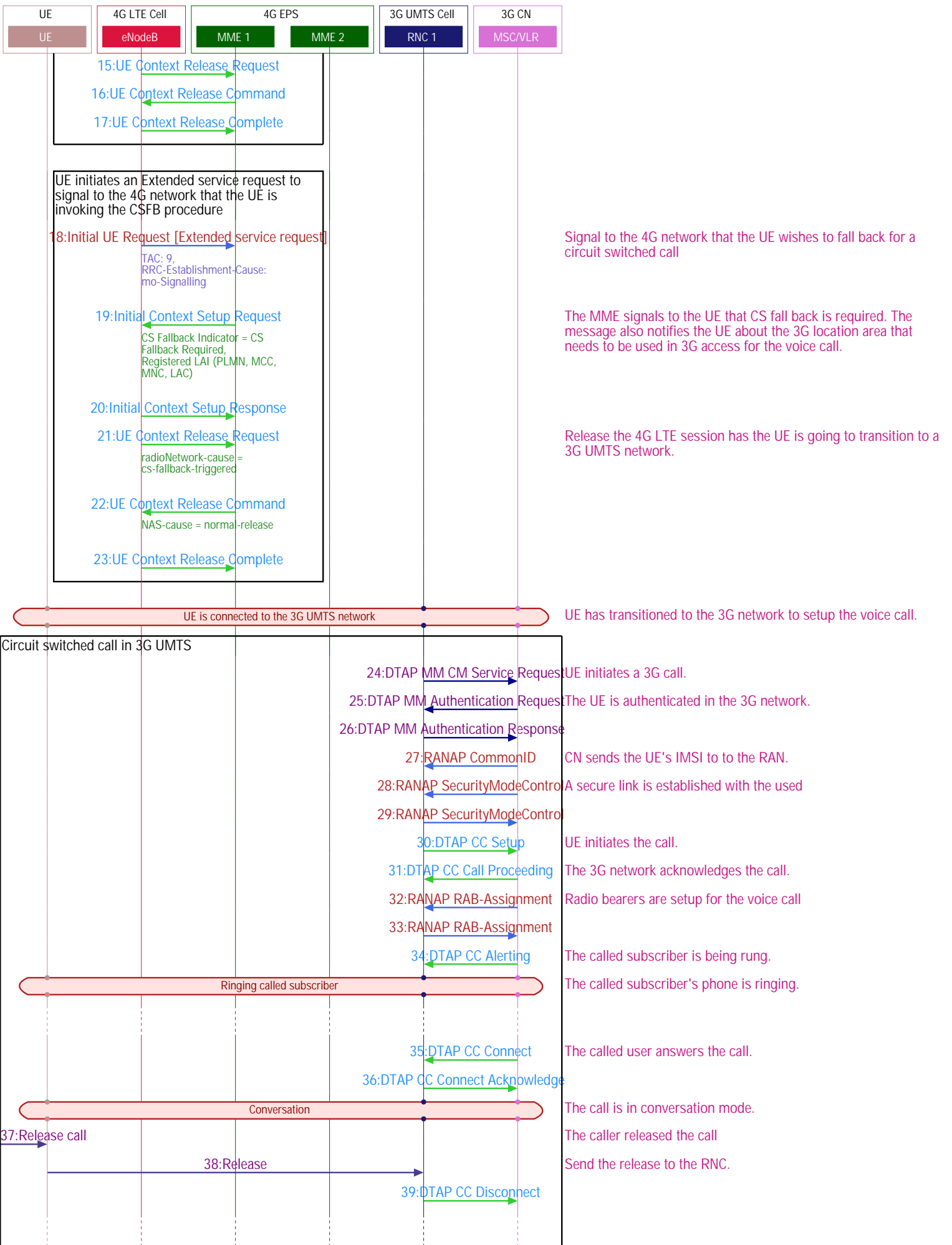


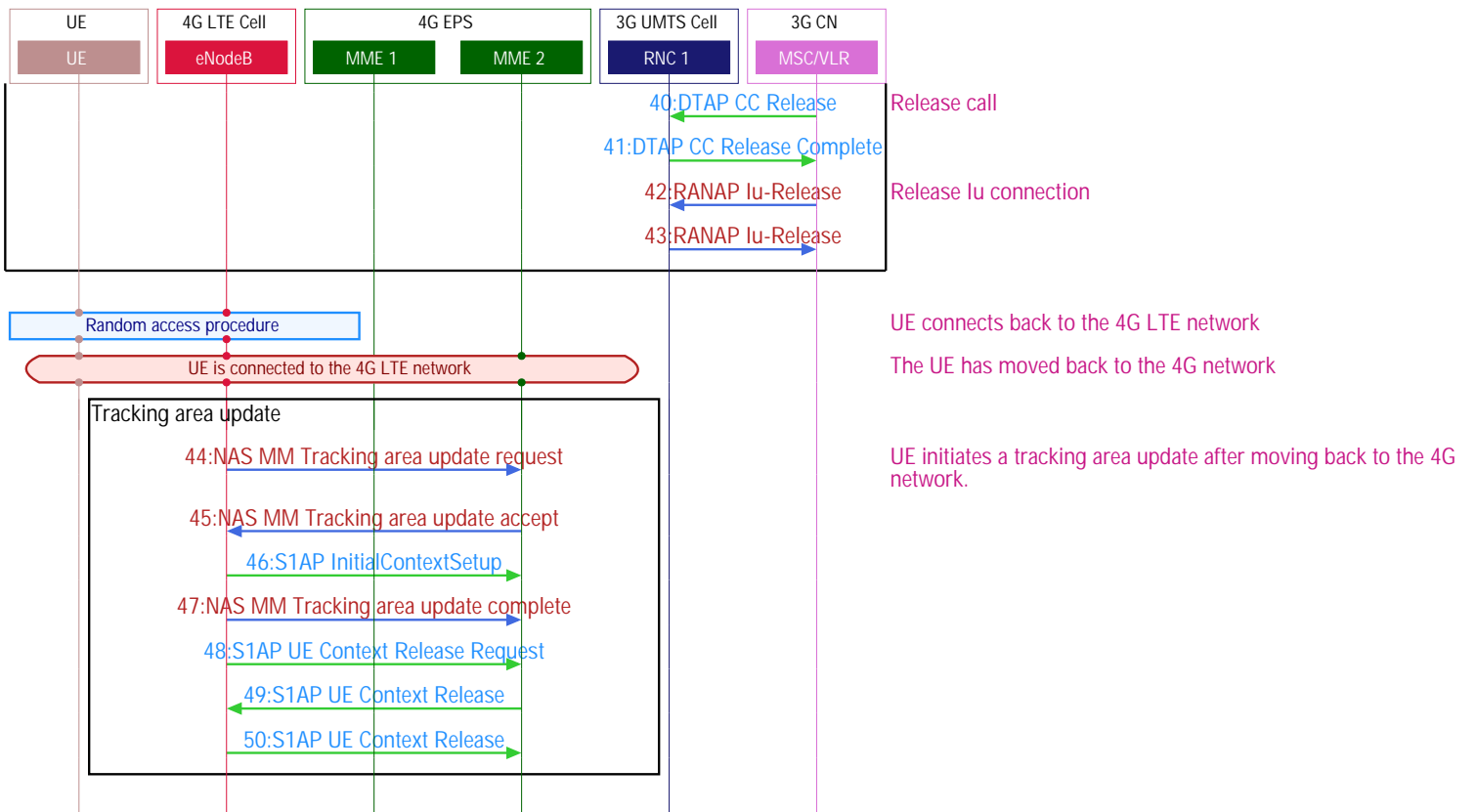
LTE to 3G circuit switched fallback (CSFB) call

Many LTE deployments do not support VoLTE. In such networks, the mobile phones fall back to 2G or 3G networks that support circuit switch calls. This flow describes circuit switched fall back (CSFB) from LTE to 3G UMTS.

You can also click on the message titles to see the complete structure of the messages.







EXPLORE MORE

LTE - <https://www.eventhelix.com/lte/>

Telecom Call Flows - <https://www.eventhelix.com/RealtimeMantra/Telecom/>

Networking Sequence Diagrams - <https://www.eventhelix.com/RealtimeMantra/Networking/>

Sequence diagram generated from Wireshark PCAP file with:
 VisualEther [<https://www.eventhelix.com/VisualEther/>] and EventStudio [<https://www.eventhelix.com/EventStudio/>].