

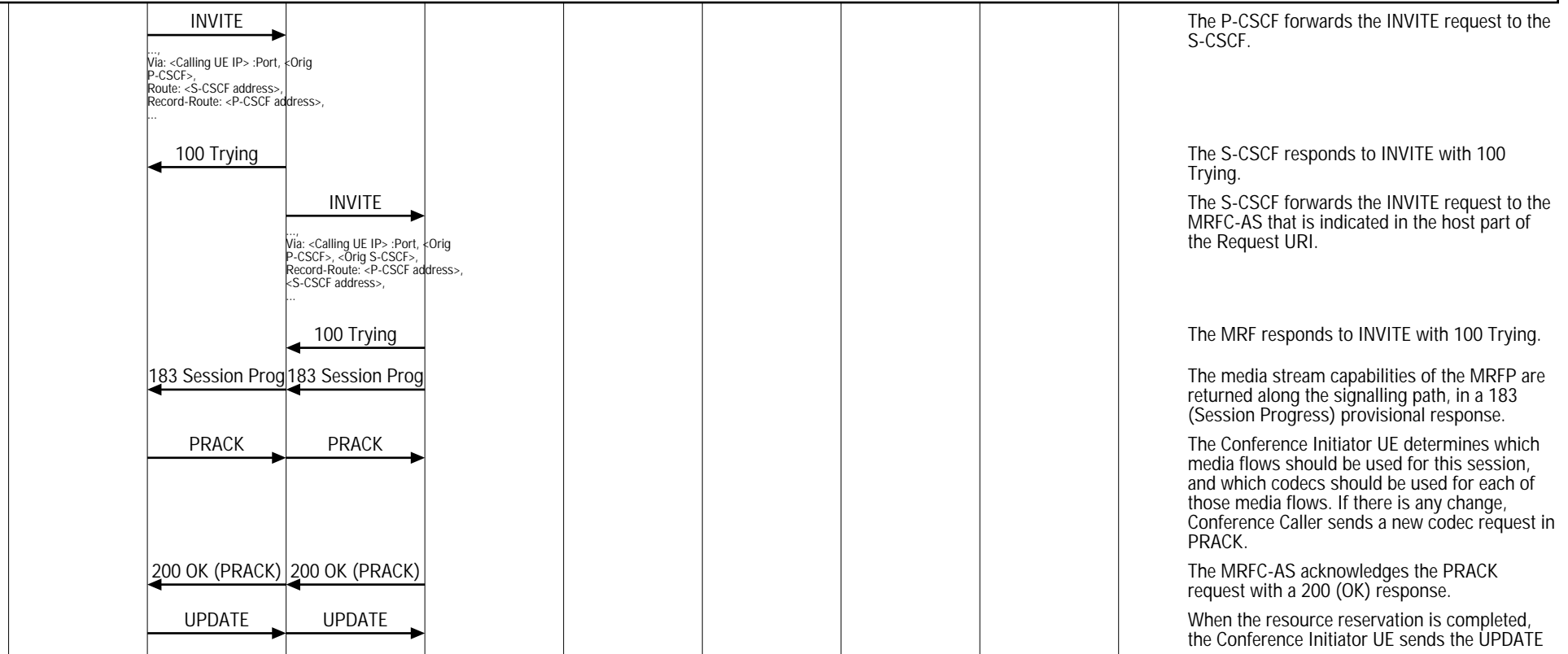
Initiating S-CSCF Interfaces (IMS Conference Call)									
Calling UE	IMS Network							Called UE	EventStudio System Designer 4.0
Caller User Equipment	IMS 1		IMS 1 MRF		IMS 2			Called User Equipment	
Conference Initiator	Initiating P-CSCF	Initiating S-CSCF	MRFC-AS	MRFP	Participating I-CSCF	Participating S-CSCF	Participating P-CSCF	Conference Participant	

This sequence diagram was generated with EventStudio System Designer 4.0 (<http://www.EventHelix.com/EventStudio>). Copyright © 2008 EventHelix.com Inc. All Rights Reserved. The EventStudio source files for this document can be downloaded from <http://www.eventhelix.com/call-flow/ims-conference.zip>.

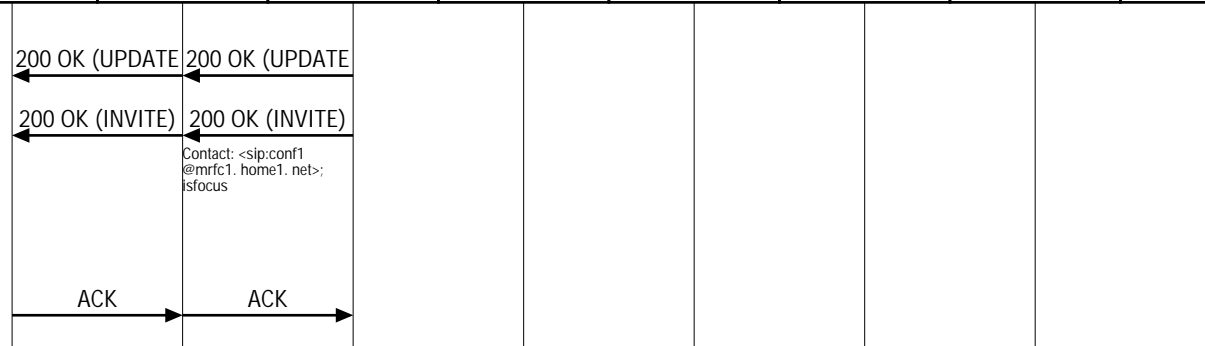
This sequence diagram shows an IMS user creating a conference by using a conference-factory URI. The conference is created at a MRFC-AS of the users home network. The steps involved in the conference scenario covered here are:

- (1) The conference initiator UE uses the conference factory URI to initiate a conference with the MRFC-AS (Multimedia Resource Function Control/Application Server).
- (2) The MRFC-AS assigns a conference URI to the conference and configures the MRFP (Multimedia Resource Function Processor).
- (3) The conference call is setup and the RTP data begins flowing between the conference initiating UE and the MRFP.
- (4) The conference initiator then uses the refer procedure to add more users to the conference. The new users establish a call to the conference URI passed in the refer message.
- (5) When the conference is in progress, RTP media streams are being mixed and propagated to all the participants.
- (6) The conference user drops out of the conference. All users are notified for this exit from the conference.

Initiating an IMS conference using the Conference Factory URI



Initiating S-CSCF Interfaces (IMS Conference Call)									
Calling UE	IMS Network							Called UE	EventStudio System Designer 4.0 18-May-08 10:40 (Page 2)
Caller User Equipment	IMS 1		IMS 1 MRF		IMS 2			Called User Equipment	
Conference Initiator	Initiating P-CSCF	Initiating S-CSCF	MRFC-AS	MRFP	Participating I-CSCF	Participating S-CSCF	Participating P-CSCF	Conference Participant	



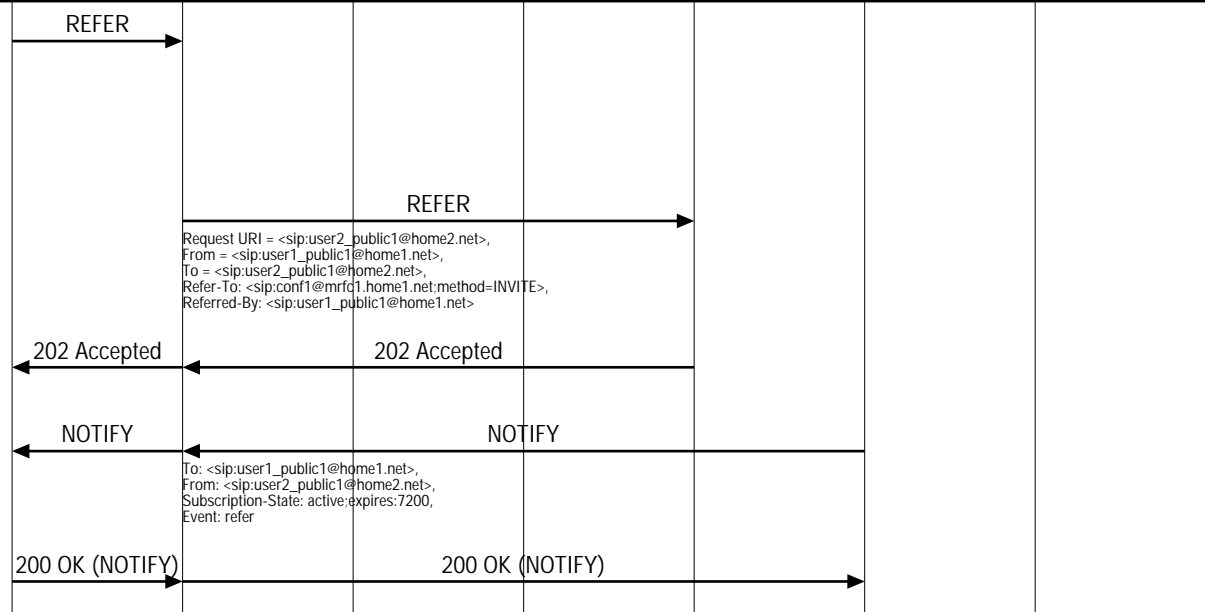
request towards the MRFC-AS

The MRFC-AS acknowledges the UPDATE with a 200 (OK) response.

The MRFC-AS sends "200 OK" as a final response to INVITE request. MRFC creates a focus for the newly created conference, assigns it conference URI and returns it in Contact header. On receiving 200 (OK) with isfocus parameter, the Conference initiator stores the Contact header content as the conference URI.

The conference initiator responds to the "200 OK" with an ACK towards MRFC-AS.

User inviting another user to a conference by sending a REFER request



Conference Caller creates a conference and then sends REFER message with Refer-To containing the conference URI as learned during the conference establishment. Additionally the "method" uri parameter indicates that the other user is requested to send an INVITE request to this conference URI.

The originating S-CSCF performs an analysis of the destination address, determines the terminating I-CSCF and forwards the REFER message to it.

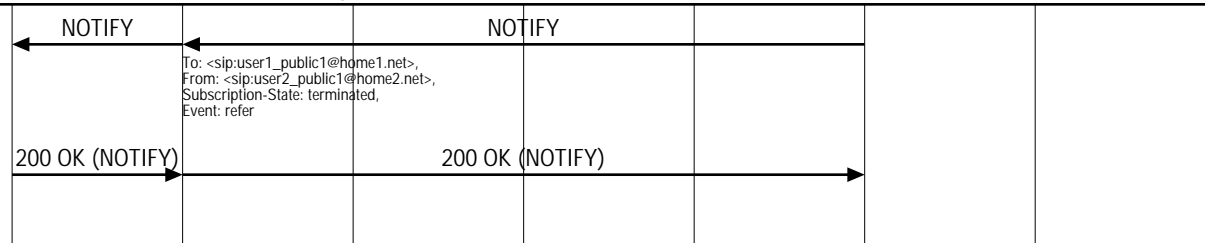
The Called Conference Participant accepts the REFER request by sending a 202 (Accepted) response.

The NOTIFY message is sent to inform that the REFER message is being processed.

The "200 OK" Acknowledges the NOTIFY message.

Called Conference Participant enters Conference

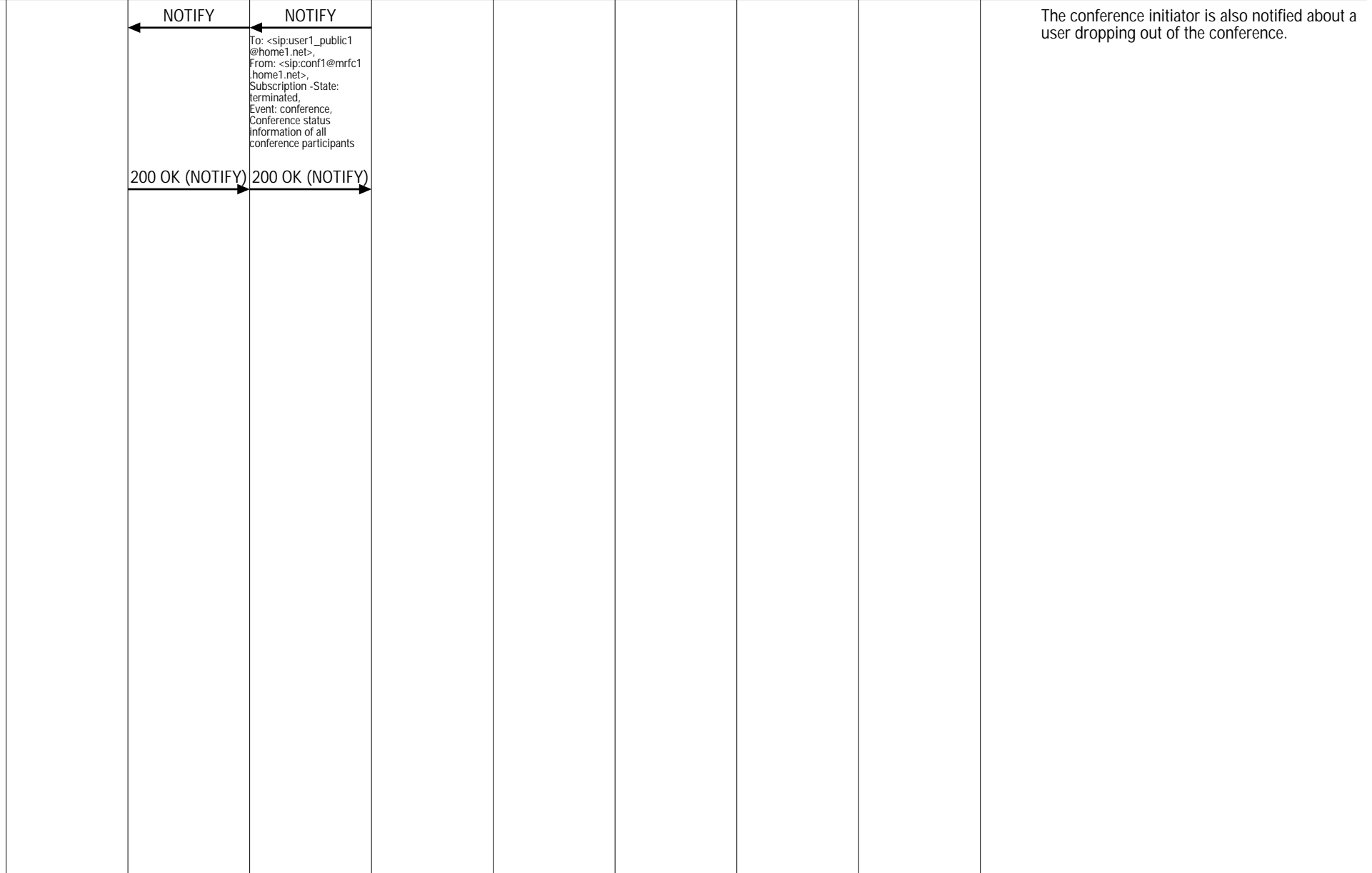
Notify Conference Initiator that the user has successfully entered the conference



Initiating S-CSCF Interfaces (IMS Conference Call)									
Calling UE	IMS Network							Called UE	EventStudio System Designer 4.0
Caller User Equipment	IMS 1		IMS 1 MRF		IMS 2			Called User Equipment	
Conference Initiator	Initiating P-CSCF	Initiating S-CSCF	MRFC-AS	MRFP	Participating I-CSCF	Participating S-CSCF	Participating P-CSCF	Conference Participant	18-May-08 10:40 (Page 3)

Conference in progress

Conference Caller leaving the Conference



The conference initiator is also notified about a user dropping out of the conference.