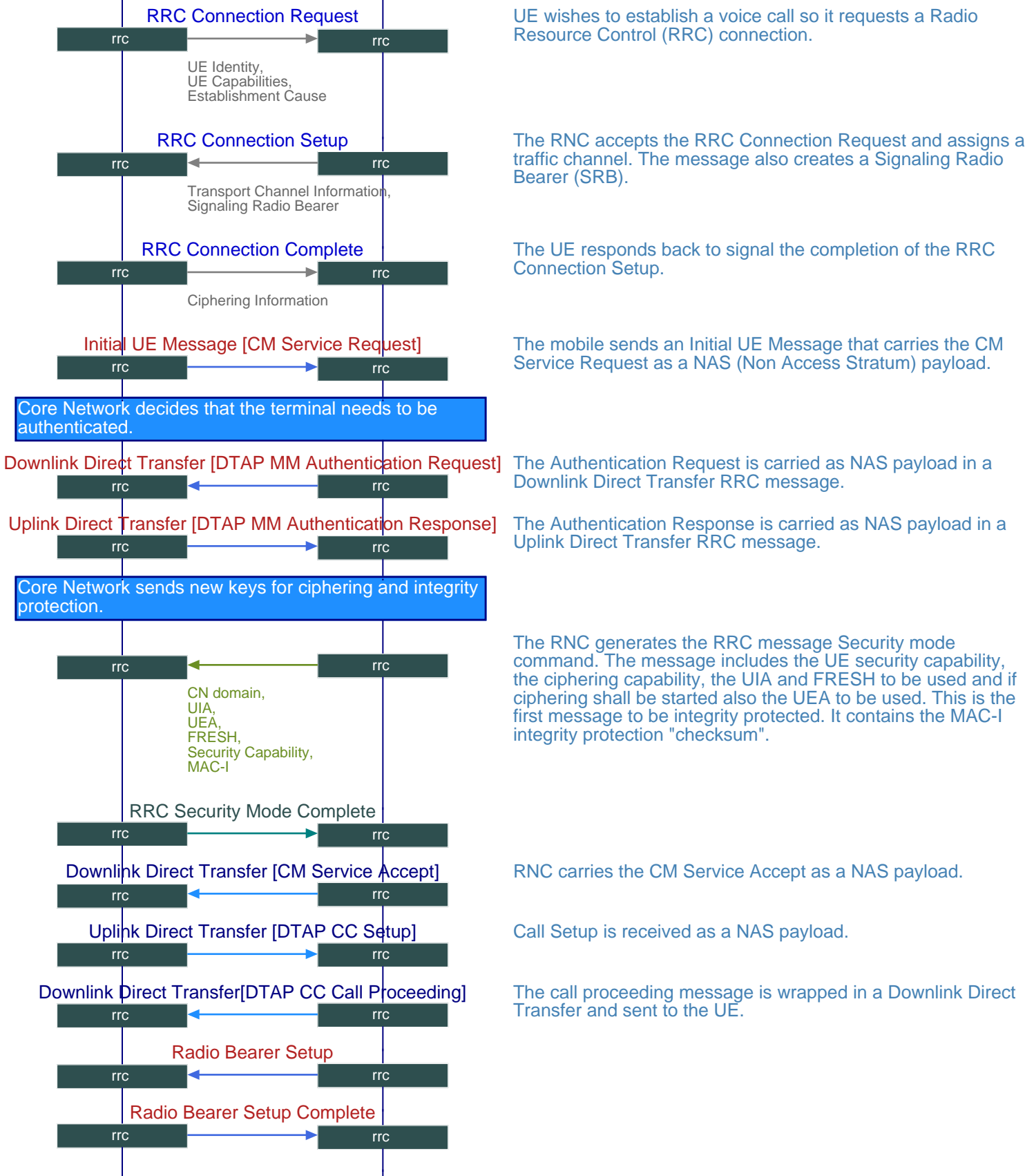


-rrc Interfaces (Originating Call)		
User Equipment	UTRAN	EventStudio System Designer 6
UE	RNC	06-Oct-13 07:42 (Page 1)

A 3G-UMTS originating call is described here. Setup radio bearers and RANAP signaling are covered in detail. You can click on most RANAP messages to see the full content of the message.

This call flow has been generated with from a Wireshark PCAP file using VisualEther (<http://www.eventhelix.com/VisualEther/>). The generated call flow was later modified with EventStudio (<http://www.eventhelix.com/EventStudio/>) to add comments and terminal level interactions.



UE wishes to establish a voice call so it requests a Radio Resource Control (RRC) connection.

The RNC accepts the RRC Connection Request and assigns a traffic channel. The message also creates a Signaling Radio Bearer (SRB).

The UE responds back to signal the completion of the RRC Connection Setup.

The mobile sends an Initial UE Message that carries the CM Service Request as a NAS (Non Access Stratum) payload.

Core Network decides that the terminal needs to be authenticated.

Downlink Direct Transfer [DTAP MM Authentication Request]

The Authentication Request is carried as NAS payload in a Downlink Direct Transfer RRC message.

Uplink Direct Transfer [DTAP MM Authentication Response]

The Authentication Response is carried as NAS payload in a Uplink Direct Transfer RRC message.

Core Network sends new keys for ciphering and integrity protection.

The RNC generates the RRC message Security mode command. The message includes the UE security capability, the ciphering capability, the UIA and FRESH to be used and if ciphering shall be started also the UEA to be used. This is the first message to be integrity protected. It contains the MAC-I integrity protection "checksum".

RRC Security Mode Complete

RNC carries the CM Service Accept as a NAS payload.

Downlink Direct Transfer [CM Service Accept]

Call Setup is received as a NAS payload.

Uplink Direct Transfer [DTAP CC Setup]

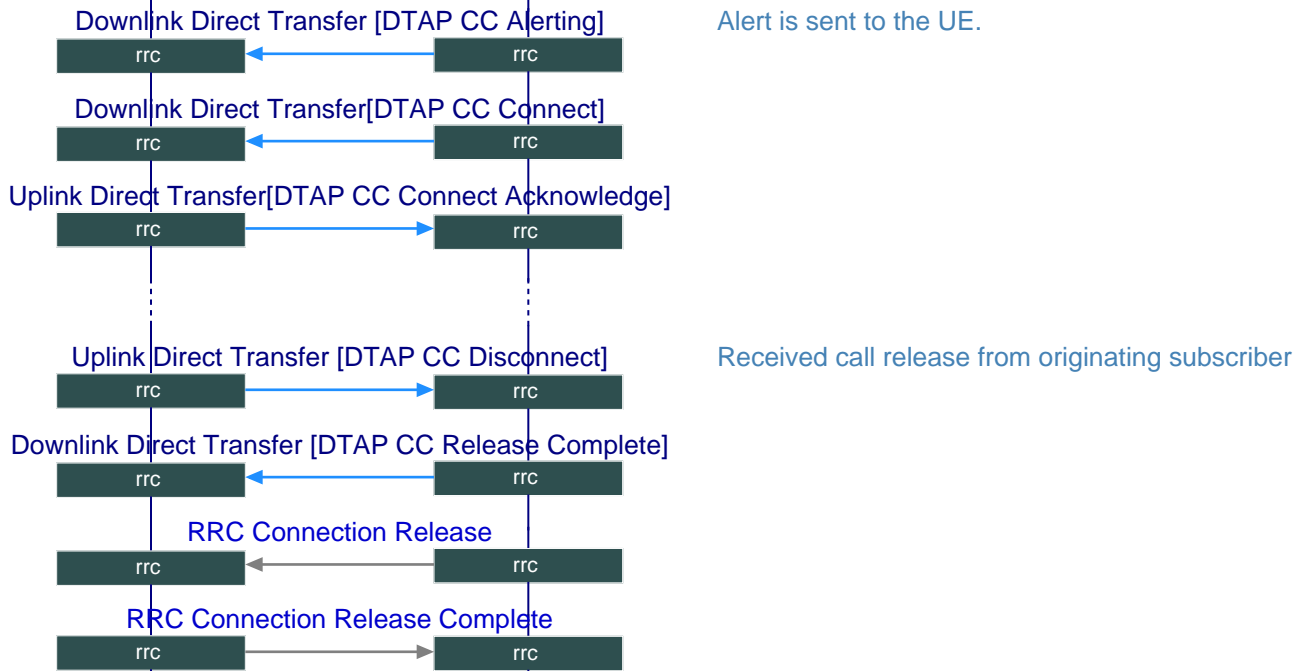
Downlink Direct Transfer [DTAP CC Call Proceeding]

The call proceeding message is wrapped in a Downlink Direct Transfer and sent to the UE.

Radio Bearer Setup

Radio Bearer Setup Complete

-rrc Interfaces (Originating Call)		
User Equipment	UTRAN	EventStudio System Designer 6
UE	RNC	06-Oct-13 07:42 (Page 2)



This call flow has been generated with from a Wireshark PCAP file using VisualEther (<http://www.eventhelix.com/VisualEther/>). The generated call flow was later modified with EventStudio (<http://www.eventhelix.com/EventStudio/>) to add comments and terminal level interactions.

Explore more call flow diagrams at: <http://www.eventhelix.com/realtimemantra/telecom/>